

# 麥寮工業專用港

## 統計要覽

### STATISTICAL ABSTRACT OF MAILIAO HARBOR

中華民國114年 2025(每年一期)

經濟部產業園區管理局編印

Complied By

Bureau of Industrial Parks  
Ministry of Economic Affairs,  
Republic of China (Taiwan)

115年03月出版

# 目 錄

## Contents

頁次(page)

第一篇	基本概況 Basic Overview .....	1
第二篇	提要分析 Summary Analysis .....	3
第三篇	統計表 Statistics Tables	
一、港務 Harbor Management		
(一)船舶 Vessels		
附表 1	進出港輪船地區 .....	22
	Incoming and Outgoing Vessels by Area	
附表 2	進港輪船國籍 .....	24
	Number of Incoming Vessels by Registered Nationality	
附表 3	進港輪船種類 .....	26
	Number of Incoming Vessels by Kind	
附表 4	進港輪船航次 .....	28
	Number of Incoming Vessels by Line of Navigation	
附表 5	出港輪船航次 .....	30
	Number of Outgoing Vessels by Line of Navigation	
附表 6	進港輪船噸級與在港停泊時間 .....	32
	Number of Incoming Vessels by Gross Tonnage and Time of Vessels Mooring in Port	
(二)貨物 Cargoes		
附表 7	進出港貨物國輪外輪承運量 .....	34
	Tonnage of Imports & Exports Carried by Domestic and Foreign Vessels	
附表 8	進港貨物(地區別) .....	36
	Tonnage of Imports (by Region)	

# 目 錄

## Contents

	頁次(page)
附表 9 出港貨物(地區別).....	38
Tonnage of Exports (by Region)	
附表 10 進港貨物分類(按月).....	40
Classification of Imports (by Month)	
附表 11 進港貨物分類(按碼頭).....	44
Classification of Imports (by Wharf)	
附表 12 出港貨物分類(按月).....	48
Classification of Exports (by Month)	
附表 13 出港貨物分類(按碼頭).....	52
Classification of Exports (by Wharf)	
二、棧埠 Stevedoring & Warehousing	
附表 14 本港裝卸業者營運實績(依公司別).....	54
Volume of Cargoes Handled by Stevedoring & Warehousing Companies	
附表 15 裝卸貨物噸量.....	56
Volume of Cargoes Handled	
附表 16 裝卸貨物效率.....	58
Efficiency of Cargoes Handled	
附表 17 貨櫃裝卸量.....	60
Number of Containers Handled	
附表 18 倉儲業務概況.....	64
Volume of Warehousing	
三、航政監理 Supervising and Administering of navigation	
附表 19 工業專用港區域海事案件 Ship-Wreck...	66

# 目 錄

## Contents

頁次(page)

四、財務 Finance	
附表 20 營業總收入 Total Operating Revenue...	68
附表 21 營業總支出 Total Operating Expense...	70
五、組織及人事 Organization and Personnel matters	
附表 22 港內各作業組織系統表.....	72
Organization Chart	
附表 23 港內作業人數(依組織別).....	74
Number of Staff & Workmen of the Bureau and Branch Offices	
附表 24 港內作業人員學歷(依組織別).....	76
Number of Staff by Education	
附表 25 港內作業人員年齡(依組織別).....	78
Number of Staff by Age	
六、港埠設施 Harbor Facilities	
附表 26 機具、車、船(依組織別).....	80
Mechanical, Vehicular & Marine Equipment	
附表 27 港埠工程.....	84
Harbor Construction	

# 第一篇 基本概況

## 一、港埠基本資料

經濟部為因應我國基礎工業之發展，配合六輕及六輕擴大投資計畫用地需求，以提供國內既有及未來石化產業建廠及遷廠需要，乃規劃於雲林縣外海以抽砂填海造地方式開發雲林離島式基礎工業區，共分有麥寮區、新興區、台西區及四湖區，其中麥寮區之六輕計畫石化工業區係由台塑企業自行進行抽砂填海造地，而麥寮工業專用港（以下簡稱麥寮港）內之專用碼頭，則全為配合六輕計畫所興建。

麥寮港為我國由民營事業投資興建及經營管理港口之首例，其港埠經營完全由台塑企業成立之麥寮工業區專用港管理股份有限公司（以下簡稱港口公司）負責，原經濟部工業局於 89 年 10 月 1 日現地派駐成立麥寮工業專用港管理小組（以下簡稱管理小組），以最精簡人力有效扮演監督，執行具有公權力之港務行政管理及協調航政、海關、港警、檢疫及安檢等其他相關公務機關，順利於 90 年 2 月 22 日邀集交通部、財政部、內政部、國防部、海巡署、環保署、農委會及雲林縣政府等各機關現地履勘合格後，於 90 年 3 月 1 日起開始正式營運。

麥寮港位於東經 120 度 08.9 分、北緯 23 度 46.9 分。北起濁水溪口南側，南臨新虎尾溪口，澎湖水道東側海岸。北距台中港約 40 浬，南離高雄港約 80 浬。港口方向朝西偏南 34°（約介於西南西與西南間），航道水深-24 公尺，可供 30 萬噸級(DWT)油輪進出，為台灣最深之港口。

## 二、港灣及碼頭

### (一)港灣設施

- (1)防波堤：西防波堤長 3,243 公尺，南防波堤長 2,227 公尺。
- (2)迴船池：直徑 900 公尺。
- (3)港外水域：劃設領港登輪區、外航道及到港船舶錨泊區。
- (4)導航設施：進港疊標及堤頭燈塔等，用以引導及協助船舶之安全航行。
- (5)信號台設施：船舶交通管理系統(VTS)、海氣象設施及 DSB 通信設備等，用以管制船舶航行與進出港。
- (6)港勤船渠：供港勤船舶靠泊、加油及加水等使用。
- (7)港務港勤大樓：提供政府單位、港區作業單位、港口公司及信號台辦公或作業所需。
- (8)機工場及滑道：供港勤船舶維修、檢驗及保養所需。

### (二)碼頭設施

營運中 20 座專用碼頭分別由台塑石化公司及麥寮汽電公司自行投資興建及維護管理。

## 三、設備概況

### (一)港勤船舶

由港口公司購置拖船 9 艘、交通船 1 艘及什用船 1 艘，用以協助船舶進出港口及靠泊碼頭所需。

### (二)裝卸設備

各碼頭依裝卸需求由裝卸作業單位購置裝卸機具，諸如卸料臂及卸煤機等，以提供裝卸服務。

## 第二篇 提要分析

### 一、營運實績

#### (一)進出港船舶

(1)進港船舶：114年1月至12月進港船舶合計1,842艘次，4,685萬8,844總噸位，較113年減少10艘次，減少率為0.54%，總噸位增加62萬5,477總噸位，增加率為1.35%，若與90年比較，則增加471艘次及增加2,493萬8,141總噸位，增加率分別為34.35%與113.77%。

(2)出港船舶：114年1月至12月出港船舶合計1,843艘次，4,694萬5,636總噸位，較113年減少13艘次，減少率為0.70%，總噸位增加53萬6,891總噸位，增加率為1.16%，若與90年比較，則增加469艘次及增加2,498萬2,470總噸位，增加率分別為34.21%與113.75%。

(二)貨物吞吐量：114年全年進港貨物為4,187萬823公噸、出港貨物為1,928萬4,279公噸，吞吐量為6,115萬5,102公噸，較上年增加180萬5,045公噸，增加率為3.04%。若與90年比較，則增加3,483萬5,056公噸，增加率為132.35%。

(三)貨物裝卸量：114年1月至12月全港裝卸量合計為6,061萬2,213公噸，較上年增加99萬3,509公噸，增加率為1.67%。若與90年比較，則增加3,457萬785公噸，增加率為132.75%；另114年區內貨主以台塑石化公司5,009萬1,822公噸為最多，占82.64%，其次為台塑公司379萬5,372公噸，占6.26%，再次為麥電公司283萬5,731公噸，占4.68%。

(四)謹刊列臺灣地區各港口114年營運量比較表（如表1），以供參考。

## 二、港務統計資料

114 年度進出港船舶及貨物，依各類統計條件說明如次：

### (一) 船舶

- (1) 進港船舶國籍：以巴拿馬 332 艘次為最多，其次為南韓 199 艘次，再次為賴比瑞亞 187 艘次。
- (2) 進港船舶種類：以油輪 373 艘次為最多，其次為液化輪 259 艘次，再次為散裝輪 141 艘次。
- (3) 進港輪船航次：以國內而言，來自於台中港 15 艘次為最多。以國外而言，則以中國 551 艘次為最多，其次為南韓 430 艘次，再次為澳洲 78 艘次。
- (4) 出港輪船航次：以國內而言，前往高雄及台中 16 艘次為最多。以國外而言，則以新加坡 600 艘次為最多，其次為中國 513 艘次，再次為南韓 183 艘次。
- (5) 進港船舶噸級：進港船舶每艘平均 2 萬 5,439 總噸，較上年度增加 475 總噸，其中有 575 艘次船舶總噸位介於 1,000~4,999 總噸位為最多，其次船舶總噸位介於 5,000~9,999 總噸位為 361 艘次，再次船舶總噸位介於 20,000~39,999 總噸位為 259 艘次。
- (6) 在港停泊時間：出港船舶每艘平均停泊 46.70 小時，較上年度減少 1.87 小時，其中有 753 艘次以船舶停泊 25~48 小時為最多，其次為 24 小時以內者 497 艘次，再次為 49~72 小時者 325 艘次。

### (二) 貨物

- (1) 船舶承運量：國輪承運 206 萬 1,833 公噸，占全部 3.37%，較上年度增加 16 萬 7,259 公噸，正成長 8.83%。外輪承運 5,909 萬 3,269 公噸，占全部 96.63%，較上年度增加 163 萬 7,786 公噸，正成長 2.85%。
- (2) 貨物來源地：以沙烏地阿拉伯 801 萬 5,806 公噸為最多，占 19.14%，其次為澳洲 669 萬 5,240 公噸，占 15.99%，再次為科威特 435 萬 6,518 公噸，占 10.40%。

(3)貨物運達地：以澳洲 419 萬 4,058 噸為最多，占 21.75%，其次中國大陸為 343 萬 2,023 公噸，占 17.80%，再次為新加坡 329 萬 9,900 公噸，占 17.10%。

(4)進港貨物類別：以非金屬礦物製品 2,799 萬 3,103 公噸為最多，占 66.86%，其次為礦產品 1,273 萬 618 公噸，占 30.40%，再次為化學品 113 萬 9,640 公噸，占 2.72%。

(5)出港貨物類別：以非金屬礦物製品 1,371 萬 7,641 公噸為最多，占 71.13%，其次為化學品 533 萬 3,728 公噸，占 27.66%，再次為礦產品 23 萬 391 公噸，占 1.19%。

(6)進港貨物卸貨碼頭：以西三碼頭 1,832 萬 6,240 公噸為最多，占 43.77%，其次為西二碼頭 778 萬 8,947 公噸，占 18.60%，再次為東四碼頭 590 萬 3,094 公噸，占 14.10%。

(7)出港貨物裝貨碼頭：以東七碼頭 402 萬 4,670 公噸為最多，占 20.87%，其次為西二碼頭 374 萬 1,456 公噸，占 19.40%，再次為東八碼頭 312 萬 2,613 噸，占 16.19%。

### 三、棧埠統計資料

114 年度棧埠裝卸情形，依各類統計條件說明如次：

(1)貨主：以台塑石化公司 5,009 萬 1,822 公噸為最多，占 82.64%，其次為台塑公司 379 萬 5,372 公噸，占 6.26%。

(2)裝卸貨物：裝貨部份以管道貨 1,757 萬 7,660 公噸為最多，占裝貨量 94.71%。卸貨部份以管道貨 2,918 萬 1,079 公噸為最多，占卸貨量 69.39%，其次為燃煤 1,128 萬 6,980 公噸，占 26.84%。

(3)裝卸效率：平均每小時裝貨量 493 公噸，較上年度增加 1.03%。平均每小時卸貨量 835 公噸，較上年度減少 3.58%。

(4)貨櫃：自 103 年 05 月份起未有貨櫃裝卸業務。

#### 四、航政統計資料

114 年麥寮港海事案件計 0 件，較上年度減少 2 件。

#### 五、財務統計資料

港口公司及裝卸單位 114 年營業收入總計 39.80 億元，較上年減少 0.71 億元，減少 1.80%。營業支出總計 29.11 億元，較上年減少 0.2 億元，減少 0.71%。

#### 六、組織及人事統計資料

- (1)港口公司：負責麥寮港之經營與管理，設有管理組、航管組、港安組及工程組，由航管組、港安組及工程組負責現地港務業務，合計 38 人，較上年度減少 1 人。
- (2)港灣作業機構：麥寮港之拖船操作業務係由港口公司委託台塑海運公司執行，另帶解纜、船舶垃圾清理及港區海面垃圾清理等業務由外包廠商負責辦理，合計 166 人，較上年度增加 6 人。
- (3)棧埠作業機構：由區內興辦工業人委託台塑石化公司碼槽處執行專用碼頭之裝卸作業，另攔油索佈放、加油及加水等作業由外包廠商負責辦理，合計 729 人，較上年度增加 7 人。

#### 七、港埠設施統計資料

- (1)港棧設施：20 座專用碼頭。
- (2)船舶：拖船 9 艘、交通船 4 艘及什用船 3 艘等 16 艘港勤船舶，與上年度相同。
- (3)機具：15 台機具，與上年度相同。
- (4)車輛：15 台車輛，與上年度相同。

表 1 114 年度台灣地區各港口營運量比較分析表

港口別	進 港 船 舶				吞 吐 量		貨 物 裝 卸 量	
	艘 次	%	總 噸 位	%	公 噸	%	計 費 噸	%
總 計	41,414	100.00	750,620,747	100.00	285,307,650	100.00	755,790,470	100.00
麥 寮 港	1,842	4.45	46,858,844	6.24	61,155,102	21.43	60,612,213	8.02
和 平 港	315	0.76	5,387,623	0.72	7,215,008	2.53	7,288,488	0.96
高 雄 港	14,447	34.88	374,213,547	49.85	98,653,906	34.58	393,824,690	52.11
基 隆 港	4,739	11.44	85,254,598	11.36	15,191,462	5.32	65,230,661	8.63
台 中 港	13,145	31.74	129,812,912	17.29	64,154,621	22.49	137,497,505	18.19
台 北 港	4,770	11.52	90,315,023	12.03	23,294,714	8.16	74,299,281	9.83
花 蓮 港	1,054	2.55	7,382,945	0.98	8,197,056	2.87	8,482,360	1.12
安 平 港	730	1.76	6,614,941	0.88	3,776,515	1.32	4,715,868	0.62
蘇 澳 港	372	0.90	4,780,314	0.64	3,669,266	1.29	3,839,404	0.51

商港資料來源：高雄港統計年報。

## Chapter I. Basic Overview

### 1. Basic Harbor Information

In response to basic domestic development, to co-op with the land necessity of the Six Naphtha Cracking Complex Project and its expansion, and to domestically provide existing and future necessities for the construction and relocation of petrochemical business. The Ministry of Economic Affairs has planned to develop the Yunlin offshore Primary Industry Zone by dredging sea sand for landfill to create offshore lands. The lands created include Mailiao, Hsin Hsing, Tai Hsi, and Ssu Hu. Mailiao area is the petrochemical zone under the Sixth Naphtha Cracking Complex Project which was proceeded by the Conglomerates of Formosa Plastic by dredging sea sand for landfill. The special purpose wharves inside the industrial harbor of Mailiao (hereinafter referred to as Mailiao Harbor) were all constructed to cooperate with the Sixth Naphtha Cracking Complex Project.

Mailiao Harbor was the first domestic private enterprise constructed, operated and managed harbor. The harbor operation is run by the Mailiao Harbor Administration Corporation (hereinafter referred to as Mailiao Harbor Corporation) established by the Conglomerates of Formosa Plastic. The Industrial Development Bureau of the Ministry of Economic Affairs constructed the management groups for Mailiao exclusive industrial harbor (hereinafter referred to as Administration groups) on Oct. 1, 2000, and used the most streamlined manpower to supervise and implement harbor administrative management, and coordinate the navigation & shipping

supervision, customs, harbor police, quarantine, security inspection and other relevant government authorities. After an inspection approval was carried out by the Ministry of Transportation and Communications, the Ministry of Finance, the Ministry of the Interior, the Ministry of National Defense, the Department of Coast Guard, the Department of Environment Protection, the Committee of Agriculture Affairs and the Government of Yunlin County on Feb. 22, 2001; it started its official operation on Mar. 1, 2001.

Mai Liao Harbor is located at longitude 120°08.9' E, latitude 23°46.9'. It is bordered to the north by Chuoshui Stream and to the south by Hsinhuwei Stream. The harbor lies 40 nautical miles south of Taichung and 80 nautical miles north of Kaohsiung. The harbor direction faces west with an inclination of 34 degrees to the south. The water depth of the vessel channel is 24 meters which is able to support the in and out of oil tankers(300,000 DWT), and the harbor is the deepest one in Taiwan.

## 2. Harbor and Wharf

### A. Harbor Facilities

- (1) Breakwater: The west breakwater is 3,243 meters long, and the south breakwater is 2,227 meters long.
- (2) Turning basin: 900 meters in diameter.
- (3) Outer waters: The outer waters are divided into a Pilot Station, outer navigation channel and anchorage.
- (4) Aids to navigation: Include ranges and breakwater lighthouses to assist in guiding ships into and out of the harbor.

- (5) Signal station: Include VTS (vessel traffic services), climate & sea conditions facilities and DSB communication equipment.
- (6) Harbor craft basin: For the wharfing and servicing (oil and water) of harbor craft.
- (7) Harbor administration building: Provides government agencies, harbor operating unit, Mailiao Harbor Corporation and signal station or operational demands.
- (8) Ship & machinery repair works and slipway: For repair, inspection and maintenance of harbor craft.

#### B. Wharf Facilities

The 20 operating appropriate berths respectively are constructed, operated and managed by Formosa Petrochemical Corporation and Mailiao Power Corporation.

### 3. Equipment Overview

#### A. Harbor Vessels

Mailiao Harbor Corporation has purchased 9 tug boats, 1 shuttle boat and 1 miscellaneous boat to assist the incoming/outgoing vessels and docking requirements.

#### B. Loading/Unloading Equipment

According to the loading/unloading demands, various wharfs' loading/unloading operation unit will purchase the loading/unloading equipment, such as unloading arm and coal unloader to provide the loading/unloading services.

## Chapter II. Summary Analysis

### 1. Operation Performance

#### A. Incoming/Outgoing Vessels

(1) Incoming Vessels: A total of 1,842 vessels called at Mailiao Harbor in 2025 and amounted to a gross tonnage of 46,858,844. The number of vessels had a decrease of 10 (0.54%), and the gross tonnage increased 625,477 GT(1.35%), compared to the previous year. Compared to 2001, the number of the vessels had an increase of 471 (34.35%) and the gross tonnage increased 24,938,141 GT (113.77%).

(2) Outgoing Vessels: A total of 1,843 vessels called at Mailiao Harbor in 2025 and amounted to a gross tonnage of 46,945,636. The number of vessels had a decrease of 13(0.70%), and the gross tonnage increased 536,891 GT(1.16%), compared to that of the previous year. Compared to 2001, the number of vessels had an increase of 469 (34.21%) and the gross tonnage increased 24,982,470 GT (113.75%).

B. Cargo throughput: At Mailiao Harbor, the imports reached 41,870,823 MT in 2025, and the exports reached 19,284,279 MT. The amount of cargo throughput reached 61,155,102 MT, 1,805,045 MT (3.04%) more than that of the previous year. It had an increase of 34,835,056 MT (132.35%) over 2001.

C. Loading and Unloading: In 2025 the amount of loading and unloading reached 60,612,213 revenue tons, 993,509 MT (1.67%) more than that of

the previous year. Compared to 2001, the amount of loading and unloading had an increase of 34,570,785 MT (132.75%). In addition, Formosa Petrochemical Corporation was the biggest owner of cargo in 2025, 50,091,822 MT(82.64%), followed by Formosa Plastics Corporation's 3,795,372 MT (6.26%), and Mailiao Power Corporation's 2,835,731 MT (4.68%).

D. The business volume comparison table of Taiwan harbors in 2025 is listed for reference (See Table 1).

## 2. Harbor Statistical Information

The 2025 incoming/outgoing vessels and cargo are described in accordance with the various statistical conditions as follows:

### A. Vessels

- (1) Incoming Vessels by Nationality: Most incoming vessels came from Panama, 332 followed by South Korea, 199 and Liberia, 187.
- (2) Incoming Vessels by Kind: There are 373 tankers, followed by 259 Chemical Tankers, and 141 Liquid Chemical Tankers.
- (3) Incoming Vessels by Line of Navigation: Domestically, there are 15 ships from Taichung Harbor. Internationally, there are 551 ships from China, followed by 430 ships from South Korea and 78 ships from Australia.
- (4) Outgoing Vessels by Line of Navigation: Domestically, there are 16 ships going to Kaohsiung and Taichung. Internationally, there are 600 ships going to Singapore, followed by 513 ships going to China and 183 ships

going to South Korea.

(5) Incoming Vessels by Gross Tonnage: On average, each incoming vessel has 25,439GT, compared to 2024, the gross tonnage had an increase of 475, of which there are 575 vessels between 1,000 GT~4,999 GT, 361 vessels between 5,000 GT~9,999 GT, and 259 vessels between 20,000 GT~39,999 GT.

(6) Time of Vessels Mooring in port: The average number of mooring hours of the outbound vessels is 46.70 which is 1.87 hours less than in 2024, of which there are 753 vessels mooring for 25~48 hours, followed by 497 vessels mooring in 24 hours, and 325 vessels mooring for 49~72 hours.

## B. Cargo

(1) Vessels Carried Volume: The domestic vessel carried volume is 2,061,833 tons (3.37%) and 167,259 tons more than in 2024; it has a growth of 8.83%. The foreign vessels cargo volume is 59,093,269 tons (96.63%), and 1,637,786 tons more than in 2024; it has a growth of 2.85%.

(2) Cargo Origin: Most cargo originates from Saudi Arabia. It has 8,015,806 MT (19.14%), followed by Australia's 6,695,240 MT (15.99%), and Kuwait's 4,356,518 MT (10.40%).

(3) Cargo Destination: Most cargo is destined for Australia's with 4,194,058 MT(21.75%), followed by Mainland China 3,432,023 MT (17.80%), and Singapore's 3,299,900 MT (17.10%).

(4) Classification of Imports: The non-metallic mineral products are the most,

27,993,103 MT (66.86%), followed by 12,730,618 MT of mineral products (30.40%), and 1,139,640 MT of chemical products (2.72%).

(5) Classification of Exports: The non-metallic mineral products are the most, 13,717,641 MT (71.13%), followed by 5,333,728 MT of chemical products (27.66%), and 230,391 MT of minerals products (1.19%).

(6) Unloading Berths of Imports: Berth West-3 has the most unloading of imports, 18,326,240 MT (43.77%), followed by Berth West-2, which has 7,788,947 MT (18.60%), and Berth East-4, which has 5,903,094 MT (14.10%).

(7) Loading Berths of Exports: Berth East-7 has the most loading of exports, 4,024,670 MT (20.87%), followed by Berth West-2 which has 3,741,456 MT (19.40%), and Berth, East-8 which has 3,122,613 MT (16.19%).

### C. Stevedoring & Warehousing Statistical Information

The 2025 Stevedoring & Warehousing situations are described in accordance with the various statistical conditions as follows:

(1) Owner of Cargo: Formosa Petrochemical Corporation is 50,091,822 MT (82.64%) of the most, followed by Formosa Plastics Corporation's 3,795,372 MT (6.26%).

(2) Cargo Handling: For cargo loading, the most is pipe line cargo, 17,577,660 MT (94.71%). For cargo unloading, the most is pipe line cargo, 29,181,079 MT (69.39%), followed by 11,286,980 MT of coal (26.84%).

(3) Cargo Handling Efficiency: The average loading volume is 493 MT per

hour, which is 1.03% more than 2024. The average unloading volume is 835 MT per hour, which is 3.58% less than the previous year.

(4) Container: There is no Loading/unloading container operation since May 2014.

#### 4. Navigation & Shipping Supervision Statistical Information

No marine accident was found in Mailiao Harbor in 2024, two accidents less than the previous year.

#### 5. Financial Statistical Information

The 2025 total operation revenue of Mailiao Harbor Corporation and the loading/unloading units was 3.98 billion, which is 0.071 billion less than in 2024; a negative growth of 1.80%. The total operation expenses were 2.911 billion, which is 0.02 billion less than in 2024; a negative growth of 0.71%.

#### 6. Organization and Personnel Statistical Information

(1) Mailiao Harbor Corporation: responsible for the operation and management of Mailiao Harbor; there is a administration section, a port traffic control section, a port security section and a port engineering section set up. The on-site harbor affairs are run by the port traffic control section, port security section and port engineering section, which has a total of 38 people, one person less than the previous year.

(2) Harbor Operators: tugboat operation of Mailiao Harbor is implemented by Formosa Plastics Marine Corporation, commissioned by Mailiao Harbor Corporation, and mooring&unmooring, vessels trash cleaning and harbor

sea surface trash cleaning, etc. affairs handled by the outsourced suppliers. It has a total of 166 people, 6 persons more than the previous year.

- (3) Berths Operators: district industrial personnel commissioned Formosa Petrochemical Corporation implement appropriate wharf loading/unloading operations. The oil boom laying, oil and water servicing operations are handled by the outsourced suppliers; it has a total of 729 people, 7 people more than the previous year.

#### 7. Harbor Facilities Statistical Information

- (1) Harbor Facilities: 20 specialized wharves.
- (2) Vessels: 16 harbor vessels, including 9 tug boats, 4 shuttle boats and 3 miscellaneous boats, the same as the previous year.
- (3) Machines and Instruments: 15 machines and instruments, the same as the previous year.
- (4) Vehicles: 15 vehicles, the same as the previous year.

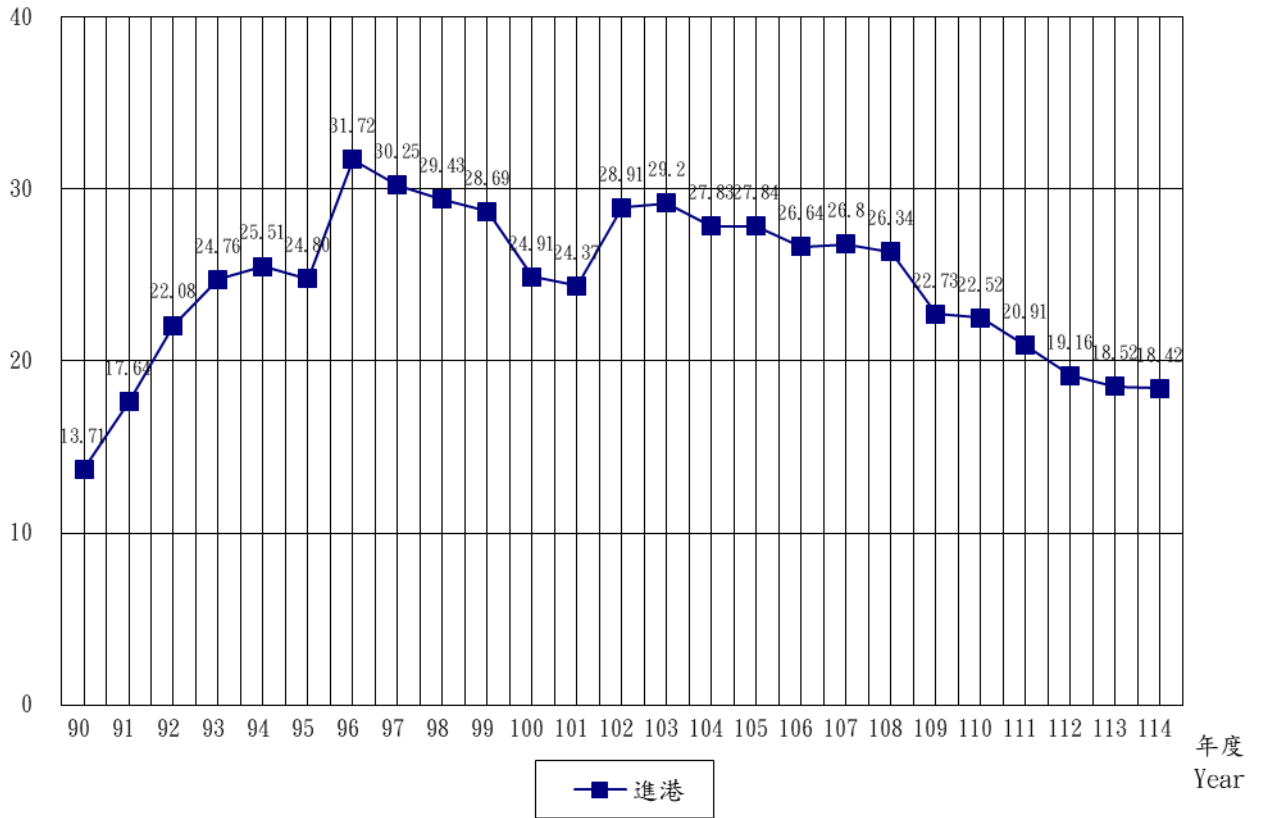
Table 1: The business volume comparison table of Taiwan harbors in 2025

Harbor	Incoming Vessels				Cargo throughput		Cargo Tonnage Handled	
	Vessels	%	Gross Tonnage	%	Tons	%	Revenue Tons	%
Total	41,414	100.00	750,620,747	100.00	285,307,650	100.00	755,790,470	100.00
Mailiao	1,842	4.45	46,858,844	6.24	61,155,102	21.43	60,612,213	8.02
Heping	315	0.76	5,387,623	0.72	7,215,008	2.55	7,288,488	0.96
Kaohsiung	14,447	34.88	374,213,547	49.85	98,653,906	34.53	393,824,690	52.11
Keelung	4,739	11.44	85,254,598	11.36	15,191,462	5.32	65,230,661	8.63
Taichung	13,145	31.74	129,812,912	17.29	64,154,621	22.49	137,497,505	18.19
Taipei	4,770	11.52	90,315,023	12.03	23,294,714	8.16	74,299,281	9.83
Hualien	1,054	2.55	7,382,945	0.98	8,197,056	2.87	8,482,360	1.12
Anping	730	1.76	6,614,941	0.88	3,776,515	1.32	4,715,868	0.62
Suao	372	0.90	4,780,314	0.64	3,669,266	1.29	3,839,404	0.51

Port Information Source: Annual Statistical Report of Kaohsiung Port

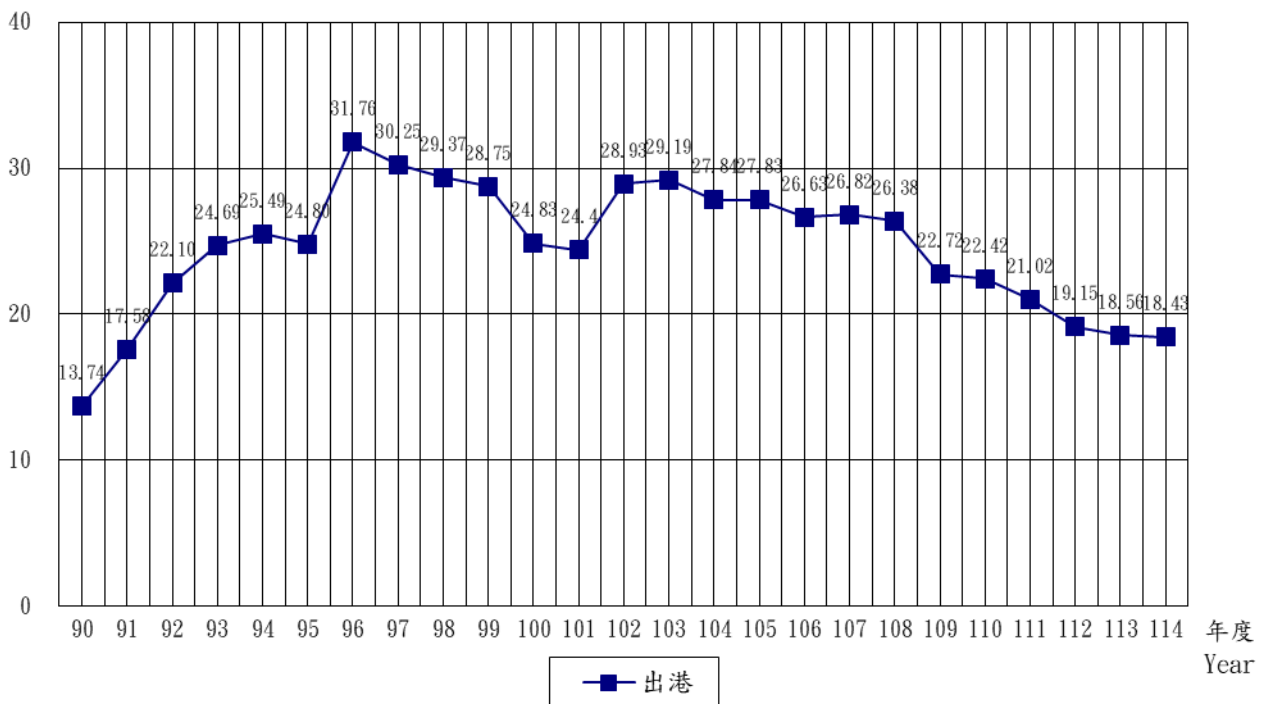
百艘次  
(100 Vessels)

### 進港船舶艘次 Number of Incoming Vessels

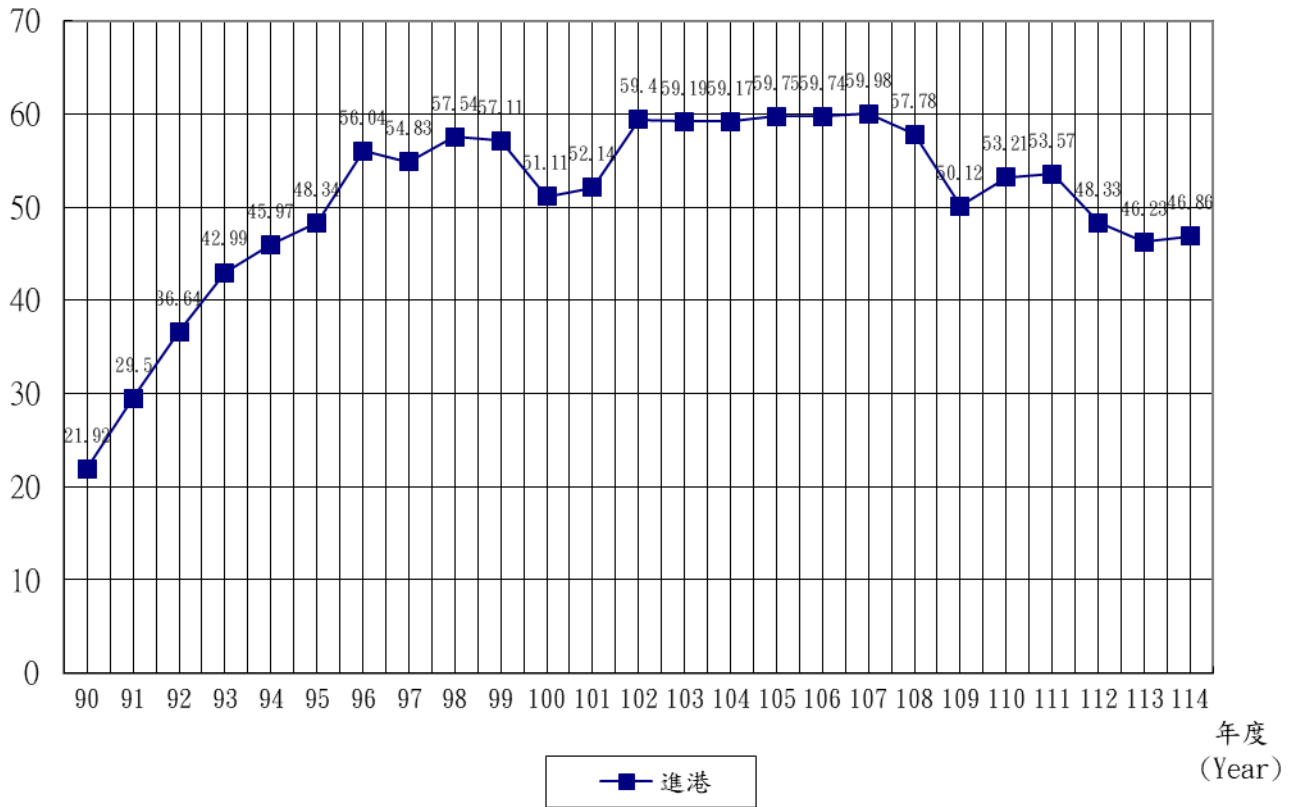


百艘次  
(100 Vessels)

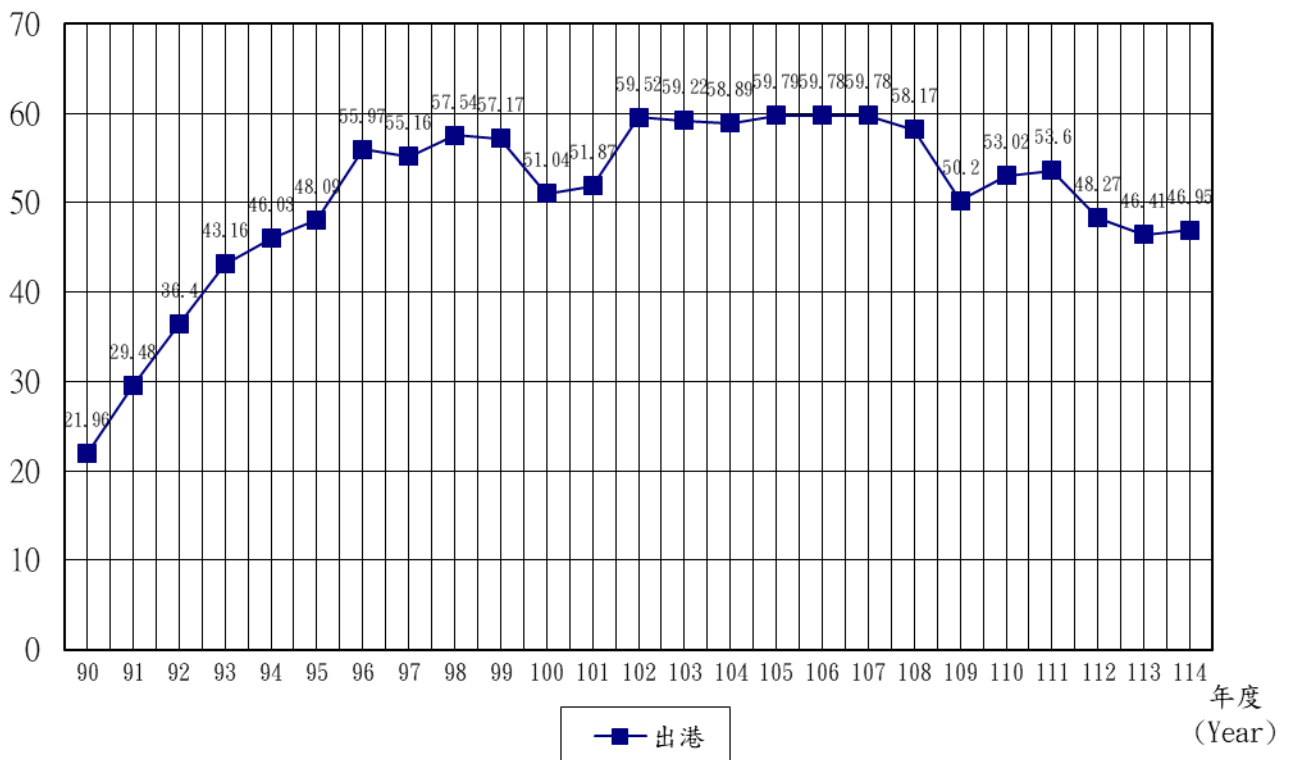
### 出港船舶艘次 Number of Outgoing Vessels



進港船舶總噸位  
Gross Tonnage of Incoming Vessels

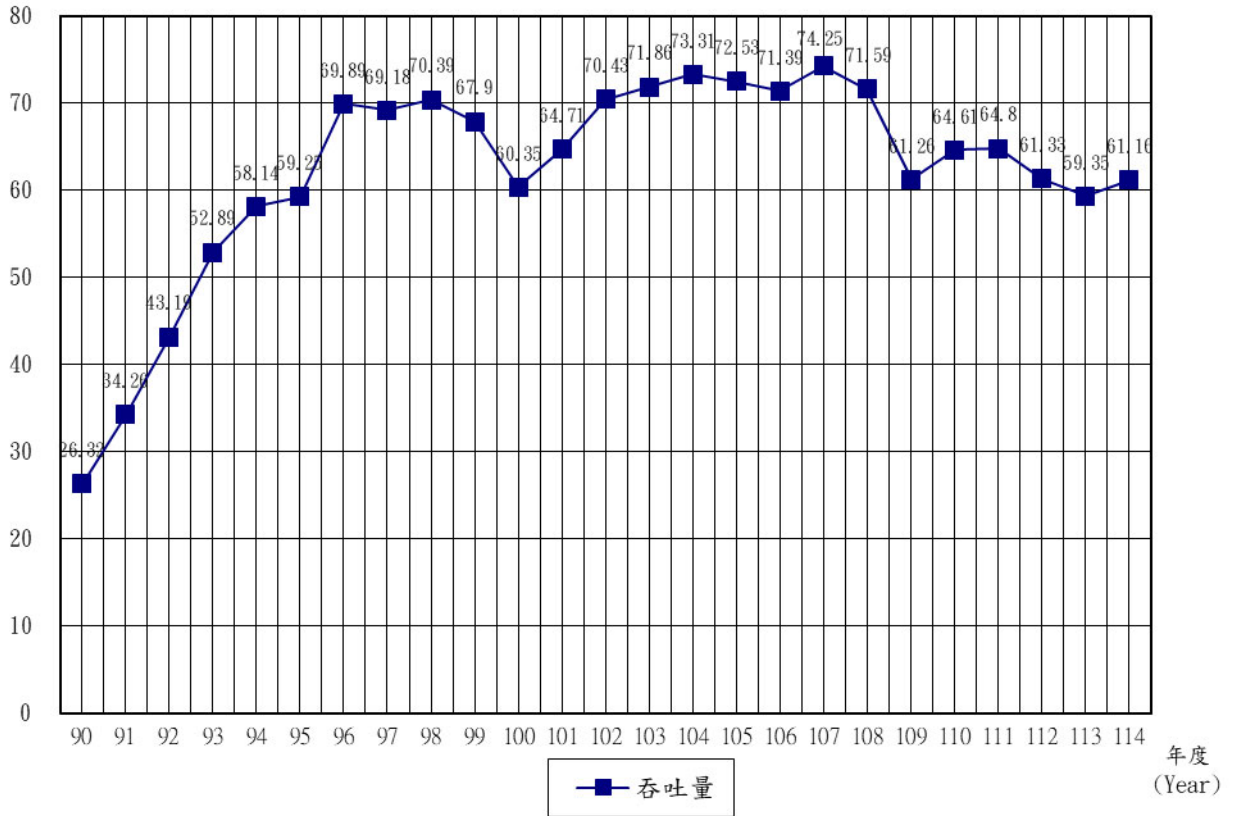


出港船舶總噸位  
Gross Tonnage of Outgoing Vessels



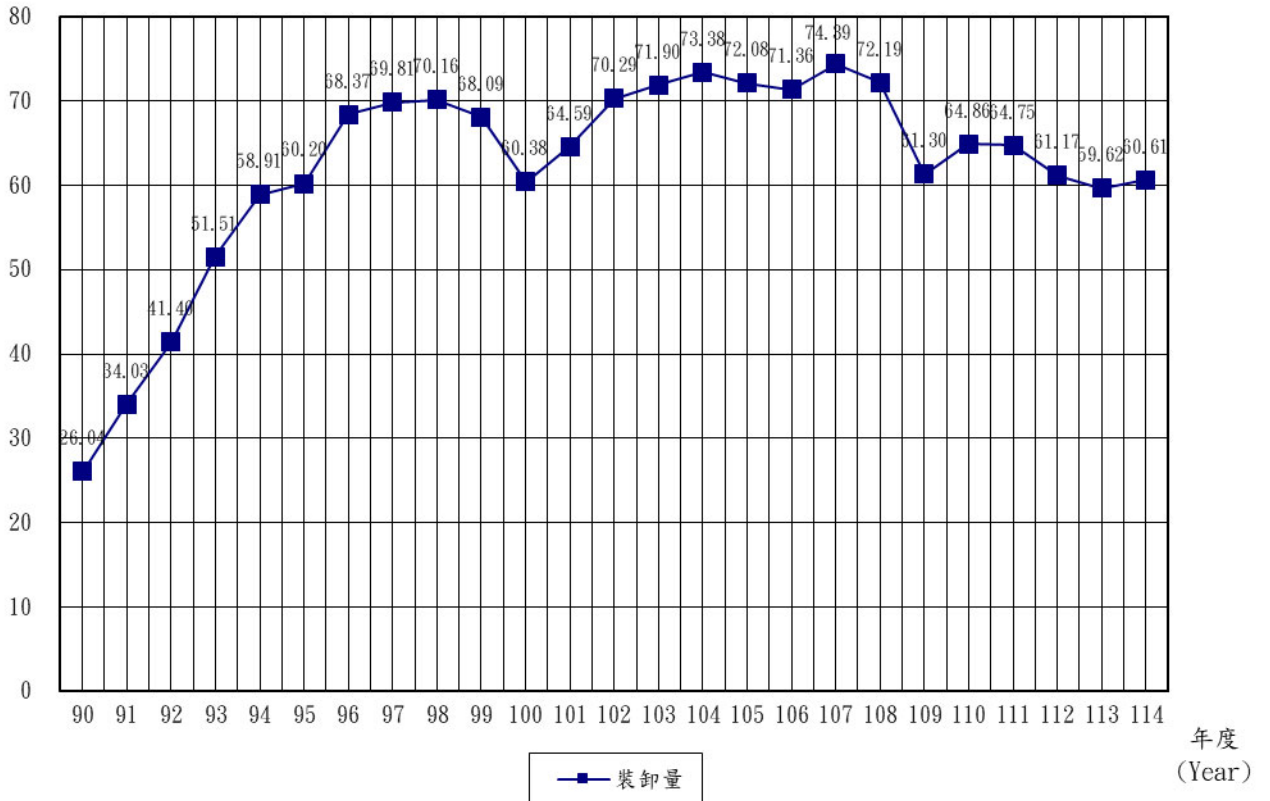
百萬公噸  
(Million MT)

### 貨物吞吐量 Amount of Cargoes Throughput



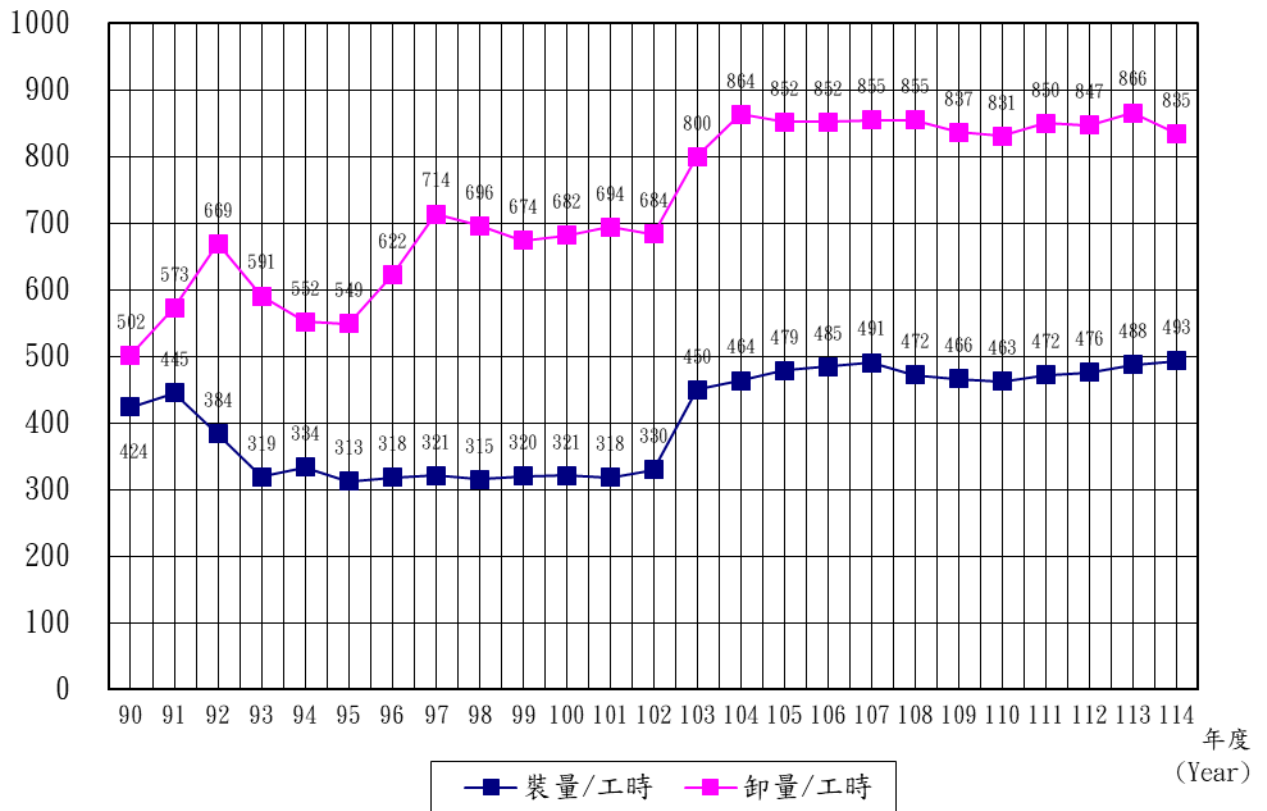
百萬公噸  
(Million MT)

### 貨物裝卸量 Volume of Cargoes Handled



量/時  
(V/H)

### 貨物裝卸效率 Efficiency of Cargoes Handled



## 第二篇 統計要覽

### 一、港務

附表一 進出港輪船運輸量

艘次單位：次  
總噸位單位：噸

年 (月) 別 Year and Month	進 港 Incoming					
	總 計 Total		國 內 Domestic		國 外 Foreign	
	艘 次 V.	總 噸 位 G. T.	艘 次 V.	總 噸 位 G. T.	艘 次 V.	總 噸 位 G. T.
2015	2,783	59,173,618	89	561,970	2,694	58,611,648
2016	2,784	59,750,426	77	521,862	2,707	59,228,564
2017	2,664	59,737,619	70	413,033	2,594	59,324,586
2018	2,680	59,980,231	71	479,786	2,609	59,500,445
2019	2,634	57,779,734	112	736,708	2,522	57,043,026
2020	2,273	50,120,268	87	432,683	2,186	49,687,585
2021	2,252	53,210,341	158	854,566	2,094	52,355,775
2022	2,091	53,570,501	133	750,105	1,958	52,820,396
2023	1,916	48,329,127	132	818,542	1,784	47,510,585
2024	1,852	46,233,367	123	653,668	1,729	45,579,699
2025	1,842	46,858,844	70	402,461	1,772	46,456,383
一 月(Jan.)	140	3,407,036	2	11,126	138	3,395,910
二 月(Feb.)	137	3,623,743	3	23,597	134	3,600,146
三 月(Mar.)	148	3,871,167	4	34,706	144	3,836,461
四 月(Apr.)	143	3,713,225	6	51,618	137	3,661,607
五 月(May)	154	3,794,021	8	12,850	146	3,781,171
六 月(June)	162	4,178,292	2	5,963	160	4,172,329
七 月(July.)	170	4,275,154	9	65,322	161	4,209,832
八 月(Aug.)	177	4,363,145	5	22,529	172	4,340,616
九 月(Sep.)	154	4,141,213	10	70,388	144	4,070,825
十 月(Oct.)	139	3,438,381	7	18,456	132	3,419,925
十一月(Nov.)	149	3,548,303	7	60,586	142	3,487,717
十二月(Dec.)	169	4,505,164	7	25,320	162	4,479,844

資料來源：麥寮工業區專用港管理股份有限公司。

## 2nd Statistics Tables

### 一、Harbor Management

Table 1. Tonnage of Imports and Exports carried by Incoming and Outgoing Vessels

Unit: V., Ton					
出 港					
Outgoing					
總 計 Total		國 內 Domestic		國 外 Foreign	
艘 次	總 噸 位	艘 次	總 噸 位	艘 次	總 噸 位
V.	G. T.	V.	G. T.	V.	G. T.
2,784	58,887,018	105	755,438	2,679	58,131,580
2,783	59,794,434	85	654,369	2,698	59,140,065
2,663	59,779,242	74	557,844	2,589	59,221,398
2,682	59,777,299	69	417,352	2,613	59,359,947
2,638	58,166,324	104	570,078	2,534	57,596,246
2,272	50,199,545	87	386,791	2,185	49,812,754
2,242	53,016,853	153	802,458	2,089	52,214,395
2,102	53,600,101	149	805,586	1,953	52,794,515
1,915	48,266,241	124	708,363	1,791	47,557,878
1,856	46,408,745	113	511,792	1,743	45,896,953
1,843	46,945,636	63	388,102	1,780	46,557,534
145	3,657,322	5	53,730	140	3,603,592
134	3,422,273	2	11,126	132	3,411,147
149	3,948,659	5	34,983	144	3,913,676
140	3,592,438	5	34,750	135	3,557,688
154	3,730,832	5	12,309	149	3,718,523
156	4,113,048	2	5,963	154	4,107,085
177	4,379,827	11	47,403	166	4,332,424
177	4,273,025	3	16,689	174	4,256,336
154	3,967,562	10	46,765	144	3,920,797
135	3,437,255	2	25,671	133	3,411,584
151	3,841,684	5	53,276	146	3,788,408
171	4,581,711	8	45,437	163	4,536,274

附表二 進 港 輪 船 國 籍

總噸位單位：噸

年 (月) 別 Year and Month	總 計 Total		巴 拿 馬 Panama		中 華 民 國 R.O.C		香 港 Hong Kong	
	艘次 No. of Vessels	總噸位 G. T.	艘次 No. of Vessels	總噸位 G. T.	艘次 No. of Vessels	總噸位 G. T.	艘次 No. of Vessels	總噸位 G. T.
	2015	2,783	59,173,618	301	7,008,656	260	2,655,412	464
2016	2,784	59,750,426	387	9,679,838	248	2,684,317	431	6,243,014
2017	2,664	59,737,619	392	10,230,275	221	2,656,466	383	4,834,748
2018	2,680	59,980,231	413	10,829,243	205	2,558,887	389	5,507,448
2019	2,634	57,779,734	435	11,310,368	254	2,875,964	344	5,333,751
2020	2,273	50,120,268	328	8,941,999	200	2,201,463	346	4,609,178
2021	2,252	53,210,341	256	5,833,894	279	2,614,118	346	4,717,305
2022	2,091	53,570,501	263	6,795,649	302	2,821,502	175	3,521,387
2023	1,916	48,329,127	300	8,067,355	242	2,245,352	135	3,811,652
2024	1,852	46,233,367	306	6,878,781	193	1,509,740	101	2,845,434
2025	1,842	46,858,844	332	7,525,197	165	1,627,240	41	1,461,244
一 月(Jan.)	140	3,407,036	28	462,913	12	135,836	4	59,120
二 月(Feb.)	137	3,623,743	35	806,906	9	98,423	5	170,072
三 月(Mar.)	148	3,871,167	23	657,424	13	146,945	8	444,392
四 月(Apr.)	143	3,713,225	19	465,373	13	146,766	1	26,471
五 月(May)	154	3,794,021	27	604,827	18	137,560	1	40,014
六 月(June)	162	4,178,292	25	546,743	10	105,731	2	66,798
七 月(July.)	170	4,275,154	29	692,902	17	159,274	2	30,460
八 月(Aug.)	177	4,363,145	28	845,636	15	147,239	5	155,642
九 月(Sep.)	154	4,141,213	32	598,473	17	153,290	3	98,456
十 月(Oct.)	139	3,438,381	22	706,374	11	93,102	4	161,635
十一 月(Nov.)	149	3,548,303	33	533,361	14	165,515	5	113,691
十二 月(Dec.)	169	4,505,164	31	604,265	16	137,559	1	94,493

資料來源：麥寮工業區專用港管理股份有限公司

**Table 2. Number of Incoming Vessels by Registered Nationality**

Unit : Vessel;Ton							
新加坡 Singapore		南 韓 Rep. Of Korea		賴比瑞亞 Liberia		其 他 Others	
艘次 No. of Vessels	總噸位 G. T.	艘次 No. of Vessels	總噸位 G. T.	艘次 No. of Vessels	總噸位 G. T.	艘次 No. of Vessels	總噸位 G. T.
166	4,362,166	158	944,016	233	15,615,746	1,201	21,187,341
132	3,122,583	188	1,072,671	245	16,962,512	1,153	19,985,491
113	3,175,420	190	1,220,179	222	15,631,126	1,143	21,989,405
121	3,197,909	213	962,306	237	17,706,381	1,102	19,218,057
143	4,374,978	239	1,215,833	179	14,124,303	1,040	18,544,537
121	2,623,126	203	1,060,940	168	13,332,520	907	17,351,042
102	2,550,901	199	1,130,314	217	16,440,730	853	19,923,079
78	2,432,934	175	797,567	239	17,008,043	859	20,193,419
69	2,485,753	206	1,106,049	178	14,318,845	786	16,294,121
93	2,806,595	201	965,717	197	14,590,543	761	16,636,557
121	3,786,899	199	903,910	181	13,443,307	803	18,111,047
4	127,528	15	66,622	16	1,382,470	61	1,172,547
7	220,118	13	61,839	22	1,441,509	46	824,876
7	202,785	17	83,587	11	962,753	69	1,373,281
18	412,646	11	37,529	16	1,151,888	65	1,472,552
11	422,576	14	66,256	13	1,021,905	70	1,500,883
11	310,661	21	82,280	18	1,334,159	75	1,731,920
12	510,056	17	87,759	16	1,138,865	77	1,655,838
9	235,472	18	79,502	16	1,079,296	86	1,820,358
10	210,036	16	67,218	16	1,522,023	60	1,491,717
4	163,579	21	79,248	13	684,845	64	1,549,598
12	316,470	17	90,660	12	982,538	56	1,346,068
16	654,972	19	101,410	12	741,056	74	2,171,409

### 附表三 進 港 輪 船 種 類

單位：艘次

年 (月) 別	總計	油輪	液化輪	貨櫃輪	化學輪
Year and Month	Total	Tankers	Liquid Chemical Tankers	Containers	Chemical Tankers
2015	2,783	867	409	-	575
2016	2,784	723	409	-	421
2017	2,664	679	371	-	305
2018	2,680	639	407	-	229
2019	2,634	635	361	-	193
2020	2,273	483	267	-	188
2021	2,252	481	235	-	146
2022	2,091	480	247	-	130
2023	1,916	406	190	-	144
2024	1,852	369	136	-	140
2025	1,842	373	259	-	100
一 月(Jan.)	140	29	26	-	8
二 月(Feb.)	137	28	18	-	6
三 月(Mar.)	148	36	18	-	10
四 月(Apr.)	143	27	19	-	5
五 月(May)	154	25	25	-	9
六 月(June)	162	36	24	-	6
七 月(July.)	170	32	25	-	5
八 月(Aug.)	177	32	30	-	14
九 月(Sep.)	154	35	17	-	8
十 月(Oct.)	139	24	14	-	9
十一月(Nov.)	149	30	18	-	14
十二月(Dec.)	169	39	25	-	6

資料來源：麥寮工業區專用港管理股份有限公司

**Table 3. Number of Incoming Vessels by Kind**

				Unit : Vessel
一般貨輪	散裝輪	煤炭輪	其 他	
Ordinary Cargoes	Cargos in Bulk	COAL	Others	
129	156	14	633	
110	130	14	977	
91	131	12	1,075	
110	142	8	1,145	
134	152	7	1,152	
132	123	8	1,072	
114	152	6	1,118	
104	144	4	982	
106	149	-	921	
108	134	-	965	
117	141	1	851	
6	10	-	61	
10	7	-	68	
12	11	1	60	
10	10	-	72	
7	15	-	73	
8	11	-	77	
13	15	-	80	
13	12	-	76	
10	15	-	69	
11	12	-	69	
7	9	-	71	
10	14	-	75	

## 附表四 進 港 輪 船 航 次

單位：航次

年 (月) 別 Year and Month	國內						
	總計 Total	小計 Sub Total	高雄 Kaohsiung	台中 Taichung	台北 Taipei	基隆 Keelung	其他 Others
2015	2,783	89	55	4	3	1	26
2016	2,784	77	31	11	1	1	33
2017	2,664	70	30	7	4	1	28
2018	2,680	71	12	11	2	-	46
2019	2,634	112	25	9	-	-	78
2020	2,273	87	17	7	1	2	60
2021	2,252	158	21	26	2	2	107
2022	2,091	133	16	12	1	-	104
2023	1,916	132	42	21	4	1	64
2024	1,852	123	49	25	7	-	42
2025	1,842	70	12	15	4	-	39
一 月(Jan.)	140	2	-	-	1	-	1
二 月(Feb.)	137	3	-	-	-	-	3
三 月(Mar.)	148	4	-	2	-	-	2
四 月(Apr.)	143	6	2	-	-	-	4
五 月(May)	154	8	3	3	-	-	2
六 月(June)	162	2	1	-	-	-	1
七 月(July.)	170	9	1	4	-	-	4
八 月(Aug.)	177	5	2	-	-	-	3
九 月(Sep.)	154	10	1	3	1	-	5
十 月(Oct.)	139	7	1	1	2	-	3
十一月(Nov.)	149	7	1	-	-	-	6
十二月(Dec.)	169	7	-	2	-	-	5

資料來源：麥寮工業區專用港管理股份有限公司

Table 4. Number of Incoming Vessels by Line of Navigation

Unit : Voyage it : Voyage

小計 Sub Total	國					外				其他 Others
	香港 Hong kong	日本 Japan	南韓 Korea	菲律賓 Philippine	澳洲 Australia	沙烏地阿 拉伯 Saudi Arabia	越南 Vietnam	中國 China		
2,694	94	92	268	184	95	87	90	1,414	370	
2,707	81	123	405	232	109	68	86	1,164	439	
2,594	55	139	407	220	91	66	50	1,058	508	
2,609	44	147	482	140	81	63	76	1,053	523	
2,522	38	151	539	91	94	77	92	969	471	
2,186	44	109	396	86	69	54	86	835	507	
2,094	31	123	399	48	77	77	66	728	545	
1,958	40	106	451	79	91	50	75	624	442	
1,784	31	63	317	55	80	59	69	628	482	
1,729	28	55	299	43	67	61	49	621	506	
1,772	40	56	430	50	78	44	77	551	446	
138	5	5	33	9	5	2	7	42	30	
134	4	5	30	4	4	4	5	38	40	
144	3	3	27	5	8	3	5	50	40	
137	3	7	32	3	6	-	10	38	38	
146	1	3	29	7	6	4	2	49	45	
160	3	5	45	2	6	3	4	50	42	
161	2	3	38	2	9	6	10	53	38	
172	4	7	32	5	5	7	5	66	41	
144	3	9	41	2	10	4	8	38	29	
132	1	2	45	2	8	4	5	40	25	
142	3	4	33	3	3	1	8	42	45	
162	8	3	45	6	8	6	8	45	33	

## 附表五 出 港 輪 船 航 次

單位：航次

年 (月) 別 Year and Month	國 內 Domestic						
	總計 Total	小計 Sub Total	高雄 Kaohsiung	台北 Taipei	台中 Taichung	基隆 Keelung	其他 Others
2015	2,784	105	79	1	2	1	22
2016	2,783	85	48	-	7	1	29
2017	2,663	74	31	7	4	-	32
2018	2,682	69	16	1	7	-	45
2019	2,638	104	35	-	5	-	64
2020	2,272	87	19	-	4	2	62
2021	2,242	153	28	2	25	-	98
2022	2,102	149	29	2	19	-	99
2023	1,915	124	39	7	20	-	58
2024	1,856	113	44	6	26	-	37
2025	1,843	63	16	1	16	-	30
一 月(Jan.)	145	5	1	-	3	-	1
二 月(Feb.)	134	2	-	-	-	-	2
三 月(Mar.)	149	5	-	-	2	-	3
四 月(Apr.)	140	5	1	-	-	-	4
五 月(May)	154	5	-	-	2	-	3
六 月(June)	156	2	-	-	-	-	2
七 月(July.)	177	11	1	-	5	-	5
八 月(Aug.)	177	3	-	-	-	-	3
九 月(Sep.)	154	10	3	-	-	-	7
十 月(Oct.)	135	2	1	-	1	-	-
十一月(Nov.)	151	5	4	1	-	-	-
十二月(Dec.)	171	8	5	-	3	-	-

資料來源：麥寮工業區專用港管理股份有限公司

**Table 5. Number of Outgoing Vessels by Line of Navigation**

Unit : Voyage

小計 Sub Total	國				外						其他 Others
	日本 Japan	香港 Hong kong	南韓 Korea	新加坡 Singapore	澳洲 Australia	菲律賓 Philippine	越南 Vietnam	中國 China	沙烏地 阿拉伯 Saudi arabia		
2,679	69	46	211	367	116	218	124	1,145	78	305	
2,698	116	20	304	279	112	273	105	1,064	45	380	
2,589	131	19	282	300	90	218	77	1,042	52	378	
2,613	147	28	372	476	81	133	94	1,058	21	203	
2,534	123	27	416	442	99	71	112	973	46	225	
2,185	90	42	333	411	71	79	94	828	36	201	
2,089	91	20	286	444	87	44	70	731	46	270	
1,953	82	20	178	549	90	48	76	624	12	274	
1,791	53	22	205	599	45	44	59	594	30	140	
1,743	51	9	221	660	26	31	70	521	29	125	
1,780	40	26	183	600	77	37	98	513	5	201	
140	6	3	13	47	8	4	8	40	-	11	
132	6	-	9	48	7	2	6	36	-	18	
144	2	3	12	44	7	4	11	43	-	18	
135	3	5	5	46	6	1	8	40	-	21	
149	2	2	19	51	4	3	1	46	1	20	
154	6	1	16	59	7	2	9	42	-	12	
166	-	3	19	59	8	3	7	48	1	18	
174	3	3	18	54	4	3	9	60	1	19	
144	2	2	11	54	4	3	11	40	-	17	
133	2	2	23	38	8	3	4	41	1	11	
146	4	-	17	52	4	2	15	37	-	15	
163	4	2	21	48	10	7	9	40	1	21	

附表六 進港輪船噸級與在港停泊時間

單位：艘次；噸

停泊時間 Mooring's Time	合計Total				
	艘次 No. of Vessels	未滿1000噸 Under1,000G.T.	1,000-4,999噸 1,000-4,999G.T.	5,000-9,999噸 5,000-9,999G.T.	10,000-19,999噸 10,000-19,999G.T.
24小時以內 Under 24hours	497	19	322	101	21
25-48小時 25-48hours	753	4	223	165	90
49-72小時 49-72hours	325	1	24	70	82
73-96小時 73-96hours	132	-	3	18	38
97-120小時 97-120hours	64	-	-	6	12
121-144小時 121-144hours	30	-	-	1	8
145-168小時 145-168hours	18	-	-	-	2
169-192小時 169-192hours	12	-	-	1	-
193小時以上 over193hours	12	2	1	-	1
年(月)別 Year and Month					
2015	2,783	38	1,022	624	267
2016	2,784	31	975	638	239
2017	2,664	25	884	613	248
2018	2,680	13	929	637	255
2019	2,634	28	900	626	243
2020	2,273	32	739	591	195
2021	2,252	52	584	599	269
2022	2,091	39	573	414	316
2023	1,916	39	585	397	263
2024	1,852	44	582	351	237
2025	1,842	26	575	361	254
一月(Jan.)	140	-	53	24	21
二月(Feb.)	137	-	35	31	23
三月(Mar.)	148	2	47	27	20
四月(Apr.)	143	2	45	23	21
五月(May)	154	6	45	30	20
六月(June)	162	1	56	27	23
七月(July.)	170	4	47	35	25
八月(Aug.)	177	1	60	32	24
九月(Sep.)	154	5	47	30	17
十月(Oct.)	139	3	43	32	17
十一月(Nov.)	149	-	47	36	20
十二月(Dec.)	169	2	50	34	23

資料來源：麥寮工業區專用港管理股份有限公司

**Table 6. Number of Incoming Vessels by Gross Tonnage And Time of Mooring in Port**

					Unit : Vessels;Ton
噸 位 分 類 Vessels' Gross Tonnage				平均停泊時間(天) Average Mooring's Time(Day)	
20,000-39,999噸 20,000-39,999G.T.	40,000-59,999噸 40,000-59,999G.T.	60,000-99,999噸 60,000-99,999G.T.	滿100,000噸以上 Over100,000G.T.		
32	2	-	-	0.75	
165	28	22	56	1.48	
53	38	30	27	2.46	
6	28	38	1	3.44	
3	11	32	-	4.51	
-	3	18	-	5.42	
-	5	11	-	6.42	
-	6	5	-	7.50	
-	5	3	-	15.69	
385	172	179	96	1.55	
496	157	144	104	1.51	
449	180	173	92	1.60	
375	187	188	96	1.63	
415	171	163	88	1.75	
363	122	158	73	1.72	
350	121	208	69	1.88	
321	160	180	88	2.06	
236	135	177	84	2.14	
285	108	168	77	2.06	
259	124	159	84	1.90	
16	9	10	7	1.89	
18	10	14	6	2.08	
19	12	14	7	1.95	
30	2	13	7	1.66	
26	10	10	7	1.75	
21	9	18	7	1.80	
28	13	10	8	1.96	
23	19	10	8	1.82	
20	11	17	7	1.90	
14	10	15	5	2.06	
22	6	11	7	1.88	
22	13	17	8	2.05	

附表七 進出港貨物國輪外輪承運量

單位：公噸

年 (月) 別 Year and Month	總		計	
	Total			
	國內		國外	
	Domestic		Foreign	
	國輪	外輪	國輪	外輪
	Domestic V.	Foreign V.	Domestic V.	Foreign V.
2015	617,735	199,368	2,068,879	70,420,807
2016	541,625	99,815	2,143,071	69,745,119
2017	460,980	198,606	2,090,730	68,637,358
2018	626,806	154,827	1,903,033	71,563,121
2019	630,499	50,773	2,146,246	68,763,907
2020	474,455	39,802	1,876,882	58,867,528
2021	770,546	58,956	1,781,438	62,002,321
2022	719,195	32,703	2,081,775	61,961,904
2023	517,174	12,493	1,707,217	59,093,211
2024	455,651	4,278	1,438,923	57,451,205
2025	392,783	-	1,669,050	59,093,269
一月(Jan.)	22,766	-	140,047	4,708,047
二月(Feb.)	28,423	-	117,169	4,211,291
三月(Mar.)	38,552	-	146,350	5,103,607
四月(Apr.)	65,488	-	126,000	4,428,378
五月(May)	9,887	-	175,000	4,894,890
六月(June)	14,773	-	113,000	5,408,537
七月(July.)	50,474	-	159,000	5,264,667
八月(Aug.)	25,105	-	180,005	5,375,944
九月(Sep.)	60,038	-	140,000	5,385,717
十月(Oct.)	5,200	-	90,479	4,365,483
十一月(Nov.)	40,933	-	141,000	4,394,738
十二月(Dec.)	31,144	-	141,000	5,551,970

資料來源：麥寮工業區專用港管理股份有限公司

**Table 7. Tonnage of Imports & Exports Carried by Domestic and Foreign Vessels**

Unit : M.T.

進		港		出		港	
Import				Export			
國內		國外		國內		國外	
Domestic		Foreign		Domestic		Foreign	
國輪	外輪	國輪	外輪	國輪	外輪	國輪	外輪
Domestic V.	Foreign V.	Domestic V.	Foreign V.	Domestic V.	Foreign V.	Domestic V.	Foreign V.
135,205	23,281	-	50,413,909	482,530	176,087	2,068,879	20,006,898
65,725	-	-	49,670,771	475,900	99,815	2,143,071	20,074,348
92,940	-	5,491	48,982,140	368,040	198,606	2,085,239	19,655,218
97,381	-	-	50,296,829	529,425	154,827	1,903,033	21,266,292
107,213	-	-	48,416,804	523,286	50,773	2,146,246	20,347,103
16,340	-	-	43,271,841	458,115	39,802	1,876,882	15,595,687
76,009	-	-	45,480,421	694,537	58,956	1,781,438	16,521,900
43,339	-	35,847	44,406,082	675,856	32,703	2,045,928	17,555,822
120,366	1,429	51,928	42,965,694	396,808	11,064	1,655,289	16,127,517
164,409	-	25,834	41,783,037	291,242	4,278	1,413,089	15,668,168
90,698	-	15,329	41,764,796	302,085	-	1,653,721	17,328,473
12,591	-	-	3,057,661	10,175	-	140,047	1,650,386
10,010	-	-	2,817,201	18,413	-	117,169	1,394,090
-	-	2,850	3,621,650	38,552	-	143,500	1,481,957
19,020	-	-	3,334,083	46,468	-	126,000	1,094,295
-	-	6,000	3,714,669	9,887	-	169,000	1,180,221
9,999	-	-	3,694,580	4,774	-	113,000	1,713,957
-	-	-	3,644,779	50,474	-	159,000	1,619,888
9,516	-	-	3,854,916	15,589	-	180,005	1,521,028
9,528	-	-	3,917,295	50,510	-	140,000	1,468,422
-	-	6,479	3,240,173	5,200	-	84,000	1,125,310
9,551	-	-	3,082,886	31,382	-	141,000	1,311,852
10,483	-	-	3,784,903	20,661	-	141,000	1,767,067

## 附表八 進 港 貨 物 （地區別）

單位：公噸

年 (月) 別 Year and Month	國內					
	總 計 Total	小 計 Sub Total	花 蓮 Hualien	蘇 澳 Suauo	高 雄 Kaohsiung	其 他 Others
2015	50,572,391	158,486	-	-	135,205	23,281
2016	49,736,498	65,725	-	-	65,725	-
2017	49,080,576	92,940	-	-	92,940	-
2018	50,394,205	97,381	-	-	97,381	-
2019	48,524,018	107,213	-	-	107,213	-
2020	43,288,186	16,340	-	-	16,340	-
2021	45,556,432	76,009	-	-	76,009	-
2022	44,485,266	43,339	-	-	43,339	-
2023	43,139,419	121,795	-	-	121,795	-
2024	41,973,282	164,409	-	-	164,409	-
2025	41,870,827	90,698	-	-	90,698	-
一 月(Jan.)	3,070,252	12,591	-	-	12,591	-
二 月(Feb.)	2,827,212	10,010	-	-	10,010	-
三 月(Mar.)	3,624,500	-	-	-	-	-
四 月(Apr.)	3,353,102	19,020	-	-	19,020	-
五 月(May)	3,720,670	-	-	-	-	-
六 月(June)	3,704,580	9,999	-	-	9,999	-
七 月(July.)	3,644,780	-	-	-	-	-
八 月(Aug.)	3,864,432	9,516	-	-	9,516	-
九 月(Sep.)	3,926,824	9,528	-	-	9,528	-
十 月(Oct.)	3,246,652	-	-	-	-	-
十一月(Nov.)	3,092,437	9,551	-	-	9,551	-
十二月(Dec.)	3,795,386	10,483	-	-	10,483	-

資料來源：麥寮工業區專用港管理股份有限公司

**Table 8. Tonnage of Imports (by Region)**

Unit : M.T.

小計	國				外					
	沙烏地阿拉伯	澳洲	科威特	中國大陸	伊 朗	阿 曼	阿拉伯聯合大公國	印尼	伊拉克	其他
Sub Total	Saudi arabia	Australia	Kuwait	China mainlan	Iran	Oman	UAE	Indonesia	Iraq	Others
50,413,905	10,004,770	8,668,361	7,811,410	94,240	350,792	2,767,536	2,509,008	4,833,800	3,518,323	9,855,665
49,670,773	8,019,463	10,413,078	5,526,254	48,979	999,763	2,077,558	2,634,901	1,103,233	1,383,747	17,463,797
48,987,636	7,103,741	7,897,728	5,950,541	85,711	1,488,929	2,610,695	2,011,424	646,838	2,158,084	19,033,945
50,296,824	9,959,281	6,550,210	7,972,094	81,480	1,231,244	3,025,581	2,516,941	483,013	3,421,218	15,055,762
48,416,805	8,440,705	7,722,566	5,719,807	68,352	-	2,383,988	2,217,623	423,097	969,587	20,471,080
43,271,846	7,422,317	5,024,203	4,949,955	43,060	-	938,111	1,570,418	460,517	1,973,503	20,889,762
45,480,423	7,453,422	7,185,534	5,919,751	88,472	-	1,862,512	3,268,705	171,253	1,178,876	18,351,898
44,441,927	10,110,040	6,849,032	7,852,359	148,283	-	2,893,889	3,004,451	1,742,834	957,750	10,883,289
43,017,624	9,911,462	7,336,496	7,389,065	206,943	-	3,296,213	805,628	770,356	740,703	12,560,758
41,808,873	8,770,834	6,888,357	5,164,735	326,813	-	3,330,557	909,304	711,765	680,980	15,025,528
41,780,129	8,015,806	6,695,240	4,356,518	31,525	-	3,064,808	2,453,191	1,499,724	540,307	15,123,010
3,057,661	589,738	404,924	419,409	2,207	-	542,312	134,009	152,413	134,228	678,421
2,817,202	450,409	278,186	406,282	2,979	-	13,250	134,554	6,042	-	1,525,500
3,624,500	845,556	273,690	409,117	2,151	-	263,981	134,491	222,700	-	1,472,814
3,334,082	688,440	301,480	141,858	1,936	-	588,177	-	75,605	134,306	1,402,280
3,720,670	837,804	524,309	132,086	1,545	-	534,663	135,881	82,946	-	1,471,436
3,694,581	290,732	-	634,242	1,487	-	10,105	394,545	7,000	-	2,356,470
3,644,780	842,780	751,496	271,458	2,261	-	272,507	222,783	242,234	136,367	902,894
3,854,916	713,173	554,355	771,545	2,096	-	16,000	137,842	381,213	-	1,278,692
3,917,296	904,188	938,942	203,083	1,709	-	271,992	546,681	222,910	-	827,791
3,246,652	457,860	1,171,983	138,109	8,630	-	264,941	258,190	9,506	135,406	802,027
3,082,886	545,008	569,821	272,215	2,648	-	274,880	79,074	15,005	-	1,324,235
3,784,903	850,118	926,054	557,114	1,876	-	12,000	275,141	82,150	-	1,080,450

## 附表九 出 港 貨 物 (地區別)

單位：公噸

年 (月) 別 Year and Month	國內						
	總 計 Total	Domestic					
		小 計 Sub Total	高 雄 Kaohsiung	台 北 Taipei	蘇 澳 Suao	金 門 Kin Men	其 他 Others
2015	22,734,392	658,618	129,827	132,267	336,029	-	60,495
2016	22,793,137	575,719	112,523	78,815	369,188	-	15,193
2017	22,307,097	566,644	95,960	150,889	286,775	-	33,020
2018	23,853,579	684,255	117,826	116,254	437,457	-	12,718
2019	23,067,405	574,056	155,908	20,594	396,771	-	783
2020	17,970,481	497,916	110,200	56,107	331,609	-	-
2021	19,056,829	753,493	106,369	102,114	495,346	-	49,664
2022	20,310,309	708,557	132,316	160,622	398,377	-	17,242
2023	18,190,683	407,874	193,753	80,045	102,386	-	31,690
2024	17,376,773	295,517	98,812	49,499	95,984	-	51,222
2025	19,284,278	302,085	160,682	57,030	16,000	-	68,373
一 月(Jan.)	1,800,608	10,175	10,175	-	-	-	-
二 月(Feb.)	1,529,673	18,414	-	10,414	8,000	-	-
三 月(Mar.)	1,664,010	38,552	-	5,165	-	-	33,387
四 月(Apr.)	1,266,763	46,468	33,318	5,150	8,000	-	-
五 月(May)	1,359,106	9,886	4,756	5,130	-	-	-
六 月(June)	1,831,729	4,774	4,774	-	-	-	-
七 月(July.)	1,829,362	50,474	40,195	10,279	-	-	-
八 月(Aug.)	1,716,622	15,589	10,410	5,179	-	-	-
九 月(Sep.)	1,658,931	50,510	15,524	-	-	-	34,986
十 月(Oct.)	1,214,510	5,200	5,200	-	-	-	-
十一 月(Nov.)	1,484,234	31,382	15,669	15,713	-	-	-
十二 月(Dec.)	1,928,730	20,661	20,661	-	-	-	-

資料來源：麥寮工業區專用港管理股份有限公司

**Table 9. Tonnage of Exports (by Region)**

Unit : M.T. Unit : M.T.

小計	國					外			
	新加坡	中國大陸	菲律賓	美國	澳洲	印尼	香港	越南	其他
Sub Total	Singapore	China mainland	Philippine	United States	Australia	Indonesia	Hong kong	Vietnam	Others
22,075,774	3,585,546	6,308,794	4,687,173	499,006	1,615,268	267,848	1,057,638	1,361,284	2,693,217
22,217,418	3,333,923	6,418,943	6,416,732	314,692	1,271,564	198,787	572,861	665,815	3,024,101
21,740,453	2,233,230	6,348,111	6,293,931	543,772	743,012	180,236	651,977	332,302	4,413,882
23,169,324	2,377,832	6,304,879	4,555,463	545,819	1,025,524	260,635	678,415	448,236	6,972,521
22,493,349	2,554,807	6,067,688	1,614,006	559,211	1,169,110	199,440	783,380	500,140	9,045,567
17,472,565	1,565,148	5,510,814	2,096,997	354,667	1,402,410	43,463	808,345	351,180	5,339,541
18,303,336	2,150,495	5,297,539	759,222	573,324	2,314,769	207,633	452,614	341,335	6,206,405
19,601,752	2,386,929	4,240,830	1,051,143	719,055	3,401,917	92,643	314,343	367,737	7,027,155
17,782,809	3,349,873	3,750,126	459,023	665,148	3,554,922	216,592	573,860	218,775	4,994,490
17,081,256	2,778,784	3,076,543	441,818	641,426	4,085,569	245,497	529,146	261,312	5,021,161
18,982,193	3,296,900	3,432,023	923,327	520,574	4,194,058	302,570	625,439	478,281	5,209,021
1,790,433	384,341	273,175	63,138	72,950	502,757	3,793	94,919	22,878	372,482
1,511,259	492,996	234,593	3,962	76,245	224,688	62,883	-	30,671	385,221
1,625,458	215,758	286,055	58,114	57,985	391,890	20,101	30,219	55,496	509,840
1,220,295	123,022	294,378	-	50,555	298,723	23,761	88,455	28,111	313,290
1,349,220	225,791	324,231	91,687	35,599	255,974	4,483	44,751	13,356	353,348
1,826,955	534,201	256,643	150,583	50,372	300,317	6,487	40,999	61,035	426,318
1,778,888	201,834	320,060	59,301	54,339	417,009	21,232	69,502	33,276	602,335
1,701,033	252,879	379,667	105,596	10,542	347,464	27,150	44,405	36,435	496,895
1,608,421	183,156	280,024	59,190	50,279	401,022	71,223	29,200	38,171	496,156
1,209,310	128,263	234,226	59,490	17,045	307,398	16,704	64,046	22,810	359,328
1,452,852	167,830	268,685	143,537	22,848	291,732	24,821	21,880	75,171	436,348
1,908,069	386,829	280,286	128,729	21,815	455,084	19,932	97,063	60,871	457,460

附表十 進 港 貨 物 分 類 (按 月)

單位：公噸

年 (月) 別 Year and Month	礦 產 品 Minerals						
	總 計 Total	煤 Coal & Coke	鐵 礦 砂 Iron Ore	土、石、 砂 礫 Clay, Stone, Sand & Gravel	硫 磺 Sulphur	粗 鹽 Salt	其 他 Others
2015	50,572,394	13,558,793	-	52,552	-	1,731,127	28,878
2016	49,736,497	12,524,145	-	-	-	1,829,768	19,797
2017	49,080,573	12,541,556	-	-	-	1,827,372	24,711
2018	50,394,210	12,122,105	-	-	-	1,986,205	23,144
2019	48,524,019	12,559,377	-	-	-	1,917,572	25,270
2020	43,288,181	11,522,923	-	-	-	1,841,966	24,132
2021	45,556,430	13,149,505	-	-	-	2,066,740	21,309
2022	44,485,269	11,227,066	-	-	-	1,845,683	26,035
2023	43,139,418	12,177,377	-	-	-	1,740,618	23,059
2024	41,973,281	11,944,128	-	-	-	1,834,172	17,069
2025	41,870,821	11,222,331	-	-	-	1,483,296	24,991
一 月(Jan.)	3,070,252	720,431	-	-	-	-	2,207
二 月(Feb.)	2,827,211	604,338	-	-	-	74,275	2,979
三 月(Mar.)	3,624,500	973,227	-	-	-	230,360	2,151
四 月(Apr.)	3,353,103	963,756	-	-	-	-	1,936
五 月(May)	3,720,669	1,126,933	-	-	-	238,733	1,545
六 月(June)	3,704,579	1,041,207	-	-	-	76,070	1,487
七 月(July.)	3,644,779	951,296	-	-	-	80,200	2,261
八 月(Aug.)	3,864,432	935,568	-	-	-	81,650	2,096
九 月(Sep.)	3,926,823	1,395,205	-	-	-	155,470	1,655
十 月(Oct.)	3,246,652	1,091,755	-	-	-	235,378	2,151
十一 月(Nov.)	3,092,437	569,821	-	-	-	79,700	2,648
十二 月(Dec.)	3,795,386	848,794	-	-	-	231,460	1,876

資料來源：麥寮工業區專用港管理股份有限公司

Table 10. Classification of Imports (by Month)

Unit : M.T.

非金屬礦物製品 Non-metalic Mineral Products			
汽、柴、燃料油	原油	輕油	其他
Gasoline, Diesel, Fuel Oil	Grude Oil	Naphtha	Others
-	24,762,167	7,658,804	814,277
-	24,866,477	6,716,468	1,347,699
-	24,025,722	7,500,819	937,423
-	25,577,956	7,272,525	1,417,143
-	24,035,651	6,377,752	1,505,845
-	19,627,167	7,241,753	1,117,667
-	19,364,431	8,851,925	243,419
-	22,528,968	6,867,490	507,615
-	21,977,689	4,710,075	878,833
-	20,689,508	4,436,748	1,262,447
-	22,549,390	4,662,939	780,774
-	1,918,867	345,929	-
-	1,501,969	451,112	66,389
-	1,900,692	419,371	40,002
-	1,882,673	415,936	-
-	1,884,609	276,177	113,209
-	1,900,187	578,137	36,516
-	2,159,675	305,061	45,865
-	2,071,814	487,627	173,771
-	1,925,944	321,096	44,104
-	1,336,609	347,296	132,726
-	1,863,250	379,793	83,185
-	2,203,101	335,404	45,007

附表十 進 港 貨 物 分 類 (按 月) (續 完)

單位：公噸

年 (月) 別 Year and Month	化 學 品 Chemical Products			基 本 金 屬 Basic Metal	
	肥 料 Fertilizer	動 植 物 性 油 脂 Animal & Vegetable Grease	其 他 Others	鋼 鐵 Iron & Steel	廢 鐵 Iron & Steel Scrap
2015	-	-	1,501,093	-	-
2016	-	-	1,835,779	-	-
2017	-	-	1,776,030	-	-
2018	-	-	1,897,192	-	-
2019	-	-	1,984,258	-	-
2020	-	-	1,838,811	-	-
2021	-	-	1,782,156	-	-
2022	-	-	1,436,173	-	-
2023	-	-	1,629,668	-	-
2024	-	-	1,788,288	-	-
2025	-	-	1,139,640	-	-
一 月(Jan.)	-	-	82,819	-	-
二 月(Feb.)	-	-	126,149	-	-
三 月(Mar.)	-	-	58,697	-	-
四 月(Apr.)	-	-	88,802	-	-
五 月(May)	-	-	79,463	-	-
六 月(June)	-	-	70,975	-	-
七 月(July.)	-	-	100,421	-	-
八 月(Aug.)	-	-	111,905	-	-
九 月(Sep.)	-	-	83,295	-	-
十 月(Oct.)	-	-	98,508	-	-
十一 月(Nov.)	-	-	111,501	-	-
十二 月(Dec.)	-	-	127,106	-	-

資料來源：麥寮工業區專用港管理股份有限公司

**Table 10. Classification of Imports (by Month)**

Unit : M.T.

基本金屬 Basic Metal		金屬製品 Metal Products			其他什貨
其他 Others	機件 Grude Oil	電器機械器材 Electrical Machinery, Apparatus	其他 Others	其他什貨 General Merchandise	
-	-	-	-	464,703	
-	1,097	-	-	595,267	
-	-	-	330	446,610	
-	-	-	-	97,940	
-	259	-	-	118,035	
1,468	-	-	354	71,940	
-	441	-	-	76,504	
-	-	-	-	46,241	
-	399	-	271	1,429	
-	922	-	-	-	
-	54	-	7,406	-	
-	-	-	-	-	
-	-	-	-	-	
-	-	-	-	-	
-	-	-	-	-	
-	-	-	-	-	
-	-	-	-	-	
-	-	-	-	-	
-	-	-	-	-	
-	54	-	-	-	
-	-	-	2,228	-	
-	-	-	2,539	-	
-	-	-	2,638	-	

## 附表十一 進 港 貨 物 分 類 (按碼頭)

單位：公噸

年 (月) 別 Year and Month	礦 產 品 Minerals						
	總 計 Total	煤 Coal & Coke	鐵 礦 砂 Iron Ore	土、石、砂 礫 Clay, Stone, Sand & Gravel	硫 磺 Sulphur	粗 鹽 Salt	其 他 Others
2015	50,572,395	13,558,793	-	52,552	-	1,731,127	28,878
2016	49,736,494	12,524,145	-	-	-	1,829,768	19,797
2017	49,080,572	12,541,556	-	-	-	1,827,372	24,711
2018	50,394,209	12,122,105	-	-	-	1,986,205	23,146
2019	48,524,018	12,559,377	-	-	-	1,917,572	25,270
2020	43,288,184	11,522,923	-	-	-	1,841,966	24,132
2021	44,325,087	12,871,238	-	-	-	1,912,699	21,309
2022	44,485,269	11,227,066	-	-	-	1,845,683	26,035
2023	43,139,418	12,177,377	-	-	-	1,740,618	23,059
2024	41,973,281	11,944,128	-	-	-	1,834,172	17,068
2025	41,870,821	11,222,331	-	-	-	1,483,296	24,991
東1碼頭	32,451	-	-	-	-	-	24,991
東2碼頭	2,896,113	1,412,817	-	-	-	1,483,296	-
東3碼頭	3,906,420	3,906,420	-	-	-	-	-
東4碼頭	5,903,094	5,903,094	-	-	-	-	-
東5碼頭	31,947	-	-	-	-	-	-
東6碼頭	46,341	-	-	-	-	-	-
東7碼頭	589,608	-	-	-	-	-	-
東8碼頭	975,421	-	-	-	-	-	-
東9N/S碼頭	47,799	-	-	-	-	-	-
東10N/S碼頭	158,010	-	-	-	-	-	-
北1碼頭	437,208	-	-	-	-	-	-
北2碼頭	415,710	-	-	-	-	-	-
北5碼頭	-	-	-	-	-	-	-
北6碼頭	-	-	-	-	-	-	-
北7碼頭	7,869	-	-	-	-	-	-
西1碼頭	307,642	-	-	-	-	-	-
西2碼頭	7,788,947	-	-	-	-	-	-
西3碼頭	18,326,240	-	-	-	-	-	-

資料來源：麥寮工業區專用港管理股份有限公司



附表十一 進 港 貨 物 分 類 (按碼頭) (續完)

單位：公噸

年 (月) 別 Year and Month	化 學 品 Chemical Products			基 本 金 屬 Basic Metal	
	肥 料 Fertilizer	動 植 物 性 油 脂 Animal & Vegetable Grease	其 他 Others	鋼 鐵 Iron & Steel	廢 鐵 Iron & Steel Scrap
2015	-	-	1,501,093	-	-
2016	-	-	1,835,780	-	-
2017	-	-	1,776,029	-	-
2018	-	-	1,897,192	-	-
2019	-	-	1,984,258	-	-
2020	-	-	1,838,814	-	-
2021	-	-	1,730,987	-	-
2022	-	-	1,436,171	-	-
2023	-	-	1,629,668	-	-
2024	-	-	1,788,289	-	-
2025	-	-	1,139,640	-	-
東1碼頭	-	-	-	-	-
東2碼頭	-	-	-	-	-
東3碼頭	-	-	-	-	-
東4碼頭	-	-	-	-	-
東5碼頭	-	-	31,947	-	-
東6碼頭	-	-	46,341	-	-
東7碼頭	-	-	-	-	-
東8碼頭	-	-	-	-	-
東9N/S碼頭	-	-	47,799	-	-
東10N/S碼頭	-	-	158,010	-	-
北1碼頭	-	-	437,208	-	-
北2碼頭	-	-	410,466	-	-
北5碼頭	-	-	-	-	-
北6碼頭	-	-	-	-	-
北7碼頭	-	-	7,869	-	-
西1碼頭	-	-	-	-	-
西2碼頭	-	-	-	-	-
西3碼頭	-	-	-	-	-

資料來源：麥寮工業區專用港管理股份有限公司



## 附表十二 出 港 貨 物 分 類 (按 月)

單位：公噸

年 (月) 別 Year and Month	礦 產 品 Minerals			
	總 計 Total	煤 Coal & Coke	鐵 礦 砂 Iron Ore	土、石、砂礫 Clay, Stone, Sand & Gravel
2015	22,734,392	-	-	-
2016	22,793,134	-	-	-
2017	22,307,096	-	-	-
2018	23,853,575	-	-	-
2019	23,067,411	-	-	-
2020	17,970,484	-	-	-
2021	19,056,830	-	-	-
2022	20,310,308	-	-	-
2023	18,190,682	-	-	-
2024	17,376,775	-	-	-
2025	19,284,279	-	-	-
一 月(Jan.)	1,800,608	-	-	-
二 月(Feb.)	1,529,673	-	-	-
三 月(Mar.)	1,664,008	-	-	-
四 月(Apr.)	1,266,762	-	-	-
五 月(May)	1,359,108	-	-	-
六 月(June)	1,831,730	-	-	-
七 月(July.)	1,829,363	-	-	-
八 月(Aug.)	1,716,622	-	-	-
九 月(Sep.)	1,658,933	-	-	-
十 月(Oct.)	1,214,510	-	-	-
十一 月(Nov.)	1,484,234	-	-	-
十二 月(Dec.)	1,928,728	-	-	-

資料來源：麥寮工業區專用港管理股份有限公司

**Table 12. Classification of Imports (by Month)**

Unit : M.T.

礦 產 品 Minerals			非 金 屬 礦 物 製 品 Non-metallic Mineral Products	
硫 磺 Sulphur	粗 鹽 Salt	其 他 Others	汽、柴、燃料油 Gasoline, Diesel, Fuel Oil	其 他 Others
350,500	-	-	10,114,860	2,271,965
349,235	-	-	10,078,384	2,179,049
264,673	-	-	9,444,196	2,234,432
268,989	-	-	10,693,057	2,246,278
340,036	-	-	10,067,348	3,017,098
258,486	-	-	7,638,571	2,025,153
206,990	-	-	7,352,363	2,144,991
273,487	-	-	9,200,726	2,306,314
309,315	-	-	10,556,518	2,193,582
209,269	-	-	10,097,038	2,023,697
230,391	-	-	11,430,186	2,287,455
29,899	-	-	1,160,334	213,268
-	-	-	914,265	241,761
32,998	-	-	917,995	199,475
16,500	-	-	634,198	152,247
16,498	-	-	715,456	173,599
15,999	-	-	1,261,674	184,474
16,001	-	-	1,067,128	179,276
16,499	-	-	1,062,107	202,248
32,998	-	-	969,240	200,008
			734,381	145,429
36,498			806,406	190,729
16,498			1,187,002	204,941

附表十二 出 港 貨 物 分 類 (按 月) (續 完)

單位：公噸

年 (月) 別 Year and Month	化 學 品 Chemical Products			基 本 金 屬 Basic Metal	
	肥 料 Fertilizer	動 植 物 性 油 脂 Animal & Vegetable Grease	其 他 Others	鋼 鐵 Iron & Steel	廢 鐵 Iron & Steel Scrap
2015	-	-	7,148,852	-	-
2016	-	-	7,148,672	-	-
2017	-	-	7,369,691	-	-
2018	-	-	7,545,656	-	-
2019	-	-	7,186,520	-	-
2020	-	-	6,757,509	-	-
2021	-	-	7,324,120	-	-
2022	-	-	6,555,972	-	-
2023	-	-	5,080,027	-	-
2024	-	-	5,027,547	-	-
2025	-	-	5,333,728	-	-
一 月(Jan.)	-	-	397,106	-	-
二 月(Feb.)	-	-	373,647	-	-
三 月(Mar.)	-	-	513,540	-	-
四 月(Apr.)	-	-	463,762	-	-
五 月(May)	-	-	453,555	-	-
六 月(June)	-	-	369,583	-	-
七 月(July.)	-	-	566,050	-	-
八 月(Aug.)	-	-	434,210	-	-
九 月(Sep.)	-	-	456,686	-	-
十 月(Oct.)	-	-	334,700	-	-
十一 月(Nov.)	-	-	450,601	-	-
十二 月(Dec.)	-	-	520,288	-	-

資料來源：麥寮工業區專用港管理股份有限公司

**Table 12. Classification of Imports (by Month)**

Unit : M.T.

基本金屬 Basic Metal		金屬製品 Metal Products			其他什貨
其他 Others	機件 Machinery	電器機械器材 Electrical Machinery, Apparatus	其他 Others	其他什貨 General Merchandise	
-	7,271	-	-	2,840,944	
-	3,204	-	-	3,034,590	
-	1,002	-	-	2,993,102	
8,089	-	-	-	3,091,506	
-	1,198	-	-	2,455,211	
2,500	-	-	-	1,288,265	
769	-	-	-	2,027,597	
767	-	-	-	1,973,043	
353	-	-	-	50,887	
-	19,225	-	-	-	
55	-	-	2,465	-	
-	-	-	-	-	
-	-	-	-	-	
-	-	-	-	-	
55	-	-	-	-	
-	-	-	-	-	
-	-	-	-	-	
-	-	-	907	-	
-	-	-	1,558	-	
-	-	-	-	-	
-	-	-	-	-	
-	-	-	-	-	
-	-	-	-	-	

附表十三 出 港 貨 物 分 類 (按碼頭)

單位：計費噸

年 (月) 別	總 計	礦 產 品					非金屬礦物製品	
		煤	土、石、 砂礫	硫 磺	粗 鹽	其 他	汽、柴、燃料 油	其 他
Year and Month	Total	Coal & Coke	Clay, Stone, Sand & Gravel	Sulphur	Salt	Others	Gasoline, Diesel, Fuel Oil	Others
2015	22,734,391	-	-	350,500	-	-	10,114,860	2,271,966
2016	22,793,136	-	-	349,235	-	-	10,078,386	2,179,049
2017	22,307,099	-	-	264,673	-	-	9,444,197	2,234,433
2018	23,853,576	-	-	268,990	-	-	10,693,056	2,246,279
2019	23,067,407	-	-	340,036	-	-	10,067,347	3,017,098
2020	17,970,486	-	-	258,486	-	-	7,638,571	2,025,154
2021	19,056,829	-	-	206,989	-	-	7,352,364	2,144,990
2022	20,310,308	-	-	273,487	-	-	9,200,726	2,306,314
2023	18,190,682	-	-	309,315	-	-	10,556,517	2,193,582
2024	17,376,775	-	-	209,268	-	-	10,097,038	2,023,699
2025	19,284,279	-	-	230,391	-	-	11,430,186	2,287,455
東1碼頭	232,910	-	-	230,391	-	-	-	-
東2碼頭	596,800	-	-	-	-	-	-	-
東3碼頭	-	-	-	-	-	-	-	-
東4碼頭	-	-	-	-	-	-	-	-
東5碼頭	708,832	-	-	-	-	-	-	708,832
東6碼頭	1,834,501	-	-	-	-	-	-	363,292
東7碼頭	4,024,670	-	-	-	-	-	3,354,808	351,667
東8碼頭	3,122,613	-	-	-	-	-	2,873,201	249,412
東9N/S碼頭	719,662	-	-	-	-	-	2,925	237,979
東10N/S碼頭	999,555	-	-	-	-	-	-	14,784
北1碼頭	627,556	-	-	-	-	-	-	-
北2碼頭	451,927	-	-	-	-	-	-	61,224
北5碼頭	223,239	-	-	-	-	-	-	168,884
北6碼頭	124,356	-	-	-	-	-	-	-
北7碼頭	287,025	-	-	-	-	-	-	-
西1碼頭	1,589,177	-	-	-	-	-	1,514,152	75,025
西2碼頭	3,741,456	-	-	-	-	-	3,685,101	56,355
西3碼頭	-	-	-	-	-	-	-	-

資料來源：麥寮工業區專用港管理股份有限公司

**Table 13. Classification of Imports (by Wharf)**

Unit : Revenue Ton

化學品 Chemical Products			基本金屬 Basic Metal			金屬製品 Metal Products			其他什貨
肥料 Fertilizer	動植物性 油脂 Animal & Vegetable Grease	其他 Others	鋼鐵 Iron & Steel	廢鐵 Iron & Steel Scrap	其他 Others	機件 Machinery	電器機械器材 Electrical Machinery, Apparatur	其他 Others	General Merchandise
-	-	7,148,850	-	-	-	7,272	-	-	2,840,943
-	-	7,148,671	-	-	-	3,204	-	-	3,034,591
-	-	7,369,693	-	-	-	1,002	-	-	2,993,101
-	-	7,545,657	-	-	8,089	-	-	-	3,091,505
-	-	7,186,518	-	-	-	-	1,198	-	2,455,210
-	-	6,757,509	-	-	2,500	-	-	-	1,288,266
-	-	7,324,121	-	-	769	-	-	-	2,027,596
-	-	6,555,972	-	-	767	-	-	-	1,973,042
-	-	5,080,027	-	-	353	-	-	-	50,887
-	-	5,027,546	-	-	-	19,225	-	-	-
-	-	5,333,728	-	-	55	-	-	2,465	-
-	-	-	-	-	55	-	-	2,465	-
-	-	596,800	-	-	-	-	-	-	-
-	-	-	-	-	-	-	-	-	-
-	-	-	-	-	-	-	-	-	-
-	-	-	-	-	-	-	-	-	-
-	-	1,471,209	-	-	-	-	-	-	-
-	-	318,194	-	-	-	-	-	-	-
-	-	-	-	-	-	-	-	-	-
-	-	-	-	-	-	-	-	-	-
-	-	478,758	-	-	-	-	-	-	-
-	-	984,771	-	-	-	-	-	-	-
-	-	627,556	-	-	-	-	-	-	-
-	-	390,703	-	-	-	-	-	-	-
-	-	54,354	-	-	-	-	-	-	-
-	-	124,356	-	-	-	-	-	-	-
-	-	287,025	-	-	-	-	-	-	-
-	-	-	-	-	-	-	-	-	-
-	-	-	-	-	-	-	-	-	-
-	-	-	-	-	-	-	-	-	-

## 二、棧埠

附表十四 本港裝卸業者營運實績(依公司別)

單位：計費噸

年(月)別	總計	台塑公司	南亞公司	台化公司	台塑石化	麥寮汽電
Year and Month	Total	Formosa Plastics Corp.	Nan Ya Plastics Corp.	Formosa Chemicals & Fiber Corp.	Formosa Petro Chemical Corp	Mailiao Power Corp.
2015	73,379,445	3,551,263	1,633,504	3,211,487	57,913,494	5,630,413
2016	72,079,798	3,695,004	1,605,161	3,598,448	57,204,527	4,585,413
2017	71,361,993	4,181,042	1,708,389	3,392,048	55,607,842	5,109,640
2018	74,390,735	4,180,554	1,582,907	3,667,362	59,162,228	4,353,765
2019	72,191,556	4,467,322	1,572,861	3,165,047	57,512,698	4,082,682
2020	61,296,121	4,010,242	1,547,089	3,026,521	46,965,393	4,255,999
2021	64,864,877	4,577,699	1,531,846	3,235,075	49,837,971	4,312,190
2022	64,750,493	4,274,186	684,244	2,824,467	51,507,536	4,151,911
2023	61,174,086	4,108,061	205,947	2,765,920	48,648,554	4,477,631
2024	59,618,704	4,122,033	260,081	3,085,958	47,338,978	3,836,302
2025	60,612,213	3,795,372	763,173	2,243,164	50,091,822	2,835,731
一月(Jan.)	5,003,973	319,831	56,344	159,746	4,105,410	308,108
二月(Feb.)	4,779,504	270,275	40,900	187,159	4,042,166	165,099
三月(Mar.)	5,013,876	464,428	71,394	171,236	4,057,384	161,193
四月(Apr.)	4,811,220	244,995	76,893	150,534	3,750,262	522,428
五月(May)	4,685,616	402,346	89,397	161,286	3,664,801	288,748
六月(June)	4,853,864	115,752	54,380	173,903	4,321,203	88,263
七月(July.)	6,251,414	413,597	89,446	185,496	5,223,962	268,051
八月(Aug.)	5,293,559	166,854	56,368	269,368	4,384,763	343,415
九月(Sep.)	4,846,128	227,990	71,284	182,200	4,313,071	-
十月(Oct.)	4,958,096	384,654	49,000	183,580	3,869,652	423,572
十一月(Nov.)	5,096,288	424,500	58,769	198,603	4,062,566	266,854
十二月(Dec.)	5,018,675	360,149	49,000	220,054	4,296,582	-

資料來源：麥寮工業區專用港管理股份有限公司

**二、Stevedoring&Warehousing**  
**Table 14. Volume of Cargoes Handled by Stevedoring & Warehousing Companies**

Unit : Revenue Ton

中塑油品	大連化工	長春樹脂	南中石化	台塑重工	台塑旭纖	台灣醋酸	台塑光電	其他
Simosa Oil Corp Ltd.	Dairen Chemical Corp.	Chang Chun Plastics Corp.	Nan Chung Petrochemical Corp.	Formosa Heavy Industries Corp.	Formosa Asahi Spandex CO. Ltd	Formosa Bp Chemicals Corp.	Formosa Plasma Display Corp.	Others
332,560	231,222	464,312	100,389	11,278	-	299,523	-	-
336,041	342,239	417,767	96,543	5,450	-	193,205	-	-
243,191	395,611	446,757	107,678	641	-	169,154	-	-
231,505	356,949	445,017	153,645	8,089	-	248,714	-	-
261,463	348,627	351,606	152,053	13,038	-	264,159	-	-
235,807	306,917	429,730	104,543	60,526	-	353,354	-	-
189,184	314,397	497,325	102,795	39,513	-	226,882	-	-
207,168	298,812	433,384	78,632	10,379	-	279,774	-	-
216,480	253,938	187,154	32,626	33,667	-	244,108	-	-
182,788	153,187	256,722	-	19,747	-	362,909	-	-
228,194	116,966	260,981	-	2,520	-	274,289	-	-
21,982	5,229	9,180	-	-	-	18,144	-	-
8,807	4,523	28,921	-	-	-	31,653	-	-
23,046	5,089	34,261	-	-	-	25,845	-	-
12,931	15,503	5,908	-	55	-	31,711	-	-
11,029	3,805	35,519	-	-	-	28,685	-	-
35,085	10,100	29,993	-	-	-	25,186	-	-
18,285	9,286	26,386	-	907	-	15,999	-	-
13,030	6,979	23,107	-	1,558	-	28,118	-	-
27,088	11,465	12,976	-	-	-	54	-	-
8,687	14,953	15,049	-	-	-	8,948	-	-
29,187	22,875	20,611	-	-	-	12,323	-	-
19,037	7,159	19,070	-	-	-	47,625	-	-

## 附表十五 裝卸貨物噸量

單位：計費噸

年(月)別 Year and Month	裝卸貨物 Loading							
	總計 Total	合計 Total	什貨 General Cargoes	管道 Pipe	貨櫃 Containers	散貨 Bulk Cargoes	其他散裝 Others Cargoes in Bulk	其他 Others
2015	73,379,445	22,562,220	26,271	21,517,969	-	-	1,017,980	-
2016	72,079,798	22,759,464	15,399	21,851,918	-	-	892,147	-
2017	71,361,993	22,143,025	3,641	21,293,150	-	-	846,234	-
2018	74,390,735	23,766,132	23,824	22,805,580	-	-	936,728	-
2019	72,191,556	22,305,298	96,583	21,130,257	-	-	1,078,458	-
2020	61,296,121	17,775,625	94,236	16,798,335	-	-	883,054	-
2021	64,864,877	19,089,059	98,466	18,017,997	-	-	972,596	-
2022	64,750,493	20,059,156	104,973	19,010,379	-	-	943,804	-
2023	61,174,086	18,526,627	33,667	17,559,170	-	-	933,790	-
2024	59,618,704	17,595,204	19,747	16,788,267	-	-	787,190	-
2025	60,612,213	18,559,358	30,000	17,577,660	-	-	951,698	-
一月(Jan.)	5,003,973	1,462,747	27,480	1,364,556	-	-	70,711	-
二月(Feb.)	4,779,504	1,643,653	-	1,549,706	-	-	93,947	-
三月(Mar.)	5,013,876	1,552,167	-	1,482,858	-	-	69,309	-
四月(Apr.)	4,811,220	1,365,563	55	1,281,002	-	-	84,506	-
五月(May)	4,685,616	1,190,981	-	1,122,158	-	-	68,823	-
六月(June)	4,853,864	1,866,845	-	1,819,397	-	-	47,448	-
七月(July.)	6,251,414	1,767,271	907	1,655,664	-	-	110,699	-
八月(Aug.)	5,293,559	1,704,650	1,558	1,622,048	-	-	81,044	-
九月(Sep.)	4,846,128	1,636,274	-	1,541,230	-	-	95,044	-
十月(Oct.)	4,958,096	1,199,168	-	1,120,700	-	-	78,468	-
十一月(Nov.)	5,096,288	1,458,741	-	1,378,996	-	-	79,745	-
十二月(Dec.)	5,018,675	1,711,299	-	1,639,344	-	-	71,955	-

資料來源：麥寮工業區專用港管理股份有限公司

**Table 15. Volume of Cargoes Handled**

Unit : Revenue Ton

合 計	卸				貨		
	散貨-工鹽	散貨-燃煤	其他散裝	管 道	什 貨	貨 櫃	其 他
Total	Salt	Coal	Other Cargoes in Bulk	Pipe	General Cargoes	Containers	Others
50,817,225	1,652,327	14,029,669	-	35,106,397	28,832	-	-
49,320,334	1,830,848	11,933,508	-	35,536,149	19,829	-	-
49,218,968	1,904,496	12,611,344	-	34,679,420	23,708	-	-
50,624,603	1,907,364	12,886,588	-	35,804,324	26,327	-	-
49,886,258	1,988,390	12,122,865	-	35,740,420	34,583	-	-
43,520,496	1,839,580	11,796,146	-	29,820,620	64,150	-	-
45,775,818	2,068,830	13,143,554	-	30,536,952	26,482	-	-
44,691,337	1,762,173	11,362,458	-	31,540,298	26,408	-	-
42,647,459	1,820,076	12,202,281	-	28,601,334	23,768	-	-
42,023,499	1,761,625	11,800,376	-	28,444,036	17,462	-	-
42,052,855	1,552,333	11,286,980	-	29,181,079	32,462	-	-
3,541,226	149,589	996,997	-	2,392,432	2,208	-	-
3,135,851	74,278	608,285	-	2,450,318	2,970	-	-
3,461,709	230,366	1,057,770	-	2,171,423	2,150	-	-
3,445,657	-	901,725	-	2,541,998	1,934	-	-
3,494,636	238,737	1,178,931	-	2,075,423	1,545	-	-
2,987,019	-	392,155	-	2,593,376	1,488	-	-
4,484,143	156,274	1,478,827	-	2,846,760	2,282	-	-
3,588,909	81,652	919,297	-	2,585,863	2,098	-	-
3,209,854	-	747,693	-	2,460,457	1,704	-	-
3,758,928	235,705	1,679,061	-	1,839,780	4,381	-	-
3,637,547	234,857	833,929	-	2,563,571	5,189	-	-
3,307,376	150,875	492,310	-	2,659,677	4,514	-	-

## 附表十六 裝卸貨物效率

年(月)別 Year and Month	合 計 Total		散 貨-工 鹽 Bulk Cargoes		散 貨-燃 煤 Bulk Cargoes		其 他 散 裝 Other Cargoes in Bul	
	裝量/工時	卸量/工時	裝量/工時	卸量/工時	裝量/工時	卸量/工時	裝量/工時	卸量/工時
	V./H.	V./H.	V./H.	V./H.	V./H.	V./H.	V./H.	V./H.
2015	464	864	-	752	-	1,692	257	-
2016	479	852	-	765	-	1,590	256	-
2017	485	852	-	726	-	1,582	258	-
2018	491	855	-	757	-	1,630	270	-
2019	472	855	-	749	-	1,616	301	-
2020	466	837	-	739	-	1,628	275	-
2021	463	831	-	747	-	1,615	288	-
2022	472	850	-	725	-	1,612	284	-
2023	476	847	-	735	-	1,654	291	-
2024	488	866	-	725	-	1,626	275	-
2025	493	835	-	727	-	1,640	276	-
一 月(Jan.)	462	827	-	731	-	1,652	280	-
二 月(Feb.)	500	829	-	732	-	1,643	271	-
三 月(Mar.)	498	830	-	728	-	1,645	277	-
四 月(Apr.)	457	862	-	-	-	1,640	275	-
五 月(May)	498	828	-	730	-	1,643	277	-
六 月(June)	500	861	-	-	-	1,639	275	-
七 月(July.)	505	823	-	725	-	1,630	280	-
八 月(Aug.)	501	826	-	728	-	1,641	273	-
九 月(Sep.)	498	861	-	-	-	1,643	272	-
十 月(Oct.)	500	826	-	723	-	1,635	269	-
十一 月(Nov.)	505	827	-	730	-	1,640	280	-
十二 月(Dec.)	500	823	-	719	-	1,632	281	-

資料來源：麥寮工業區專用港管理股份有限公司

**Table 16. Efficiency of Cargoes Handled**

管 道		什 貨		貨 櫃		其 他	
Pipe		General Cargoes		Containers		Others	
裝量/工時	卸量/工時	裝量/工時	卸量/工時	裝量/工時	卸量/工時	裝量/工時	卸量/工時
V./H.	V./H.	V./H.	V./H.	V./H.	V./H.	V./H.	V./H.
764	617	342	317	-	-	-	-
764	620	350	315	-	-	-	-
752	618	260	319	-	-	-	-
737	633	390	324	-	-	-	-
734	622	358	312	-	-	-	-
724	614	365	307	-	-	-	-
726	589	361	312	-	-	-	-
728	615	356	314	-	-	-	-
731	618	355	314	-	-	-	-
721	617	369	319	-	-	-	-
725	623	379	317	-	-	-	-
725	610	380	313	-	-	-	-
729	622	-	320	-	-	-	-
718	623	-	322	-	-	-	-
720	630	377	315	-	-	-	-
719	622	-	317	-	-	-	-
725	625	-	320	-	-	-	-
730	622	-	315	-	-	-	-
728	626	-	310	-	-	-	-
723	621	-	319	-	-	-	-
730	630	-	315	-	-	-	-
729	622	-	314	-	-	-	-
719	621	-	320	-	-	-	-

## 附表十七 貨櫃裝卸量

單位：實櫃：

個

貨物：公噸

年 (月) 別 Year and Month	總計		進 口			
	Grand Total		合 計 Total		20 呎 20 Ft.	
	櫃 數 No. of Container	TEU	實 櫃 Loaded Container	空 櫃 Empty Container	實 櫃 Loaded Container	空 櫃 Empty Container
2015	-	-	-	-	-	-
2016	-	-	-	-	-	-
2017	-	-	-	-	-	-
2018	-	-	-	-	-	-
2019	-	-	-	-	-	-
2020	-	-	-	-	-	-
2021	-	-	-	-	-	-
2022	-	-	-	-	-	-
2023	-	-	-	-	-	-
2024	-	-	-	-	-	-
2025	-	-	-	-	-	-
一 月(Jan.)	-	-	-	-	-	-
二 月(Feb.)	-	-	-	-	-	-
三 月(Mar.)	-	-	-	-	-	-
四 月(Apr.)	-	-	-	-	-	-
五 月(May)	-	-	-	-	-	-
六 月(June)	-	-	-	-	-	-
七 月(July.)	-	-	-	-	-	-
八 月(Aug.)	-	-	-	-	-	-
九 月(Sep.)	-	-	-	-	-	-
十 月(Oct.)	-	-	-	-	-	-
十一 月(Nov.)	-	-	-	-	-	-
十二 月(Dec.)	-	-	-	-	-	-

資料來源：麥寮工業區專用港管理股份有限公司。



附表十七 貨櫃裝卸量(續完)

單位：貨櫃：個  
貨物：公噸

年 (月) 別  Year and Month	總計		出 口			
	Grand Total		合 計 Total		20 呎 20 Ft.	
	櫃 數	TEU	實 櫃	空 櫃	實 櫃	空 櫃
	No. of Container		Loaded Container	Empty Container	Loaded Container	Empty Container
2015	-	-	-	-	-	-
2016	-	-	-	-	-	-
2017	-	-	-	-	-	-
2018	-	-	-	-	-	-
2019	-	-	-	-	-	-
2020	-	-	-	-	-	-
2021	-	-	-	-	-	-
2022	-	-	-	-	-	-
2023	-	-	-	-	-	-
2024	-	-	-	-	-	-
2025	-	-	-	-	-	-
一 月(Jan.)	-	-	-	-	-	-
二 月(Feb.)	-	-	-	-	-	-
三 月(Mar.)	-	-	-	-	-	-
四 月(Apr.)	-	-	-	-	-	-
五 月(May)	-	-	-	-	-	-
六 月(June)	-	-	-	-	-	-
七 月(July.)	-	-	-	-	-	-
八 月(Aug.)	-	-	-	-	-	-
九 月(Sep.)	-	-	-	-	-	-
十 月(Oct.)	-	-	-	-	-	-
十一月(Nov.)	-	-	-	-	-	-
十二月(Dec.)	-	-	-	-	-	-

資料來源：麥寮工業區專用港管理股份有限公司。

**Table 17. Number of Containers Handled**

						Cargo - M.T.
貨		櫃				
Outgoing						貨物噸數
35 呎 35 Ft.		40 呎 40 Ft.		45 呎 45 Ft.		
實 櫃	空 櫃	實 櫃	空 櫃	實 櫃	空 櫃	
Loaded Container	Empty Container	Loaded Container	Empty Container	Loaded Container	Empty Container	Cargo Tonnage
-	-	-	-	-	-	-
-	-	-	-	-	-	-
-	-	-	-	-	-	-
-	-	-	-	-	-	-
-	-	-	-	-	-	-
-	-	-	-	-	-	-
-	-	-	-	-	-	-
-	-	-	-	-	-	-
-	-	-	-	-	-	-
-	-	-	-	-	-	-
-	-	-	-	-	-	-
-	-	-	-	-	-	-
-	-	-	-	-	-	-
-	-	-	-	-	-	-
-	-	-	-	-	-	-
-	-	-	-	-	-	-
-	-	-	-	-	-	-
-	-	-	-	-	-	-
-	-	-	-	-	-	-
-	-	-	-	-	-	-
-	-	-	-	-	-	-
-	-	-	-	-	-	-
-	-	-	-	-	-	-
-	-	-	-	-	-	-
-	-	-	-	-	-	-
-	-	-	-	-	-	-
-	-	-	-	-	-	-
-	-	-	-	-	-	-
-	-	-	-	-	-	-
-	-	-	-	-	-	-
-	-	-	-	-	-	-
-	-	-	-	-	-	-
-	-	-	-	-	-	-
-	-	-	-	-	-	-
-	-	-	-	-	-	-
-	-	-	-	-	-	-
-	-	-	-	-	-	-
-	-	-	-	-	-	-
-	-	-	-	-	-	-
-	-	-	-	-	-	-
-	-	-	-	-	-	-
-	-	-	-	-	-	-
-	-	-	-	-	-	-
-	-	-	-	-	-	-
-	-	-	-	-	-	-
-	-	-	-	-	-	-
-	-	-	-	-	-	-
-	-	-	-	-	-	-
-	-	-	-	-	-	-
-	-	-	-	-	-	-
-	-	-	-	-	-	-
-	-	-	-	-	-	-
-	-	-	-	-	-	-
-	-	-	-	-	-	-
-	-	-	-	-	-	-
-	-	-	-	-	-	-
-	-	-	-	-	-	-
-	-	-	-	-	-	-
-	-	-	-	-	-	-
-	-	-	-	-	-	-
-	-	-	-	-	-	-
-	-	-	-	-	-	-
-	-	-	-	-	-	-
-	-	-	-	-	-	-
-	-	-	-	-	-	-
-	-	-	-	-	-	-
-	-	-	-	-	-	-
-	-	-	-	-	-	-
-	-	-	-	-	-	-
-	-	-	-	-	-	-
-	-	-	-	-	-	-
-	-	-	-	-	-	-
-	-	-	-	-	-	-
-	-	-	-	-	-	-
-	-	-	-	-	-	-
-	-	-	-	-	-	-
-	-	-	-	-	-	-
-	-	-	-	-	-	-
-	-	-	-	-	-	-
-	-	-	-	-	-	-
-	-	-	-	-	-	-
-	-	-	-	-	-	-
-	-	-	-	-	-	-
-	-	-	-	-	-	-
-	-	-	-	-	-	-
-	-	-	-	-	-	-
-	-	-	-	-	-	-
-	-	-	-	-	-	-
-	-	-	-	-	-	-
-	-	-	-	-	-	-
-	-	-	-	-	-	-
-	-	-	-	-	-	-
-	-	-	-	-	-	-
-	-	-	-	-	-	-
-	-	-	-	-	-	-
-	-	-	-	-	-	-
-	-	-	-	-	-	-
-	-	-	-	-	-	-
-	-	-	-	-	-	-
-	-	-	-	-	-	-
-	-	-	-	-	-	-
-	-	-	-	-	-	-
-	-	-	-	-	-	-
-	-	-	-	-	-	-
-	-	-	-	-	-	-
-	-	-	-	-	-	-
-	-	-	-	-	-	-
-	-	-	-	-	-	-
-	-	-	-	-	-	-
-	-	-	-	-	-	-
-	-	-	-	-	-	-
-	-	-	-	-	-	-
-	-	-	-	-	-	-
-	-	-	-	-	-	-
-	-	-	-	-	-	-
-	-	-	-	-	-	-
-	-	-	-	-	-	-
-	-	-	-	-	-	-
-	-	-	-	-	-	-
-	-	-	-	-	-	-
-	-	-	-	-	-	-
-	-	-	-	-	-	-
-	-	-	-	-	-	-
-	-	-	-	-	-	-
-	-	-	-	-	-	-
-	-	-	-	-	-	-
-	-	-	-	-	-	-
-	-	-	-	-	-	-
-	-	-	-	-	-	-
-	-	-	-	-	-	-
-	-	-	-	-	-	-
-	-	-	-	-	-	-
-	-	-	-	-	-	-
-	-	-	-	-	-	-
-	-	-	-	-	-	-
-	-	-	-	-	-	-
-	-	-	-	-	-	-
-	-	-	-	-	-	-
-	-	-	-	-	-	-
-	-	-	-	-	-	-
-	-	-	-	-	-	-
-	-	-	-	-	-	-
-	-	-	-	-	-	-
-	-	-	-	-	-	-
-	-	-				

## 附表十八 倉儲業務狀況

單位：公噸

年(月)別	期末倉棧總量 (A) Total Volume of Warehouse at the End of Year	本期進倉量 (B) Receiving	本期進倉量 (C)(不包括存放 貨櫃場部份) Receiving (Excluding Volume of Cargoes Stored in Container Vard	本期出倉量 Delivery	期末進倉量 (D) Remaining
Year and Month	(噸) (Ton)	(噸) (Ton)	(噸) (Ton)	(噸) (Ton)	(噸) (Ton)
2015					
2016					
2017					
2018					
2019					
2020					
2021					
2022					
2023					
2024					
2025					
一月(Jan.)					
二月(Feb.)					
三月(Mar.)					
四月(Apr.)					
五月(May)					
六月(June)					
七月(July.)					
八月(Aug.)					
九月(Sep.)					
十月(Oct.)					
十一月(Nov.)					
十二月(Dec.)					

資料來源：麥寮工業區專用港管理股份有限公司

**Table 18. Volume of Warehousing**

Unit : M.T.

本期延日存倉量(E) (不包括存放露置 場及貨櫃場部份) Storage (Including Volume of Cargoes Stored in Open Space)  (噸日) (Ton - Day)	本期延日存倉量(F) (不包括存放露 置場及貨櫃場部份) Storage (Excluding Volume of Cargoes Stored in Open Space)  (噸日) (Ton - Day)	倉棧平均使用率 E / (Ax當月天數)  %	貨物平均存倉日數 E / (前一期之D+B) Average Cargo Remaining Days Per Ton  (日) (Day)	貨物裝卸量(不包 括管道、貨櫃裝 卸)(G) Volume of Cargoes Handled(Excludeing Pipe & Container Cargoes)  (噸) (Ton)	貨物進倉比率 C / G Percentage of Cargoes Stored  %
--	--	----------------------------------	---	---	---

三、航政監理  
附表十九 工業專用港區域海事案件

單位：艘數

年(月)別 Year and Month	Vessels of Ship - Wreck									
	合計 Total	碰撞	觸礁 或 擱淺	失火	爆炸	洩漏	傾覆	機械 故障	非常 變故	其他
2015	5	2	-	-	-	-	-	-	-	3
2016	2	-	-	-	-	-	-	-	-	2
2017	-	-	-	-	-	-	-	-	-	-
2018	1	-	-	-	-	-	-	-	1	-
2019	1	-	-	-	-	-	-	-	-	1
2020	2	1	-	-	-	-	-	1	-	-
2021	-	-	-	-	-	-	-	-	-	-
2022	-	-	-	-	-	-	-	-	-	-
2023	1	1	-	-	-	-	-	-	-	-
2024	2	2	-	-	-	-	-	-	-	-
2025	-	-	-	-	-	-	-	-	-	-
一月(Jan.)	-	-	-	-	-	-	-	-	-	-
二月(Feb.)	-	-	-	-	-	-	-	-	-	-
三月(Mar.)	-	-	-	-	-	-	-	-	-	-
四月(Apr.)	-	-	-	-	-	-	-	-	-	-
五月(May.)	-	-	-	-	-	-	-	-	-	-
六月(June.)	-	-	-	-	-	-	-	-	-	-
七月(July.)	-	-	-	-	-	-	-	-	-	-
八月(Aug.)	-	-	-	-	-	-	-	-	-	-
九月(Sep.)	-	-	-	-	-	-	-	-	-	-
十月(Oct.)	-	-	-	-	-	-	-	-	-	-
十一月(Nov.)	-	-	-	-	-	-	-	-	-	-
十二月(Dec.)	-	-	-	-	-	-	-	-	-	-

資料來源：麥寮工業區專用港管理股份有限公司

**三、Supervising and Administering of navigation**  
**Table 19. Ship - Wreck**

Unit : Vessels

人 員 傷 亡 (人) Number of Casualties								船 體 損 害	
船 員 Seamen				旅 客 Casualties				船 損	船 沉
合 計 Total	負 傷	失 蹤 Missing	死 亡 Deae	合 計 Total	負 傷	失 蹤 Missing	死 亡 Deae		
3	1	-	2	-	-	-	-	3	-
-	-	-	-	-	-	-	-	1	-
-	-	-	-	-	-	-	-	-	-
-	-	-	-	-	-	-	-	1	-
-	-	-	-	-	-	-	-	1	-
-	-	-	-	-	-	-	-	2	-
-	-	-	-	-	-	-	-	-	-
-	-	-	-	-	-	-	-	-	-
-	-	-	-	-	-	-	-	-	-
-	-	-	-	-	-	-	-	2	-
-	-	-	-	-	-	-	-	-	-
-	-	-	-	-	-	-	-	-	-
-	-	-	-	-	-	-	-	-	-
-	-	-	-	-	-	-	-	-	-
-	-	-	-	-	-	-	-	-	-
-	-	-	-	-	-	-	-	-	-
-	-	-	-	-	-	-	-	-	-
-	-	-	-	-	-	-	-	-	-
-	-	-	-	-	-	-	-	-	-
-	-	-	-	-	-	-	-	-	-
-	-	-	-	-	-	-	-	-	-
-	-	-	-	-	-	-	-	-	-
-	-	-	-	-	-	-	-	-	-
-	-	-	-	-	-	-	-	-	-
-	-	-	-	-	-	-	-	-	-
-	-	-	-	-	-	-	-	-	-
-	-	-	-	-	-	-	-	-	-
-	-	-	-	-	-	-	-	-	-
-	-	-	-	-	-	-	-	-	-
-	-	-	-	-	-	-	-	-	-
-	-	-	-	-	-	-	-	-	-
-	-	-	-	-	-	-	-	-	-
-	-	-	-	-	-	-	-	-	-
-	-	-	-	-	-	-	-	-	-
-	-	-	-	-	-	-	-	-	-
-	-	-	-	-	-	-	-	-	-
-	-	-	-	-	-	-	-	-	-
-	-	-	-	-	-	-	-	-	-
-	-	-	-	-	-	-	-	-	-
-	-	-	-	-	-	-	-	-	-
-	-	-	-	-	-	-	-	-	-
-	-	-	-	-	-	-	-	-	-
-	-	-	-	-	-	-	-	-	-
-	-	-	-	-	-	-	-	-	-
-	-	-	-	-	-	-	-	-	-
-	-	-	-	-	-	-	-	-	-
-	-	-	-	-	-	-	-	-	-
-	-	-	-	-	-	-	-	-	-
-	-	-	-	-	-	-	-	-	-
-	-	-	-	-	-	-	-	-	-
-	-	-	-	-	-	-	-	-	-
-	-	-	-	-	-	-	-	-	-
-	-	-	-	-	-	-	-	-	-
-	-	-	-	-	-	-	-	-	-
-	-	-	-	-	-	-	-	-	-
-	-	-	-	-	-	-	-	-	-
-	-	-	-	-	-	-	-	-	-
-	-	-	-	-	-	-	-	-	-
-	-	-	-	-	-	-	-	-	-
-	-	-	-	-	-	-	-	-	-
-	-	-	-	-	-	-	-	-	-
-	-	-	-	-	-	-	-	-	-
-	-	-	-	-	-	-	-	-	-
-	-	-	-	-	-	-	-	-	-
-	-	-	-	-	-	-	-	-	-
-	-	-	-	-	-	-	-	-	-
-	-	-	-	-	-	-	-	-	-
-	-	-	-	-	-	-	-	-	-
-	-	-	-	-	-	-	-	-	-
-	-	-	-	-	-	-	-	-	-
-	-	-	-	-	-	-	-	-	-
-	-	-	-	-	-	-	-	-	-
-	-	-	-	-	-	-	-	-	-
-	-	-	-	-	-	-	-	-	-
-	-	-	-	-	-	-	-	-	-
-	-	-	-	-	-	-	-	-	-
-	-	-	-	-	-	-	-	-	-
-	-	-	-	-	-	-	-	-	-
-	-	-	-	-	-	-	-	-	-
-	-	-	-	-	-	-	-	-	-
-	-	-	-	-	-	-	-	-	-
-	-	-	-	-	-	-	-	-	-
-	-	-	-	-	-	-	-	-	-
-	-	-	-	-	-	-	-	-	-
-	-	-	-	-	-	-	-	-	-
-	-	-	-	-	-	-	-	-	-
-	-	-	-	-	-	-	-	-	-
-	-	-	-	-	-	-	-	-	-
-	-	-	-	-	-	-	-	-	-
-	-	-	-	-	-	-	-	-	-
-	-	-	-	-	-	-	-	-	-
-	-	-	-	-	-	-	-	-	-
-	-	-	-	-	-	-	-	-	-
-	-	-	-	-	-	-	-	-	-
-	-	-	-	-	-	-	-	-	-
-	-	-	-	-	-	-	-	-	-
-	-	-	-	-	-	-	-	-	-
-	-	-	-	-	-	-	-	-	-
-	-	-	-	-	-	-	-	-	-
-	-	-	-	-	-	-	-	-	-
-	-	-	-	-	-	-	-	-	-
-	-	-	-	-	-	-	-	-	-
-	-	-	-	-	-	-	-	-	-
-	-	-	-						

四、財務  
附表二十 營 業 總 收 入

單位：新台幣元

年 (月) 別	7=5+6	5=1+2+3+4	1
Year and Month	總 計 Grand Total	營 業 收 入 Operating Revenue	港 灣 設 施 使 用 收 入 Facilities Usage Revenue
2015	4,378,523,111	4,146,516,023	2,100,720,458
2016	4,267,925,477	4,086,176,651	2,069,144,742
2017	4,242,551,206	4,089,213,341	2,033,036,319
2018	4,390,073,312	4,259,852,946	2,123,558,276
2019	4,346,807,531	4,131,775,398	2,075,758,705
2020	3,683,050,074	3,560,215,455	1,763,369,114
2021	4,246,647,529	3,849,477,153	1,842,211,723
2022	4,341,998,878	3,954,565,192	1,871,949,911
2023	4,234,915,987	3,845,982,179	1,751,248,214
2024	4,052,067,769	3,816,482,961	1,712,696,004
2025	3,980,285,256	3,850,070,231	1,749,180,812
一 月(Jan.)	354,067,992	350,441,520	172,397,228
二 月(Feb.)	296,546,983	291,098,689	116,361,109
三 月(Mar.)	353,683,906	334,115,524	160,923,051
四 月(Apr.)	300,405,059	295,701,304	130,852,820
五 月(May.)	312,607,485	308,030,497	141,082,943
六 月(June.)	336,165,975	317,949,352	155,523,928
七 月(July.)	352,618,425	345,257,966	150,960,748
八 月(Aug.)	352,166,700	346,982,596	163,075,316
九 月(Sep.)	353,988,475	327,962,285	148,500,326
十 月(Oct.)	294,445,503	290,061,141	128,552,009
十一月(Nov.)	346,285,610	341,735,579	151,834,091
十二月(Dec.)	327,303,143	300,733,778	129,117,243

資料來源：麥寮工業區專用港管理股份有限公司

四、Finance

Table 20. Total Operating Revenue

Unit : N T \$

2	3	4	6
港灣業務收入 Port Revenue	棧埠業務收入 Stevedoring & Warehousing Revenue	租金收入 Rent Revenue of Operating Assets	營業外收入 Non - Operating Revenue
307,514,930	1,738,280,635	-	232,007,088
305,450,052	1,711,581,857	-	181,748,826
310,485,723	1,745,691,299	-	153,337,865
316,027,387	1,820,267,283	-	130,220,366
316,647,246	1,739,369,447	-	215,032,133
283,285,176	1,513,561,165	-	122,834,619
306,197,768	1,701,067,662	-	397,170,376
335,755,760	1,746,859,521	-	387,433,686
328,889,721	1,765,844,244	-	388,933,808
326,398,799	1,777,388,158	-	235,584,808
334,190,955	1,766,698,464	-	130,215,025
31,473,071	146,571,221	-	3,626,472
25,568,059	149,169,521	-	5,448,294
28,295,610	144,896,863	-	19,568,382
24,307,240	140,541,244	-	4,703,755
25,237,020	141,710,534	-	4,576,988
27,899,157	134,526,267	-	18,216,623
29,719,591	164,577,627	-	7,360,459
31,793,892	152,113,388	-	5,184,104
26,780,450	152,681,509	-	26,026,190
25,417,955	136,091,177	-	4,384,362
31,738,551	158,162,937	-	4,550,031
25,960,359	145,656,176	-	26,569,365

## 附表二十一 營 業 總 支 出

單位：新台幣元

年 (月) 別 Year and Month	17=15+16		15=8+9+10+11+12+13+14	8	9	10
	總 計 Grand Total	營 業 支 出 Operating Expense	港 灣 費 用 Port Expense	棧 埠 費 用 Stevedoring & Warehousing Expense	維 持 費 用 Command Expense	
2015	2,946,636,553	2,703,484,299	1,244,391,666	1,241,382,620	-	
2016	2,919,498,495	2,878,092,618	1,445,436,583	1,199,662,620	-	
2017	2,752,674,002	2,721,207,520	1,304,277,115	1,193,404,752	-	
2018	2,977,683,356	2,921,897,835	1,545,517,045	1,156,423,229	-	
2019	2,969,392,988	2,818,484,717	1,451,498,680	1,116,554,588	-	
2020	3,004,809,684	2,909,790,801	1,555,461,834	1,131,333,643	-	
2021	2,925,180,434	2,924,382,341	1,445,144,891	1,255,145,381	-	
2022	3,093,286,159	3,090,697,104	1,418,903,562	1,309,426,019	-	
2023	2,908,760,001	2,908,054,428	1,399,902,153	1,193,485,737	-	
2024	2,931,808,522	2,930,767,839	1,450,433,785	1,151,971,592	-	
2025	2,911,099,354	2,884,736,275	1,412,228,968	1,171,740,126	-	
一 月(Jan.)	246,497,355	246,313,379	112,167,384	104,009,832	-	
二 月(Feb.)	241,269,586	241,249,644	117,502,047	96,455,728	-	
三 月(Mar.)	243,463,964	243,320,372	119,340,439	98,686,875	-	
四 月(Apr.)	226,047,152	225,914,275	115,670,579	87,682,852	-	
五 月(May.)	269,477,315	244,511,024	119,422,577	97,491,888	-	
六 月(June.)	231,411,052	231,382,492	117,838,302	88,524,418	-	
七 月(July.)	243,671,625	243,503,647	115,779,602	104,708,825	-	
八 月(Aug.)	231,855,879	231,715,313	116,362,680	93,387,320	-	
九 月(Sep.)	236,426,113	236,307,820	108,437,741	104,562,267	-	
十 月(Oct.)	235,552,529	235,423,592	108,703,265	99,182,221	-	
十一 月(Nov.)	253,354,121	253,175,846	132,543,405	96,415,442	-	
十二 月(Dec.)	252,072,663	251,918,871	128,460,947	100,632,458	-	

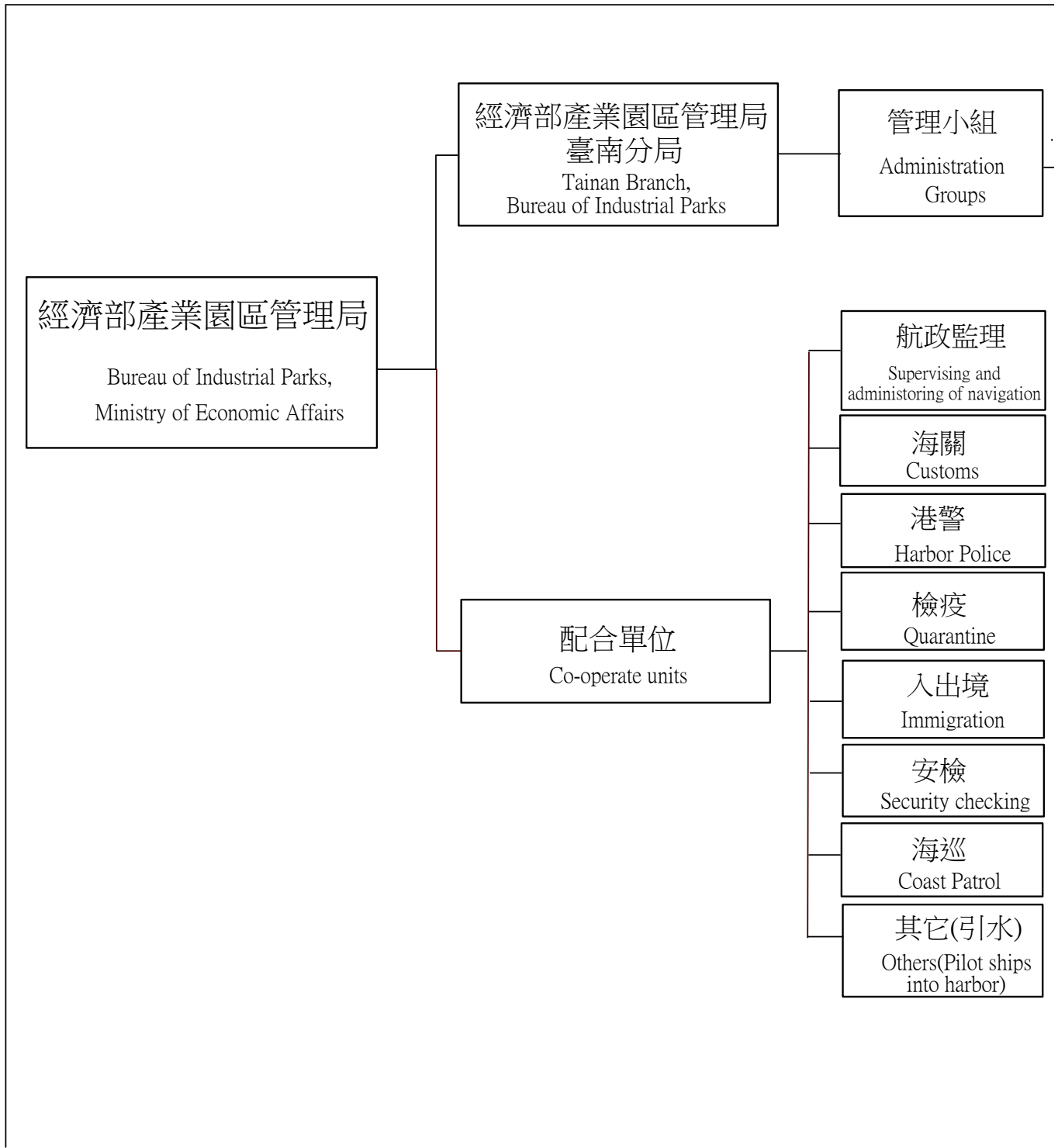
資料來源：麥寮工業區專用港管理股份有限公司

Unit : N T \$

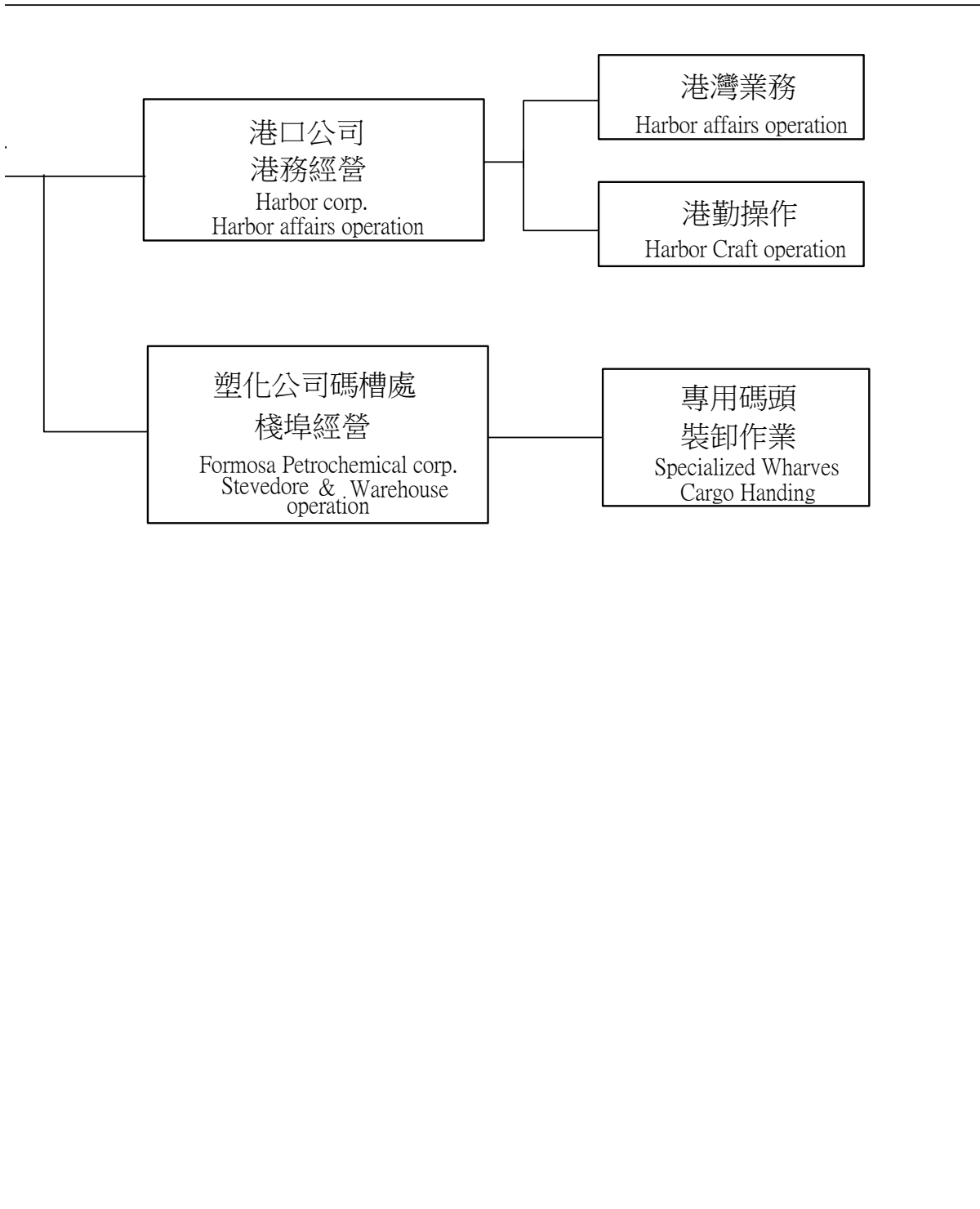
11	12	13	14	16	18=7-17
其他營業費用 Other Operating Expense	業務費用 Business Expense	管理費用 Administration Expense	土地租金 Rent Expense	營業外支出 Non - Operating Expense	盈餘 Surplus
32,296,886	-	162,208,499	23,204,628	243,152,254	1,431,886,558
54,300,391	-	155,488,396	23,204,628	41,405,877	1,348,426,982
28,052,164	-	158,346,257	37,127,232	31,466,482	1,489,877,204
13,819,067	-	169,011,262	37,127,232	55,785,521	1,412,389,956
11,780,412	-	188,374,577	50,276,460	150,908,271	1,377,414,543
7,861,206	-	164,857,658	50,276,460	95,018,883	678,240,390
7,149,462	-	166,666,147	50,276,460	798,093	1,321,467,095
34,315,582	-	265,606,530	62,445,411	2,589,055	1,248,712,719
15,245,443	-	236,393,557	63,027,538	705,573	1,326,155,986
16,954,068	-	246,813,065	64,595,329	1,040,683	1,120,259,247
13,736,003	-	223,015,917	64,015,261	26,363,079	1,069,185,902
1,644,043	-	23,159,759	5,332,361	183,976	107,570,637
1,710,855	-	20,248,653	5,332,361	19,942	55,277,397
1,237,778	-	18,722,919	5,332,361	143,592	110,219,942
1,092,621	-	16,135,862	5,332,361	132,877	74,357,907
1,151,603	-	21,112,595	5,332,361	24,966,291	43,130,170
1,220,394	-	18,467,015	5,332,363	28,560	104,754,923
871,169	-	16,807,204	5,336,847	167,978	108,946,800
1,190,434	-	15,438,032	5,336,847	140,566	120,310,821
1,295,077	-	16,675,888	5,336,847	118,293	117,562,362
746,518	-	21,454,741	5,336,847	128,937	58,892,974
734,691	-	18,145,461	5,336,847	178,275	92,931,489
840,820	-	16,647,788	5,336,858	153,792	75,230,480

## 五、組織與人事

### 附表二十二 港內各作業組織系統表



五、 Organization and Personnel matters  
Table 22. Organization Chart



附表二十三 港內作業人數（依組織別）

單位：人

年(底)別 End of Year	總計 Total		麥寮港管理小組 Mailiao Harbor Administration		民營事業 Harbor Operation Company	
	職員	工員	職員	工員	職員	工員
	Staff	Work Men	Staff	Work Men	Staff	Work Men
2015	377	281	6	1	41	-
2016	389	268	7	1	41	-
2017	385	308	7	1	41	-
2018	389	351	7	1	42	-
2019	387	426	7	1	41	-
2020	388	456	7	1	41	-
2021	385	497	7	1	39	-
2022	377	511	7	1	37	-
2023	383	577	7	1	39	-
2024	378	551	7	1	39	-
2025	358	575	-	-	38	-

資料來源：麥寮工業區專用港管理股份有限公司

**Table 23. Number of Staff & Workmen of the Bureau and Branch Offices**

Unit : Person

港灣作業機構 Marine Service Org.		棧埠作業機構 Marine Terminal Org.		船舶機械修造工廠 Ship & Machinery Works	
職員 Staff	工員 Work Men	職員 Staff	工員 Work Men	職員 Staff	工員 Work Men
6	126	324	154	-	-
20	127	321	140	-	-
17	134	320	173	-	-
14	134	326	216	-	-
13	146	326	279	-	-
15	145	325	310	-	-
13	126	326	370	-	-
12	149	321	361	-	-
14	147	323	429	-	-
14	146	318	404	-	-
14	152	306	423	-	-

附表二十四 港內作業人員學歷（依組織別）

單位：人

年(底)別 End of Year	總計 Total		研究所 Graduate School		大學 Collage	
	男	女	男	女	男	女
	Male	Female	Male	Female	Male	Female
2015	639	19	15	1	113	6
2016	637	20	17	2	109	6
2017	666	27	19	2	112	6
2018	708	32	19	2	128	6
2019	769	44	21	2	139	7
2020	794	50	20	2	144	7
2021	833	49	23	2	148	5
2022	830	58	26	2	156	5
2023	877	83	9	3	167	8
2024	862	67	15	2	167	10
2025	876	57	19	2	158	11
管理小組	-	-	-	-	-	-
民營事業	31	7	3	2	8	2
港灣作業機構	157	9	4	-	37	3
棧埠作業機構	688	41	12	-	113	6

資料來源：麥寮工業區專用港管理股份有限公司

**Table 24. Number of Staff by Education**

Unit : Person

專 科		高 中 職		國 中		國 小	
Junior Collage		Senior High School		Junior High School		Primary School	
男	女	男	女	男	女	男	女
Male	Female	Male	Female	Male	Female	Male	Female
344	2	112	9	43	1	12	-
347	4	117	8	35	-	12	-
369	4	125	14	32	-	9	1
406	7	120	14	27	2	8	1
427	6	138	25	37	3	7	1
449	10	141	25	34	5	6	1
484	13	149	26	25	3	4	-
467	12	151	37	26	2	4	-
484	21	165	36	41	11	11	4
434	12	174	25	59	13	13	5
434	11	187	23	60	8	18	2
-	-	-	-	-	-	-	-
17	-	3	3	-	-	-	-
46	1	46	5	21	-	3	-
371	10	138	15	39	8	15	2

附表二十五 港內作業人員年齡（依組織別）

單位：人

年(底)別 End of Year	總計		19歲以下		20-24歲		25-29歲		30-34歲		35-39歲	
	Total		Age Under		Age		Age		Age		Age	
	男	女	男	女	男	女	男	女	男	女	男	女
	Male	Female	Male	Female	Male	Female	Male	Female	Male	Female	Male	Female
2015	639	19	-	-	6	-	179	1	133	5	99	7
2016	637	20	-	-	8	-	183	2	141	3	100	4
2017	666	27	-	-	18	4	195	3	145	3	103	6
2018	708	32	-	-	26	1	183	2	153	4	100	9
2019	769	44	-	-	26	3	197	6	156	5	115	9
2020	794	50	-	-	34	4	203	5	162	5	116	8
2021	833	49	-	-	37	3	189	3	165	-	122	8
2022	830	58	35	3	159	3	167	3	127	9	99	12
2023	877	83	40	1	143	2	178	4	134	15	105	14
2024	862	67	40	1	135	2	175	4	127	11	94	8
2025	876	57	12	-	100	-	127	3	161	9	122	6
管理小組	-	-	-	-	-	-	-	-	-	-	-	-
民營事業	31	7	-	-	-	-	-	1	-	-	2	-
港灣作業機構	157	9	-	-	2	-	5	-	11	4	8	-
棧埠作業機構	688	41	12	-	98	-	122	2	150	5	112	6

資料來源：麥寮工業區專用港管理股份有限公司

**Table 25. Number of Staff by Age**

Unit : Person

40 - 44 歲		45 - 49 歲		50 - 54 歲		55 - 59 歲		60 - 64 歲		65 歲以上	
Age		Age		Age		Age		Age		Age Over	
男	女	男	女	男	女	男	女	男	女	男	女
Male	Female	Male	Female	Male	Female	Male	Female	Male	Female	Male	Female
88	5	64	1	31	-	14	-	21	-	4	-
77	7	58	1	24	2	15	1	28	-	3	-
75	4	56	4	33	1	15	1	20	1	6	-
98	6	60	7	39	1	28	1	17	1	4	-
112	9	67	6	48	3	32	2	13	1	3	-
112	10	68	7	48	5	32	2	15	4	4	-
119	9	79	10	66	6	31	3	21	7	4	-
73	14	68	5	45	8	38	-	16	1	3	-
81	18	82	8	47	10	35	7	23	4	9	-
70	12	84	8	48	9	47	7	27	3	15	2
71	11	98	7	67	9	58	7	43	3	17	2
-	-	-	-	-	-	-	-	-	-	-	-
1	1	3	2	14	3	7	-	4	-	-	-
21	1	40	1	21	-	26	2	19	1	4	-
49	9	55	4	32	6	25	5	20	2	13	2

六、港埠設施  
附表二十六 機具、車、船（依組織別）

噸量單位：公噸  
總噸位單位：噸

年 (底) 別  End of Year	機									
	貨櫃起重機		跨載機		側跨機		貨櫃裝車機		貨櫃牽引機	
	Container Crane		Straddle Carrier		Lateral Straddle		Container Transfer Unit		Yard Tractor	
	台	噸量	台	噸量	台	噸量	台	噸量	台	噸量
	S.	Tonnage	S.	Tonnage	S.	Tonnage	S.	Tonnage	S.	Tonnage
2015	2	50	-	-	-	-	-	-	-	-
2016	-	-	-	-	-	-	-	-	-	-
2017	-	-	-	-	-	-	-	-	-	-
2018	-	-	-	-	-	-	-	-	-	-
2019	-	-	-	-	-	-	-	-	-	-
2020	-	-	-	-	-	-	-	-	-	-
2021	-	-	-	-	-	-	-	-	-	-
2022	-	-	-	-	-	-	-	-	-	-
2023	-	-	-	-	-	-	-	-	-	-
2024	-	-	-	-	-	-	-	-	-	-
2025	-	-	-	-	-	-	-	-	-	-
管理小組	-	-	-	-	-	-	-	-	-	-
民營事業	-	-	-	-	-	-	-	-	-	-
港灣作業機構	-	-	-	-	-	-	-	-	-	-
棧埠作業機構	-	-	-	-	-	-	-	-	-	-

資料來源：麥寮工業區專用港管理股份有限公司。

六、 Harbor Facilities

Table 26. Mechanical, Vehicular & Marine Equipment

Tonnage Unit : M.T.  
Gross Tonnage : Ton.

具 Mechanical Equipment											
貨櫃吊運機		貨櫃車架		貨櫃側載機		空櫃推高機		起重機		堆高機	
Container Transtainer		Container Chassis		Container Side Loader		Empty C. Fork Lift		Mobile Crane		Fork - Lift Truck	
台	噸量	台	噸量	台	噸量	台	噸量	台	噸量	台	噸量
S.	Tonnage	S.	Tonnage	S.	Tonnage	S.	Tonnage	S.	Tonnage	S.	Tonnage
4	80	-	-	-	-	-	-	-	-	14	15
-	-	-	-	-	-	-	-	-	-	14	15
-	-	-	-	-	-	-	-	-	-	17	15
-	-	-	-	-	-	-	-	-	-	16	20
-	-	-	-	-	-	-	-	-	-	16	20
-	-	-	-	-	-	-	-	-	-	16	20
-	-	-	-	-	-	-	-	-	-	-	-
-	-	-	-	-	-	-	-	-	-	15	15
-	-	-	-	-	-	-	-	-	-	15	15
-	-	-	-	-	-	-	-	-	-	15	15
-	-	-	-	-	-	-	-	-	-	-	-
-	-	-	-	-	-	-	-	-	-	-	-
-	-	-	-	-	-	-	-	-	-	-	-
-	-	-	-	-	-	-	-	-	-	15	15

附表二十六 機具、車、船（依組織別）（續完）

噸量單位：公噸  
總噸位單位：噸

年(底)別 End of Year	車 輛 Vehicular Equipment									
	拖 車		拖 板		卡車、工程 車、清掃車		挖 泥 船		受 泥 船	
	Towing Tractor		Full Trailer		Truck		Dredger		Mud Boat	
	台	噸量	台	噸量	台	噸量	艘	總噸位	艘	總噸位
	S. Tonnage	S. Tonnage	S. Tonnage	S. Tonnage	S. Tonnage	S. Tonnage	V. Tonnage	V. Tonnage	V. Tonnage	V. Tonnage
2015	16	35	10	35	38	29	-	-	-	-
2016	-	-	-	-	37	28	-	-	-	-
2017	-	-	-	-	37	21	-	-	-	-
2018	-	-	-	-	41	19	-	-	-	-
2019	-	-	-	-	38	129	-	-	-	-
2020	-	-	-	-	11	44	-	-	-	-
2021	-	-	-	-	11	44	-	-	-	-
2022	-	-	-	-	11	44	-	-	-	-
2023	-	-	-	-	10	42	-	-	-	-
2024	-	-	-	-	15	55	-	-	-	-
2025	-	-	-	-	15	55	-	-	-	-
管理小組	-	-	-	-	-	-	-	-	-	-
民營事業	-	-	-	-	-	-	-	-	-	-
港灣作業機構	-	-	-	-	3	6	-	-	-	-
棧埠作業機構	-	-	-	-	12	49	-	-	-	-

資料來源：麥寮工業區專用港管理股份有限公司。

**Table 26. Mechanical, Vehicular & Marine Equipment**

Tonnage Unit : M.T.  
Gross Tonnage : Ton.

工 作 船 Marine Equipment											
拖 船		給 水 車		起 重 車		駁 船		交 通 船		什 用 船	
Tug Boat		Water Boat		Tug Boat		Brage		Traffic Boat		miscellaneous Bo	
艘	總噸位	艘	總噸位	艘	總噸位	艘	總噸位	艘	總噸位	艘	總噸位
V.	Tonnage	V.	Tonnage	V.	Tonnage	V.	Tonnage	V.	Tonnage	V.	Tonnage
11	3,007	-	-	-	-	-	-	4	192	3	81
11	3,007	-	-	-	-	-	-	4	192	3	81
10	2,961	-	-	-	-	-	-	4	192	4	239
10	2,961	-	-	-	-	-	-	4	192	4	239
10	3,041	-	-	-	-	-	-	4	192	4	239
11	3,441	-	-	-	-	-	-	4	192	3	237
13	4,415	-	-	-	-	-	-	4	192	3	237
10	3,437	-	-	-	-	-	-	4	192	3	237
10	3,437	-	-	-	-	-	-	4	192	3	237
9	3,391	-	-	-	-	-	-	4	192	3	237
9	3,391	-	-	-	-	-	-	4	191	3	237
-	-	-	-	-	-	-	-	-	-	-	-
-	-	-	-	-	-	-	-	-	-	-	-
9	3391	-	-	-	-	-	-	4	191	3	237
-	-	-	-	-	-	-	-	-	-	-	-

## 附表二十七 港埠工程

總長度單位：公尺  
有效容量單位：公噸  
繫泊能力單位：總噸  
堆儲量單位：公噸

年 (底) 別 End of Year	專 用 碼 頭 Wharves		倉 棧 Warehouse and Sheds		浮筒 Bouys	
	座 Set	總長度 T.L.	座 Set	總長度 T.L.	座 Set	總長度 T.L.
	2015	20	5,701	-	-	-
2016	20	5,701	-	-	-	-
2017	20	5,701	-	-	-	-
2018	20	5,701	-	-	-	-
2019	20	5,701	-	-	-	-
2020	20	5,701	-	-	-	-
2021	20	5,701	-	-	-	-
2022	20	5,701	-	-	-	-
2023	20	5,701	-	-	-	-
2024	20	5,701	-	-	-	-
2025	20	5,701	-	-	-	-

資料來源：麥寮工業區專用港管理股份有限公司

**Table 27. Harbor Construction**

Total Length : M.  
 Storage Capacity : M.T.  
 Berthing Capacity : G.T.  
 Warehouse Unit : MT

堆貨場		過港隧道		公用碼頭	
Open Storage Yards		Cross Harbor Tunnel		Public Wharves	
座	總長度	座	總長度	座	總長度
Set	T.L.	Set	T.L.	Set	T.L.
2	98,100	-	-	-	-
2	98,100	-	-	-	-
-	-	-	-	-	-
-	-	-	-	-	-
-	-	-	-	-	-
-	-	-	-	-	-
-	-	-	-	-	-
-	-	-	-	-	-
-	-	-	-	-	-
-	-	-	-	-	-
-	-	-	-	-	-



主管機關

經濟部

台北市中正區福州街 15 號

電話：(02)23212200



管理機關

經濟部產業園區管理局

高雄市楠梓區加昌路 600 號

電話：(07)3611212 傳真：(07)3612751



經營單位

麥寮工業區專用港管理股份有限公司

雲林縣麥寮鄉中興村台塑工業園區一號之一

電話：(05)6815016 傳真：(05)6812135