

# 麥寮工業專用港

## 統計要覽

### STATISTICAL ABSTRACT OF MAILIAO HARBOR

中華民國107年 2018(每年一期)

經濟部工業局編印

Complied By

Industrial Development Bureau  
Ministry of Economic Affairs  
, Republic of China(Taiwan)

108年05月出版

# 目 錄

## Contents

頁次(page)

第一篇	基本概況 Basic Overview .....	1
第二篇	提要分析 Summary Analysis .....	3
第三篇	統計表 Statistics Tables	
一、港務 Harbor Management		
(一)船舶 Vessels		
附表 1	進出港輪船地區 .....	22
	Incoming and Outgoing Vessels by Area	
附表 2	進港輪船國籍 .....	24
	Number of Incoming Vessels by Registered Nationality	
附表 3	進港輪船種類 .....	26
	Number of Incoming Vessels by Kind	
附表 4	進港輪船航次 .....	28
	Number of Incoming Vessels by Line of Navigation	
附表 5	出港輪船航次 .....	30
	Number of Outgoing Vessels by Line of Navigation	
附表 6	進港輪船噸級與在港停泊時間 .....	32
	Number of Incoming Vessels by Gross Tonnage and Time of Vessels Mooring in Port	
(二)貨物 Cargoes		
附表 7	進出港貨物國輪外輪承運量 .....	34
	Tonnage of Imports & Exports Carried by Domestic and Foreign Vessels	
附表 8	進港貨物(地區別) .....	36
	Tonnage of Imports (by Region)	

# 目 錄

## Contents

	頁次(page)
附表 9 出港貨物(地區別).....	38
Tonnage of Exports (by Region)	
附表 10 進港貨物分類(按月).....	40
Classification of Imports (by Month)	
附表 11 進港貨物分類(按碼頭).....	44
Classification of Imports (by Wharf)	
附表 12 出港貨物分類(按月).....	48
Classification of Exports (by Month)	
附表 13 出港貨物分類(按碼頭).....	52
Classification of Exports (by Wharf)	
二、棧埠 Stevedoring & Warehousing	
附表 14 本港裝卸業者營運實績(依公司別).....	54
Volume of Cargoes Handled by Stevedoring & Warehousing Companies	
附表 15 裝卸貨物噸量.....	56
Volume of Cargoes Handled	
附表 16 裝卸貨物效率.....	58
Efficiency of Cargoes Handled	
附表 17 貨櫃裝卸量.....	60
Number of Containers Handled	
附表 18 倉儲業務概況.....	64
Volume of Warehousing	
三、航政監理 Supervising and Administering of navigation	
附表 19 工業專用港區域海事案件 Ship-Wreck...	66

# 目 錄

## Contents

頁次(page)

四、財務 Finance	
附表 20 營業總收入 Total Operating Revenue...	68
附表 21 營業總支出 Total Operating Expense...	70
五、組織及人事 Organization and Personnel matters	
附表 22 港內各作業組織系統表.....	72
Organization Chart	
附表 23 港內作業人數(依組織別).....	74
Number of Staff & Workmen of the Bureau and Branch Offices	
附表 24 港內作業人員學歷(依組織別).....	76
Number of Staff by Education	
附表 25 港內作業人員年齡(依組織別).....	78
Number of Staff by Age	
六、港埠設施 Harbor Facilities	
附表 26 機具、車、船(依組織別).....	80
Mechanical, Vehicular & Marine Equipment	
附表 27 港埠工程.....	84
Harbor Construction	

## 第一篇 基本概況

### 一、港埠基本資料

經濟部為因應我國基礎工業之發展，配合六輕及六輕擴大投資計畫用地需求，以提供國內既有及未來石化產業建廠及遷廠需要，乃規劃於雲林縣外海以抽砂填海造地方式開發雲林離島式基礎工業區，共分有麥寮區、新興區、台西區及四湖區，其中麥寮區之六輕計畫石化工業區係由台塑企業自行進行抽砂填海造地，而麥寮工業專用港（以下簡稱麥寮港）內之專用碼頭，則全為配合六輕計畫所興建。

麥寮港為我國由民營事業投資興建及經營管理港口之首例，其港埠經營完全由台塑企業成立之麥寮工業區專用港管理股份有限公司（以下簡稱港口公司）負責，經濟部工業局於 89 年 10 月 1 日現地派駐成立麥寮工業專用港管理小組（以下簡稱管理小組），以最精簡人力有效扮演監督，執行具有公權力之港務行政管理及協調航政、海關、港警、檢疫及安檢等其他相關公務機關，順利於 90 年 2 月 22 日邀集交通部、財政部、內政部、國防部、海巡署、環保署、農委會及雲林縣政府等各機關現地履勘合格後，於 90 年 3 月 1 日起開始正式營運。

麥寮港位於東經 120 度 08.9 分、北緯 23 度 46.9 分。北起濁水溪口南側，南臨新虎尾溪口，澎湖水道東側海岸。北距台中港約 40 浬，南離高雄港約 80 浬。港口方向朝西偏南 34°（約介於西南西與西南間），航道於中潮位水深 24 公尺，可供 30 萬噸級船舶進出，為台灣最深之港口。

## 二、港灣及碼頭

### (一)港灣設施

- (1)防波堤：西防波堤長 3,243 公尺，南防波堤長 2,227 公尺。
- (2)迴船池：直徑 900 公尺。
- (3)港外水域：劃設領港登輪區、外航道及到港船舶錨泊區。
- (4)導航設施：進港疊標及堤頭燈塔等，用以引導及協助船舶之安全航行。
- (5)信號台設施：船舶交通管理系統(VTS)、海氣象設施及 DSB 通信設備等，用以管制船舶航行與進出港。
- (6)港勤船渠：供港勤船舶靠泊、加油及加水等使用。
- (7)港務港勤大樓：提供政府單位、港區作業單位、港口公司及信號台辦公或作業所需。
- (8)機工場及滑道：供港勤船舶維修、檢驗及保養所需。

### (二)碼頭設施

營運中 20 座專用碼頭分別由台塑石化公司及麥寮汽電公司自行投資興建及維護管理。

## 三、設備概況

### (一)港勤船舶

由港口公司購置拖船 10 艘、交通船 1 艘及什用船 1 艘，用以協助船舶進出港口及靠泊碼頭所需。

### (二)裝卸設備

各碼頭依裝卸需求由裝卸作業單位購置裝卸機具，諸如卸料臂及卸煤機等，以提供裝卸服務。

## 第二篇 提要分析

### 一、營運實績

#### (一)進出港船舶

(1)進港船舶：107年1月至12月進港船舶合計2,680艘次，5,998萬231總噸位，較106年增加16艘次，增加率為0.6%，總噸位增加24萬2,612總噸位，增加率為0.41%，若與90年比較，則增加1,305艘次及增加3,805萬9,528總噸位，增加率分別為95.48%與173.62%。

(2)出港船舶：107年1月至12月出港船舶合計2,682艘次，5,977萬7,299總噸位，較106年增加19艘次，增加率為0.71%，總噸位減少1,943總噸位，減少率為0.003%，若與90年比較，則增加1,308艘次及增加3,781萬4,133總噸位，增加率分別為95.2%與172.17%。

(二)貨物吞吐量：107年全年進港貨物為5,039萬4,210公噸、出港貨物為2,385萬3,577公噸，吞吐量為7,424萬7,787公噸，較上年增加286萬113公噸，增加率為4.01%。若與90年比較，則增加4,792萬7,741公噸，增加率為182.1%。

(三)貨物裝卸量：107年1月至12月全港裝卸量合計為7,439萬735公噸，較上年增加302萬8,742公噸，增加率為4.24%。若與90年比較，則增加4,834萬9,307公噸，增加率為185.66%；另107年區內貨主以台塑石化公司5,916萬2,228公噸為最多，占79.53%，其次為麥寮汽電公司435萬3,765公噸，占5.85%，再次為台塑公司418萬554公噸，占5.62%。

(四)謹刊列臺灣地區各港口107年營運量比較表（如表1），以供參考。

## 二、港務統計資料

107 年度進出港船舶及貨物，依各類統計條件說明如次：

### (一) 船舶

- (1) 進港船舶國籍：以巴拿馬 413 艘次為最多，其次為香港 389 艘次，再次為賴比瑞亞 237 艘次。
- (2) 進港船舶種類：以油輪 639 艘次為最多，其次為液化輪 407 艘次，再次為化學輪 229 艘次。
- (3) 進港輪船航次：以國內而言，來自於高雄港 12 艘次為最多。以國外而言，則以中國 1,053 艘次為最多，其次為南韓 482 艘次，再次為菲率賓 140 艘次。
- (4) 出港輪船航次：以國內而言，前往高雄 16 艘次為最多。以國外而言，則以中國 1,058 艘次為最多，其次為新加坡 476 艘次，再次為南韓 372 艘次。
- (5) 進港船舶噸級：進港船舶每艘平均 2 萬 2,381 總噸，較上年度減少 43 總噸，其中有 929 艘次船舶總噸位介於 1,000~4,999 總噸位為最多，其次船舶總噸位介於 5,000~9,999 總噸位為 637 艘次，再次船舶總噸位介於 20,000~39,999 總噸位為 375 艘次。
- (6) 在港停泊時間：出港船舶每艘平均停泊 38.9 小時，較上年度增加 0.57 小時，其中有 1,347 艘次以船舶停泊 25~48 小時為最多，其次為 24 小時以內者 841 艘次，再次為 49~72 小時者 273 艘次。

### (二) 貨物

- (1) 船舶承運量：國輪承運 252 萬 9,839 公噸，占全部 3.41%，較上年度減少 2 萬 1,871 公噸，負成長 0.86%。外輪承運 7,171 萬 7,948 公噸，占全部 96.59%，較上年度增加 288 萬 1,984 公噸，成長 4.19%。
- (2) 貨物來源地：以沙烏地阿拉伯 995 萬 9,281 公噸為最多，占 19.76%，其次為科威特 797 萬 2,094 公噸，占 15.82%，再次為澳



洲 655 萬 210 公噸，占 13%。

(3)貨物運達地：以中國大陸 630 萬 4,879 噸為最多，占 26.43%，其次為菲律賓 455 萬 5,463 公噸，占 19.1%，再次為新加坡 237 萬 7,832 公噸，占 9.97%。

(4)進港貨物類別：以非金屬礦物製品 3,426 萬 7,624 公噸為最多，占 68%，其次為礦產品 1,413 萬 1,454 公噸，占 28.04%，再次為化學品 189 萬 7,192 公噸，占 3.76%。

(5)出港貨物類別：以非金屬礦物製品 1,293 萬 9,335 公噸為最多，占 54.25%，其次為化學品 754 萬 5,656 公噸，占 31.63%，再次為其他什貨 309 萬 1,506 公噸，占 12.96%。

(6)進港貨物卸貨碼頭：以西三碼頭 2,093 萬 8,390 公噸為最多，占 41.55%，其次為西二碼頭 925 萬 1,403 公噸，占 18.36%，再次為東四碼頭 601 萬 3,900 公噸，占 11.93%。

(7)出港貨物裝貨碼頭：以東七碼頭 461 萬 1,256 公噸為最多，占 19.33%，其次為西一碼頭 375 萬 789 公噸，占 15.72%，再次為東八碼頭 314 萬 3,099 噸，占 13.18%。

### 三、棧埠統計資料

107 年度棧埠裝卸情形，依各類統計條件說明如次：

(1)貨主：以台塑石化公司 5,916 萬 2,228 公噸為最多，占 79.53%，其次為麥寮汽電公司 435 萬 3,765 公噸，占 5.85%。

(2)裝卸貨物：裝貨部份以管道貨 2,280 萬 5,580 公噸為最多，占裝貨量 95.96%。卸貨部份以管道貨 3,580 萬 4,324 公噸為最多，占卸貨量 70.73%，其次為燃煤 1,288 萬 6,588 公噸，占 25.46%

。

(3)裝卸效率：平均每小時裝貨量 491 公噸，較上年度增加 1.24%。平均每小時卸貨量 855 公噸，較上年度增加 0.35%。

(4)貨櫃：自 103 年 05 月份起未再有貨櫃裝卸業務。

#### 四、航政統計資料

107 年麥寮港海事案件計 1 件，較上年增加 1 件。

#### 五、財務統計資料

港口公司及裝卸單位 107 年營業收入總計 43.9 億元，較上年增加 1.47 億元，成長 3.46%。營業支出總計 29.78 億元，較上年增加 2.25 億元，成長 8.17%。

#### 六、組織及人事統計資料

- (1)管理小組：執行具有公權力之港務行政管理及協調航政、海關、港警、檢疫及安檢等其他相關公務機關，合計 8 人（含主任），與上年度相同。
- (2)港口公司：負責麥寮港之經營與管理，設有管理組、航管組、港安組及工程組，由航管組、港安組及工程組負責現地港務業務，合計 42 人，較上年度增加 1 人。
- (3)港灣作業機構：麥寮港之拖船操作業務係由港口公司委託台塑海運公司執行，另引水人接送、帶解纜、船舶垃圾清理及港區海面垃圾清理等業務由外包廠商負責辦理，合計 148 人，較上年度減少 3 人。
- (4)棧埠作業機構：由區內興辦工業人委託台塑石化公司碼槽處執行專用碼頭之裝卸作業，另攔油索佈放、加油及加水等作業由外包廠商負責辦理，合計 542 人，較上年度增加 49 人。

#### 七、港埠設施統計資料

- (1)港棧設施：20 座專用碼頭。
- (2)船舶：拖船 10 艘、交通船 4 艘及什用船 4 艘等 18 艘港勤船舶，與上

年度相同。

(3)機具：16 台機具，較上年度減少 1 台。

(4)車輛：41 台車輛，較上年度增加 4 台。

表 1 107 年度台灣地區各港口營運量比較

港口別	進港船舶				吞吐量		貨物裝卸量	
	艘次	%	總噸位	%	公噸	%	計費噸	%
總計	40,652	100.00%	863,649,756	100.00%	325,781,727	100.00%	822,958,051	100.00%
麥寮港	2,680	6.59%	59,980,231	6.94%	74,247,786	22.79%	74,390,735	9.04%
和平港	331	0.81%	5,338,872	0.62%	7,715,132	2.37%	7,715,204	0.94%
高雄港	17,772	43.72%	455,119,748	52.70%	118,797,570	36.47%	458,925,457	55.77%
基隆港	5,678	13.97%	95,584,764	11.07%	17,281,501	5.30%	61,894,668	7.52%
台中港	7,713	18.97%	135,080,625	15.64%	74,092,991	22.74%	129,356,662	15.72%
花蓮港	1,178	2.90%	9,222,550	1.07%	8,740,957	2.68%	9,033,810	1.10%
蘇澳港	530	1.30%	6,753,440	0.78%	4,490,325	1.38%	4,772,520	0.58%
安平港	485	1.19%	3,594,767	0.42%	1,469,077	0.45%	1,444,518	0.18%
台北港	4,285	10.54%	92,974,759	10.77%	18,946,388	5.82%	75,424,477	9.17%

商港資料來源：高雄港統計年報

## Chapter I. Basic Overview

### 1. Basic Harbor Information

In response to basic domestic development, to co-op with the land necessity of the Six Naphtha Cracking Complex Project and its expansion, and to domestically provide existing and future necessities for the construction and relocation of petrochemical business. The Ministry of Economic Affairs has planned to develop the Yunlin offshore Primary Industry Zone by dredging sea sand for landfill to create offshore lands. The lands created include Mailiao, Hsin Hsing, Tai Hsi, and Ssu Hu. Mailiao area is the petrochemical zone under the Sixth Naphtha Cracking Complex Project which was proceeded by the Conglomerates of Formosa Plastic by dredging sea sand for landfill. The special purpose wharves inside the industrial harbor of Mailiao (hereinafter referred to as Mailiao Harbor) were all constructed to cooperate with the Sixth Naphtha Cracking Complex Project.

Mailiao Harbor was the first domestic private enterprise constructed, operated and managed harbor. The harbor operation is run by the Mailiao Harbor Administration Corporation (hereinafter referred to as Mailiao Harbor Corporation) established by Formosa Plastics Groups. The Industrial Development Bureau of the Ministry of Economic Affairs constructed the management groups for Mailiao exclusive industrial harbor (hereinafter referred to as Administration groups) on Oct. 1, 2000, and used the most streamlined manpower to supervise and implement harbor administrative management, and coordinate the navigation &

shipping supervision, customs, harbor police, quarantine, security inspection and other relevant government authorities. After an inspection approval was carried out by the Ministry of Transportation and Communications, the Ministry of Finance, the Ministry of the Interior, the Ministry of National Defense, the Department of Coast Guard, the Department of Environment Protection, the Committee of Agriculture Affairs and the Government of Yunlin County on Feb. 22, 2001; it started its official operation on Mar. 1, 2001.

Mai Liao Harbor is located at longitude 120°08.9' E , latitude 23°46.9'. It is bordered to the north by Chuoshui Stream and to the south by Hsinhuwei Stream. The harbor lies 40 nautical miles south of Taichung and 80 nautical miles north of Kaohsiung. The harbor direction faces west with an inclination of 34 degrees to the south. The shipping channel is 24 meters deep at mean tide and can accommodate 300,000 DWT class VLCC, making it Taiwan's deepest harbor.

## 2. Harbor and Wharf

### A. Harbor Facilities

- (1) Breakwater: The west breakwater is 3,243 meters long, and the south breakwater is 2,227 meters long.
- (2) Turning basin: 900 meters in diameter.
- (3) Outer waters: The outer waters are divided into a Pilot Station, outer navigation channel and anchorage.
- (4) Aids to navigation: Include leading range and breakwater lighthouses to assist in guiding ships into and out of the harbor.

- (5) Signal station: Include VTS (vessel traffic services), climate & sea conditions facilities and DSB communication equipment.
- (6) Harbor craft basin: For the wharfing and servicing (oil and water) of harbor craft.
- (7) Harbor administration building: Provides government agencies, harbor operating unit, Mailiao Harbor Corporation and signal station or operational demands.
- (8) Ship & machinery repair works and slipway: For repair, inspection and maintenance of harbor craft.

#### B. Wharf Facilities

The 20 operating appropriate berths respectively are constructed, operated and managed by Formosa Petrochemical Corporation and Mailiao Power Corporation.

### 3. Equipment Overview

#### A. Harbor Vessels

Mailiao Harbor Corporation has purchased 10 tug boats, 1 shuttle boat and 1 miscellaneous boat to assist the incoming/outgoing vessels and docking requirements.

#### B. Loading/Unloading Equipment

According to the loading/unloading demands, various wharfs' loading/unloading operation unit will purchase the loading/unloading equipment, such as unloading arm and coal unloader to provide the loading/unloading services.

## Chapter II. Summary Analysis

### 1. Operation Performance

#### A. Incoming/Outgoing Vessels

(1) Incoming Vessels: A total of 2,680 vessels called at Mailiao Harbor in 2018 and amounted to a gross tonnage of 59,980,231. The number of vessels had an increase of 16 (0.6%), and the gross tonnage increased 242,612 GT (0.41%), compared to the previous year. Compared to 2001, the number of the vessels had an increase of 1,305 (95.48%) and the gross tonnage increased 38,059,528 GT (173.62%).

(2) Outgoing Vessels: A total of 2,682 vessels called at Mailiao Harbor in 2018 and amounted to a gross tonnage of 59,777,299. The number of vessels had an increase of 19(0.71%), and the gross tonnage decreased 1,943 GT (0.003%), compared to that of the previous year. Compared to 2001, the number of vessels had an increase of 1,308 (95.2%) and the gross tonnage increased 37,814,133 GT (172.17%).

B. Cargo throughput: At Mailiao Harbor, the imports reached 50,394,210 MT in 2018, and the exports reached 23,853,577 MT. The amount of cargo throughput reached 74,247,787 MT, 2,860,113 MT (4.01%) more than that of the previous year. It had an increase of 47,927,741 MT (182.1%) over 2001.

C. Loading and Unloading: In 2018 the amount of loading and unloading reached 74,390,735 revenue tons, 3,028,742 MT (4.24%) more than that

of the previous year. Compared to 2001, the amount of loading and unloading had an increase of 48,349,307 MT (185.66%). In addition, Formosa Petrochemical Corporation was the biggest owner of cargo in 2018, 59,162,228 MT (79.53%), followed by Mailiao Power Corporation's 4,353,765 MT (5.85%), and Formosa Plastics Corporation's 4,180,554 MT (5.62%).

D. The business volume comparison table of Taiwan harbors in 2018 is listed for reference (See Table 1).

## 2. Harbor Statistical Information

The 2018 incoming/outgoing vessels and cargo are described in accordance with the various statistical conditions as follows:

### A. Vessels

- (1) Incoming Vessels by Nationality: Most incoming vessels came from Panama, 413, followed by Hong Kong, 389 and Liberia, 237.
- (2) Incoming Vessels by Kind: There are 639 tankers, followed by 407 liquid chemical tankers, and 229 chemical tankers.
- (3) Incoming Vessels by Line of Navigation: Domestically, there are 12 ships from Kaohsiung Harbor. Internationally, there are 1,053 ships from China, followed by 482 ships from South Korea and 140 ships from Philippine.
- (4) Outgoing Vessels by Line of Navigation: Domestically, there are 16 ships going to Kaohsiung. Internationally, there are 1,058 ships going to



China, followed by 476 ships going to Singapore and 372 ships going to South Korea.

(5) Incoming Vessels by Gross Tonnage: On average, each incoming vessel has 22,381 GT, compared to 2017, the gross tonnage had a decrease of 43, of which there are 929 vessels between 1,000 GT~4,999 GT, 637 vessels between 5,000 GT~9,999 GT, and 375 vessels between 20,000 GT~39,999 GT.

(6) Time of Vessels Mooring in port: The average number of mooring hours of the outbound vessels is 38.9 which is 0.57 hours more than in 2017, of which there are 1,347 vessels mooring for 25~48 hours, followed by 841 vessels mooring in 24 hours, and 273 vessels mooring for 49~72 hours.

## B. Cargo

(1) Vessels Carried Volume: The domestic vessel carried volume is 2,529,839 tons (3.41%) and 21,871 tons less than in 2017; it has a negative growth of 0.86%. The foreign vessels cargo volume is 71,717,948 tons (96.59%), and 2,881,984 tons more than in 2017; it has a growth of 4.19%.

(2) Cargo Origin: Most cargo originates from Saudi Arabia. It has 9,959,281 MT (19.76%), followed by Kuwait's 7,972,094 MT (15.82%), and Australia's 6,550,210 MT (13%).

(3) Cargo Destination: Most cargo is destined for Mainland China with

6,304,879 MT(26.43%), followed by Philippine's 4,555,463 MT (19.1%), and Singapore's 2,377,832 MT (9.97%).

(4) Classification of Imports: The non-metallic mineral products are the most, 34,267,624 MT (68%), followed by 14,131,454 MT of mineral products (28.04%), and 1,897,192 MT of chemical products (3.76%).

(5) Classification of Exports: The non-metallic mineral products are the most, 12,939,335 MT (54.25%), followed by 7,545,656 MT of chemical products (31.63%), and 3,091,506 MT of general merchandise products (12.96%).

(6) Unloading Berths of Imports: Berth West-3 has the most unloading of imports, 20,938,390 MT (41.55%), followed by Berth West-2, which has 9,251,403 MT (18.36%), and Berth East-4, which has 6,013,900 MT (11.93%).

(7) Loading Berths of Exports: Berth East-7 has the most loading of exports, 4,611,256 MT (19.33%), followed by Berth West-1 which has 3,750,789 MT (15.72%), and Berth East-8, which has 3,143,099 MT (13.18%).

### C. Stevedoring & Warehousing Statistical Information

The 2018 Stevedoring & Warehousing situations are described in accordance with the various statistical conditions as follows:

(1) Owner of Cargo: Formosa Petrochemical Corporation is 59,162,228 MT (79.53%) of the most, followed by Mailiao Power Corporation's 4,353,765 MT (5.85%).

(2) Cargo Handling: For cargo loading, the most is pipe line cargo, 22,805,580 MT (95.96%). For cargo unloading, the most is pipe line cargo, 35,804,324 MT (70.73%), followed by 12,886,588 MT of coal (25.46%).

(3) Cargo Handling Efficiency: The average loading volume is 491 MT per hour, which is 1.24% more than 2017. The average unloading volume is 855 MT per hour, which is 0.35% more than the previous year.

(4) Container: There is no Loading/unloading container operation since May 2014.

#### 4. Navigation & Shipping Supervision Statistical Information

One marine accident was found in Mailiao Harbor in 2018, one accident more than the previous year.

#### 5. Financial Statistical Information

The 2018 total operation revenue of Mailiao Harbor Corporation and the loading/unloading units was 4.39 billion, which is 0.147 billion more than in 2017; a growth of 3.46%. The total operation expenses were 2.978 billion, which is 0.225 billion more than in 2017; a growth of 8.17%.

#### 6. Organization and Personnel Statistical Information

(1) Administration Groups: implement harbor administrative management, and coordinate the navigation & shipping supervision, customs, harbor police, quarantine, security inspection and other relevant government authorities. There is a total of 8 people (including the chief), the same as

the previous year.

- (2) Mailiao Harbor Corporation: responsible for the operation and management of Mailiao Harbor; there is a administration section, a port traffic control section, a port security section and a port engineering section set up. The on-site harbor affairs are run by the port traffic control section, port security section and port engineering section, which has a total of 42 people, one person more than the previous year.
- (3) Harbor Operators: tugboat operation of Mailiao Harbor is implemented by Formosa Plastics Marine Corporation, commissioned by Mailiao Harbor Corporation, and the pilot pick up, mooring&unmooring, vessels trash cleaning and harbor sea surface trash cleaning, etc. affairs handled by the outsourced suppliers. It has a total of 148 people, 3 persons less than the previous year.
- (4) Berths Operators: district industrial personnel commissioned Formosa Petrochemical Corporation implement appropriate wharf loading/unloading operations. The oil boom laying, oil and water servicing operations are handled by the outsourced suppliers; it has a total of 542 people, 49 people more than the previous year.

## 7. Harbor Facilities Statistical Information

- (1) Harbor Facilities: 20 specialized wharves.
- (2) Vessels: 18 harbor vessels, including 10 tug boats, 4 shuttle boats and 4 miscellaneous boats, the same as the previous year.

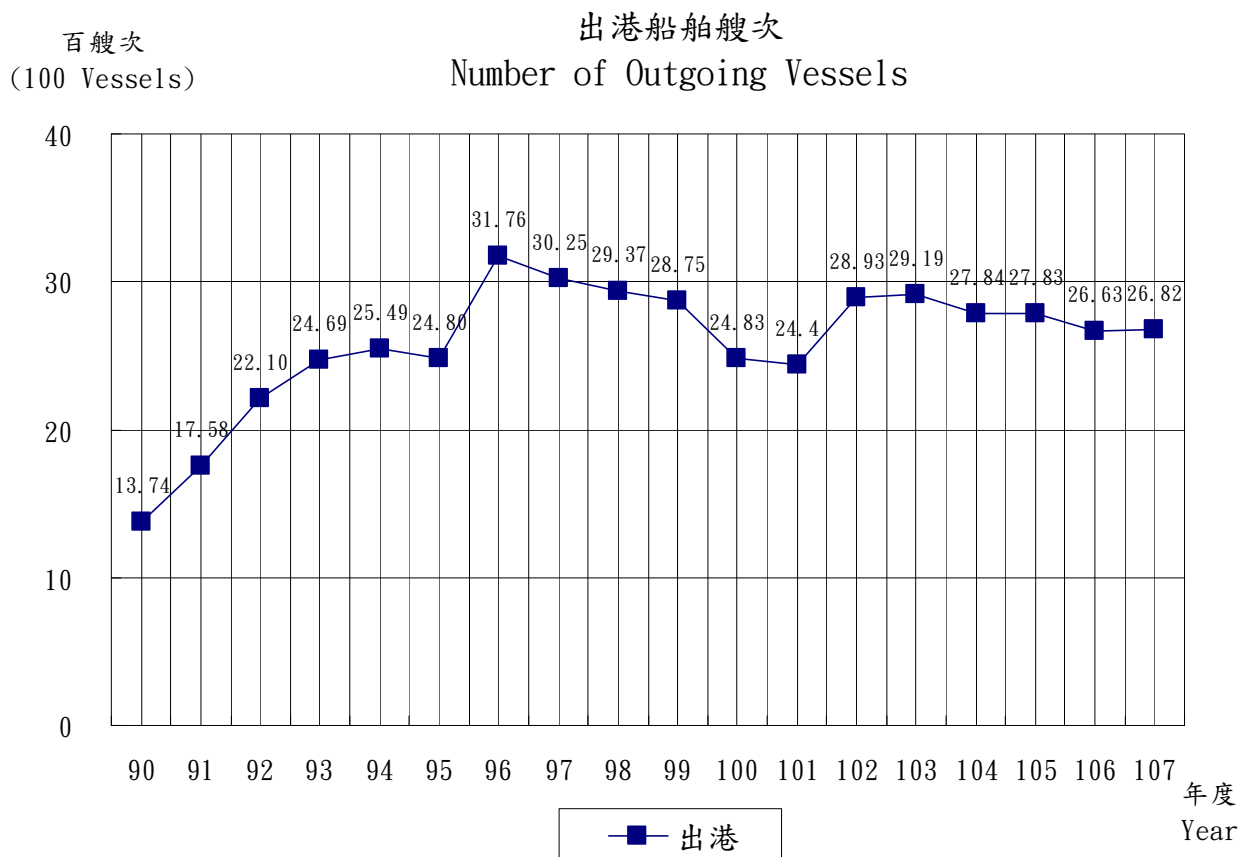
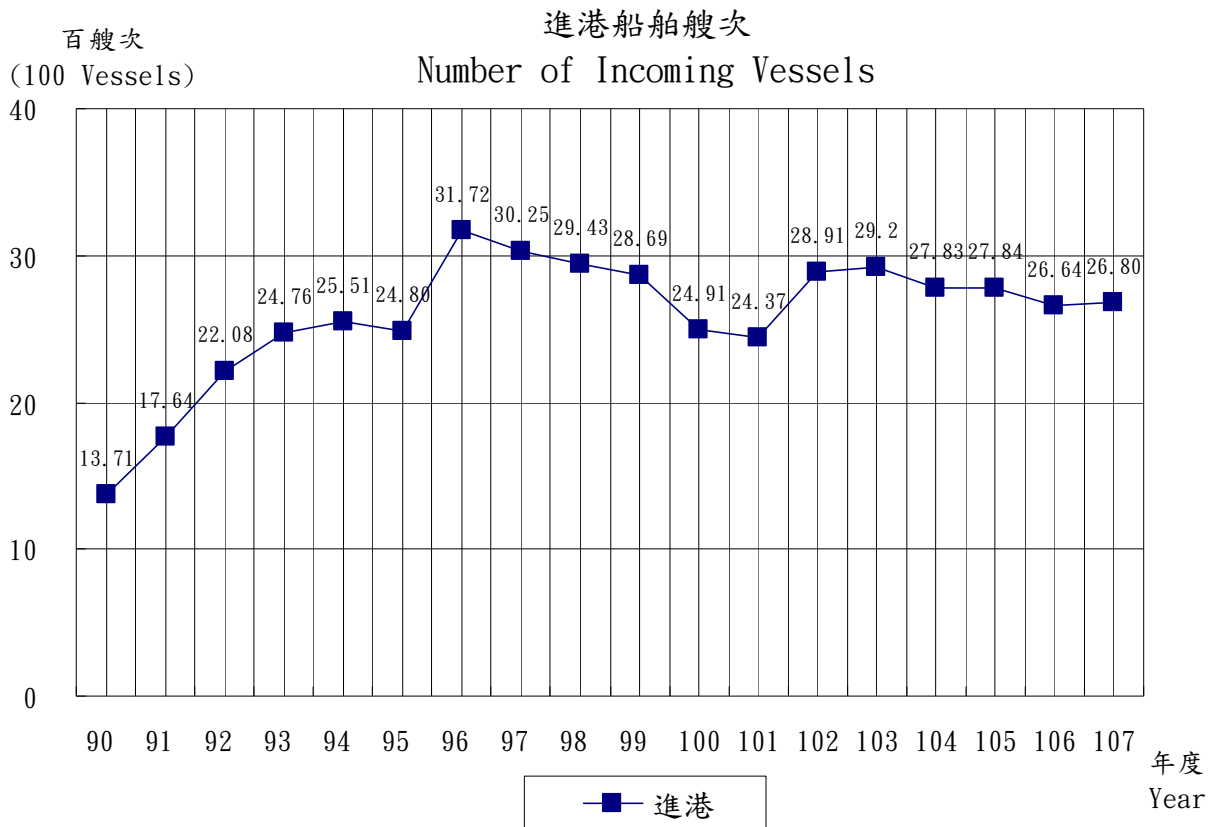
(3) Machines and Instruments: 16 machines and instruments, one machine less than the previous year.

(4) Vehicles: 41 vehicles, 4 vehicles more than the previous year.

Table 1: The business volume comparison table of Taiwan harbors in 2018

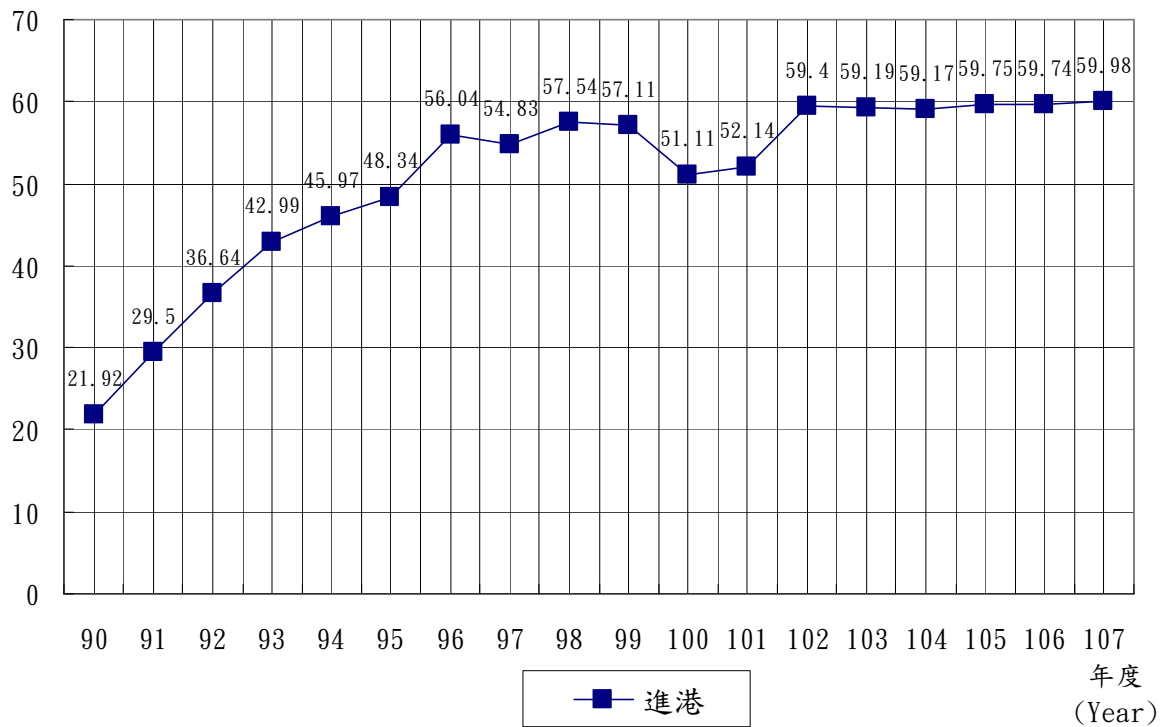
Harbor	Incoming Vessels				Cargo throughput		Cargo Tonnage Handled	
	Vessels	%	Gross Tonnage	%	Tons	%	Revenue Tons	%
Total	40,652	100.00%	863,649,756	100.00%	325,781,727	100.00%	822,958,051	100.00%
Mailiao	2,680	6.59%	59,980,231	6.94%	74,247,786	22.79%	74,390,735	9.04%
Heping	331	0.81%	5,338,872	0.62%	7,715,132	2.37%	7,715,204	0.94%
Kaohsiung	17,772	43.72%	455,119,748	52.70%	118,797,570	36.47%	458,925,457	55.77%
Keelung	5,678	13.97%	95,584,764	11.07%	17,281,501	5.30%	61,894,668	7.52%
Taichung	7,713	18.97%	135,080,625	15.64%	74,092,991	22.74%	129,356,662	15.72%
Hualien	1,178	2.90%	9,222,550	1.07%	8,740,957	2.68%	9,033,810	1.10%
Suao	530	1.30%	6,753,440	0.78%	4,490,325	1.38%	4,772,520	0.58%
Anping	485	1.19%	3,594,767	0.42%	1,469,077	0.45%	1,444,518	0.18%
Taipei	4,285	10.54%	92,974,759	10.77%	18,946,388	5.82%	75,424,477	9.17%

Port Information Source: Annual Statistical Report of Kaohsiung Port



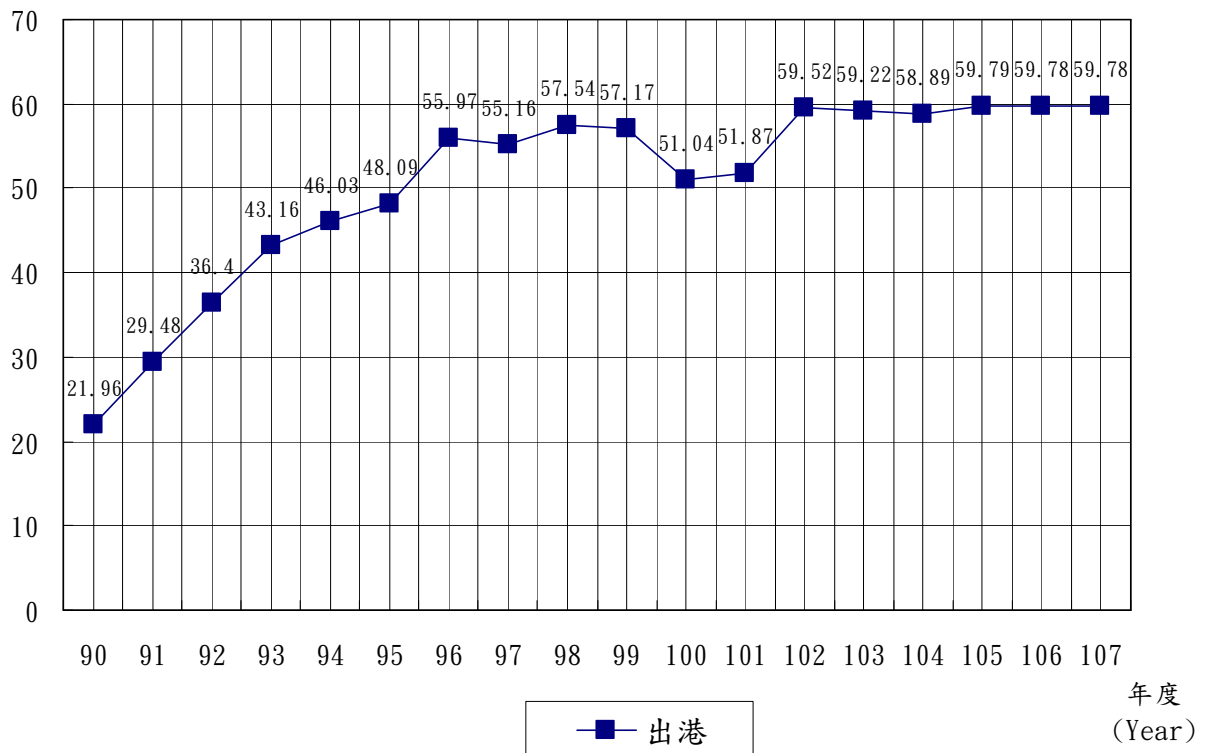
百萬總噸  
(Million GTs)

### 進港船舶總噸位 Gross Tonnage of Incoming Vessels



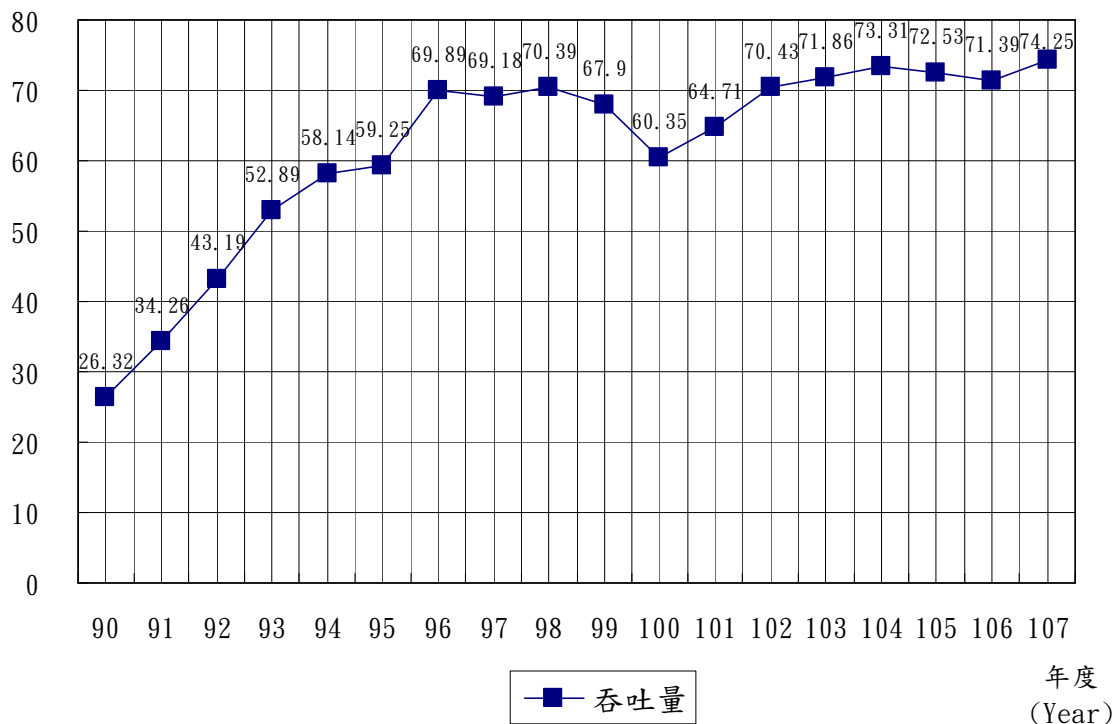
百萬總噸  
(Million GTs)

### 出港船舶總噸位 Gross Tonnage of Outgoing Vessels



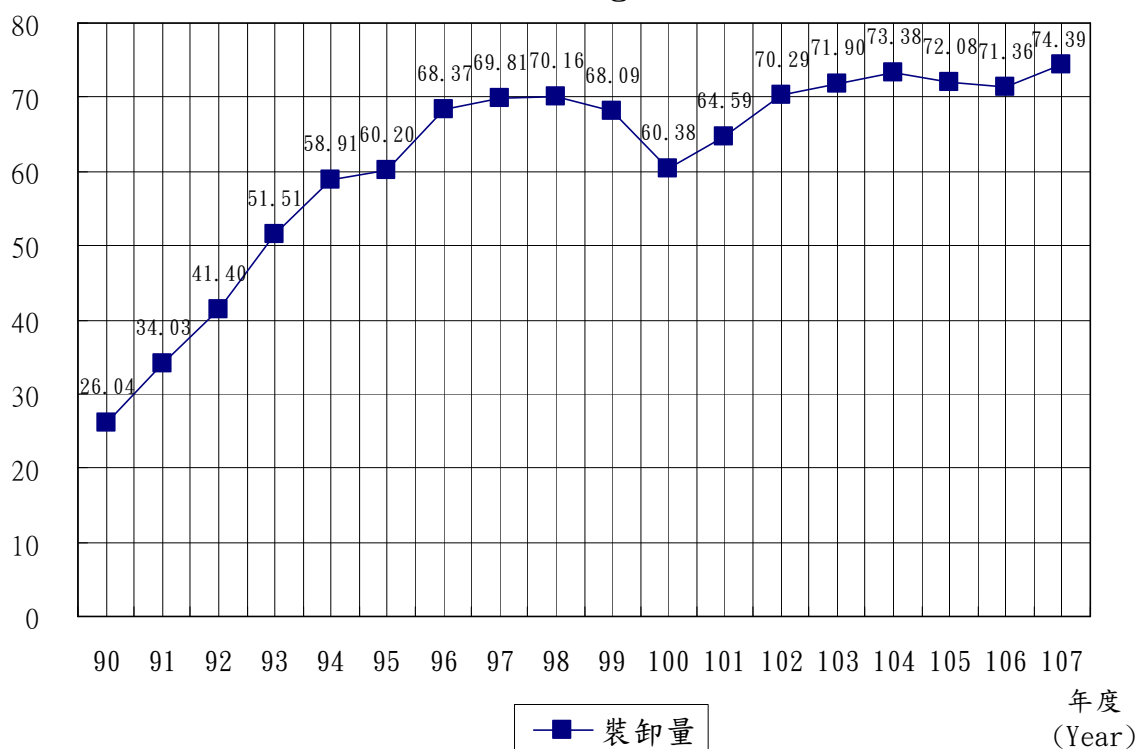
百萬公噸  
(Million MT)

### 貨物吞吐量 Amount of Cargoes Throughput



百萬公噸  
(Million MT)

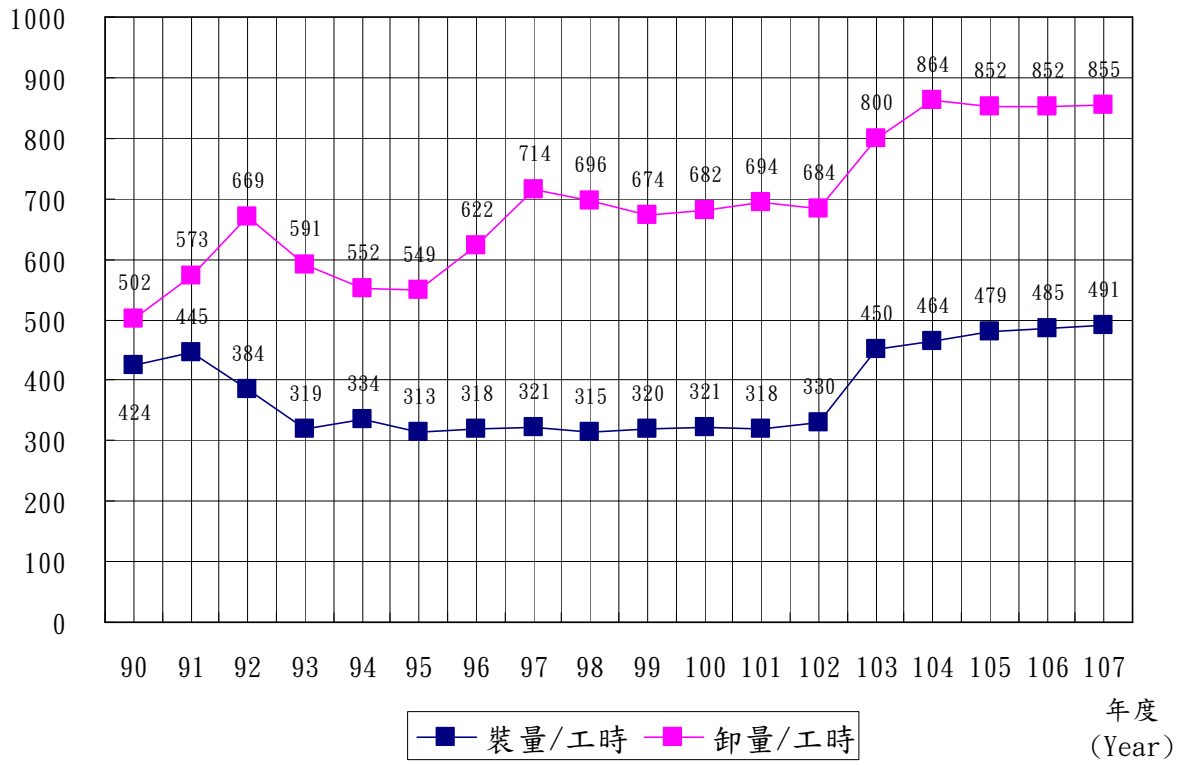
### 貨物裝卸量 Volume of Cargoes Handled





量/時  
(V/H)

### 貨物裝卸效率 Efficiency of Cargoes Handled



### 第三篇 統計要覽

#### 一、港務

#### 附表一 進出港輪船運輸量

艘次單位：次  
總噸位單位：噸

年 (月) 別 Year and Month	進 港					
	總 計		Incoming		國 外	
	Total		Domestic		Foreign	
	艘 次	總 噸 位	艘 次	總 噸 位	艘 次	總 噸 位
V.	G. T.	V.	G. T.	V.	G. T.	
2001	1,371	21,920,703	119	1,042,767	1,252	20,877,936
2002	1,764	29,501,874	201	1,980,906	1,563	27,520,968
2003	2,208	36,644,322	317	2,499,394	1,891	34,144,928
2004	2,476	42,992,935	473	2,439,657	2,003	40,553,278
2005	2,551	45,970,534	432	2,775,256	2,119	43,195,278
2006	2,480	48,335,727	244	2,537,218	2,236	45,798,509
2007	3,172	56,044,562	198	2,211,301	2,974	53,833,261
2008	3,025	54,825,457	99	1,089,860	2,926	53,735,597
2009	2,943	57,535,569	109	859,869	2,834	56,675,700
2010	2,869	57,105,381	138	1,280,329	2,731	55,825,052
2011	2,491	51,112,185	122	1,134,164	2,369	49,978,021
2012	2,437	52,143,234	119	1,045,506	2,318	51,097,728
2013	2,891	59,397,052	120	1,080,033	2,771	58,317,019
2014	2,920	59,187,771	112	821,171	2,808	58,366,600
2015	2,783	59,173,618	89	561,970	2,694	58,611,648
2016	2,784	59,750,426	77	521,862	2,707	59,228,564
2017	2,664	59,737,619	70	413,033	2,594	59,324,586
2018	2,680	59,980,231	71	479,786	2,609	59,500,445
一 月(Jan.)	242	5,407,426	6	73,016	236	5,334,410
二 月(Feb.)	228	4,777,156	8	50,591	220	4,726,565
三 月(Mar.)	227	4,900,927	4	41,424	223	4,859,503
四 月(Apr.)	216	4,786,171	6	41,397	210	4,744,774
五 月(May)	229	5,172,694	6	35,817	223	5,136,877
六 月(June)	227	5,398,963	5	18,596	222	5,380,367
七 月(July)	194	4,600,385	8	51,686	186	4,548,699
八 月(Aug.)	206	4,936,294	3	12,991	203	4,923,303
九 月(Sep.)	217	5,040,314	8	57,219	209	4,983,095
十 月(Oct.)	240	4,769,521	4	8,395	236	4,761,126
十一月(Nov.)	236	5,206,765	6	31,938	230	5,174,827
十二月(Dec.)	218	4,983,615	7	56,716	211	4,926,899

資料來源：麥寮工業區專用港管理股份有限公司。

**3rd Statistics Tables**  
**一、Harbor Management**

**Table 1. Tonnage of Imports and Exports carried by Incoming and Outgoing Vessels**

Unit : V. , Ton

出		港			
總 計		Outgoing			
Total		國 內		國 外	
		Domestic		Foreign	
艘 次	總 噸 位	艘 次	總 噸 位	艘 次	總 噸 位
V.	G. T.	V.	G. T.	V.	G. T.
1,374	21,963,166	1,035	16,364,343	339	5,598,823
1,758	29,480,038	1,576	26,416,968	182	3,063,070
2,210	36,397,967	569	6,905,358	1,641	29,492,609
2,469	43,162,045	903	11,998,188	1,566	31,163,857
2,549	46,033,186	488	6,159,527	2,061	39,873,659
2,480	48,094,049	234	2,318,874	2,246	45,775,175
3,176	55,968,701	206	2,707,465	2,970	53,261,236
3,025	55,161,194	103	1,647,650	2,922	53,513,544
2,937	57,542,817	122	1,028,836	2,815	56,513,981
2,875	57,165,600	136	1,351,187	2,739	55,814,413
2,483	51,040,986	115	1,242,957	2,368	49,798,029
2,440	51,873,091	125	1,097,510	2,315	50,775,581
2,893	59,522,852	108	846,682	2,785	58,676,170
2,919	59,222,587	115	901,866	2,804	58,320,721
2,784	58,887,018	105	755,438	2,679	58,131,580
2,783	59,794,434	85	654,369	2,698	59,140,065
2,663	59,779,242	74	557,844	2,589	59,221,398
2,682	59,777,299	69	417,352	2,613	59,359,947
245	5,611,951	6	42,012	239	5,569,939
224	4,687,214	7	53,795	217	4,633,419
232	4,976,064	5	36,272	227	4,939,792
214	4,553,113	6	54,929	208	4,498,184
232	5,368,299	6	55,827	226	5,312,472
226	5,324,679	5	20,419	221	5,304,260
195	4,463,710	9	52,110	186	4,411,600
205	5,072,881	3	12,991	202	5,059,890
221	5,059,592	7	27,847	214	5,031,745
239	5,003,548	5	8,441	234	4,995,107
230	5,008,835	3	12,991	227	4,995,844
219	4,647,413	7	39,718	212	4,607,695

附表二 進港輪船國籍

總噸位單位：噸

年(月)別 Year and Month	總計 Total		巴拿馬 Panama		中華民國 R.O.C		香港 Hong Kong	
	艘次 No. of Vessels	總噸位 G. T.	艘次 No. of Vessels	總噸位 G. T.	艘次 No. of Vessels	總噸位 G. T.	艘次 No. of Vessels	總噸位 G. T.
2001	1,371	21,920,703	555	9,399,523	109	1,040,744	106	1,120,430
2002	1,764	29,501,874	640	11,731,225	162	1,841,138	50	1,314,824
2003	2,208	36,644,322	763	12,058,096	298	2,687,272	117	1,703,546
2004	2,476	42,992,935	702	9,784,951	463	2,745,771	154	1,768,672
2005	2,551	45,970,534	703	10,159,490	414	2,727,265	212	3,070,868
2006	2,480	48,335,727	722	11,870,852	223	2,169,971	200	3,079,916
2007	3,172	56,044,562	1,001	15,276,041	160	1,845,671	201	5,313,733
2008	3,025	54,825,457	935	15,104,336	97	1,102,133	243	7,237,228
2009	2,943	57,535,569	754	12,941,788	109	967,852	376	9,006,375
2010	2,869	57,105,381	642	11,587,768	148	1,430,540	579	9,624,392
2011	2,491	51,112,185	521	9,279,356	133	1,281,149	446	6,307,484
2012	2,437	52,143,234	374	6,993,865	134	1,142,073	445	6,154,151
2013	2,891	59,397,052	408	9,754,822	167	1,536,448	518	6,797,245
2014	2,920	59,187,771	359	8,046,319	235	2,102,167	491	6,967,542
2015	2,783	59,173,618	301	7,008,656	260	2,655,412	464	7,400,281
2016	2,784	59,750,426	387	9,679,838	248	2,684,317	431	6,243,014
2017	2,664	59,737,619	392	10,230,275	221	2,656,466	383	4,834,748
2018	2,680	59,980,231	413	10,829,243	205	2,558,887	389	5,507,448
一月(Jan.)	242	5,407,426	36	702,269	16	195,548	33	332,106
二月(Feb.)	228	4,777,156	27	462,571	17	212,909	37	783,043
三月(Mar.)	227	4,900,927	32	782,873	16	202,390	33	431,533
四月(Apr.)	216	4,786,171	33	701,986	15	174,723	38	436,388
五月(May)	229	5,172,694	32	975,580	15	189,002	35	404,397
六月(June)	227	5,398,963	40	999,125	17	199,677	33	648,980
七月(July)	194	4,600,385	32	1,222,881	18	227,614	31	427,659
八月(Aug.)	206	4,936,294	33	936,327	17	244,836	29	624,432
九月(Sep.)	217	5,040,314	35	1,125,525	19	237,102	29	219,865
十月(Oct.)	240	4,769,521	43	906,662	18	213,358	30	356,882
十一月(Nov.)	236	5,206,765	33	990,487	19	230,411	33	418,787
十二月(Dec.)	218	4,983,615	37	1,022,957	18	231,317	28	423,376

資料來源：麥寮工業區專用港管理股份有限公司

**Table 2. Number of Incoming Vessels by Registered Nationality**

Unit : Vessel;Ton

新加坡 Singapore		南 韓 Rep. Of Korea		賴 比 瑞 亞 Liberia		其 他 Others	
艘次	總噸位	艘次	總噸位	艘次	總噸位	艘次	總噸位
No. of Vessels	G. T.	No. of Vessels	G. T.	No. of Vessels	G. T.	No. of Vessels	G. T.
80	1,364,884	155	540,676	113	2,153,091	253	6,301,355
132	2,156,932	258	805,547	121	2,207,414	401	9,444,794
127	2,916,450	252	958,336	118	3,255,363	533	13,065,259
192	4,529,051	185	871,648	229	9,538,582	551	13,754,260
321	7,109,280	246	1,176,695	221	10,340,691	434	11,386,245
250	4,477,255	280	1,416,734	329	12,625,913	476	12,695,086
314	4,739,115	509	2,217,131	359	10,699,151	628	15,953,720
290	5,223,831	473	2,380,343	292	8,553,342	695	15,224,244
272	5,275,676	333	1,340,747	294	10,798,873	805	17,204,258
253	5,319,623	292	1,862,746	222	10,631,574	733	16,648,738
217	5,113,297	196	1,251,014	228	11,831,554	750	16,048,331
197	3,820,661	136	757,618	282	16,720,978	869	16,553,888
229	5,032,853	166	1,064,584	244	14,832,412	1,159	20,378,688
188	4,187,219	166	905,344	258	16,551,795	1,223	20,427,385
166	4,362,166	158	944,016	233	15,615,746	1,201	21,187,341
132	3,122,583	188	1,072,671	245	16,962,512	1,153	19,985,491
113	3,175,420	190	1,220,179	222	15,631,126	1,143	21,989,405
121	3,197,909	213	962,306	237	17,706,381	1,102	19,218,057
13	182,894	14	75,109	25	1,806,907	105	2,112,593
13	419,041	16	68,228	17	1,136,097	101	1,695,267
13	354,350	21	86,968	22	1,660,310	90	1,382,503
4	57,830	18	81,426	16	1,487,055	92	1,846,763
11	379,340	26	117,145	21	1,510,668	89	1,596,562
8	178,139	13	56,932	22	1,751,645	94	1,564,465
10	302,963	17	75,180	16	1,124,379	70	1,219,709
10	233,520	16	74,474	17	1,142,636	84	1,680,069
7	159,332	21	91,201	23	1,551,800	83	1,655,489
10	370,184	21	99,009	17	1,286,061	101	1,537,365
15	412,388	12	58,900	22	1,500,764	102	1,595,028
7	147,928	18	77,734	19	1,748,059	91	1,332,244

附表三 進港輪船種類

單位：艘次

年(月)別	總計	油輪	液化輪	貨櫃輪	化學輪
Year and Month	Total	Tankers	Liquid Chemical Tankers	Containers	Chemical Tankers
2001	1,371	298	12	135	702
2002	1,764	490	4	213	818
2003	2,208	1,054	506	223	208
2004	2,476	1,358	597	217	35
2005	2,551	1,433	602	193	18
2006	2,480	1,501	399	246	14
2007	3,172	1,857	683	222	53
2008	3,025	1,348	869	183	80
2009	2,943	1,003	393	238	631
2010	2,869	941	375	253	795
2011	2,491	797	290	197	788
2012	2,437	795	248	113	892
2013	2,891	942	295	217	885
2014	2,920	970	427	50	841
2015	2,783	867	409	-	575
2016	2,784	723	409	-	421
2017	2,664	679	371	-	305
2018	2,680	639	407	-	229
一月(Jan.)	242	61	35	-	23
二月(Feb.)	228	46	37	-	20
三月(Mar.)	227	53	31	-	22
四月(Apr.)	216	48	20	-	21
五月(May)	229	55	29	-	25
六月(June)	227	60	28	-	23
七月(July)	194	51	23	-	13
八月(Aug.)	206	44	37	-	17
九月(Sep.)	217	50	39	-	14
十月(Oct.)	240	60	40	-	20
十一月(Nov.)	236	58	42	-	15
十二月(Dec.)	218	53	46	-	16

資料來源：麥寮工業區專用港管理股份有限公司

**Table 3. Number of Incoming Vessels by Kind**

				Unit : Vessel
一般貨輪	散裝輪	煤炭輪	其 他	
Ordinary Cargoes	Cargos in Bulk	COAL	Others	
55	50	102	17	
47	55	69	68	
99	47	29	42	
97	55	58	59	
119	80	64	42	
134	99	47	40	
134	143	38	42	
121	163	26	235	
448	166	8	56	
283	161	3	58	
219	145	8	47	
179	135	9	66	
158	149	11	234	
116	154	13	349	
129	156	14	633	
110	130	14	977	
91	131	12	1,075	
110	142	8	1,145	
8	11	1	103	
10	11	1	103	
6	15	-	100	
10	9	1	107	
10	13	-	97	
8	13	1	94	
9	10	1	87	
10	15	-	83	
12	13	1	88	
11	7	1	101	
10	17	-	94	
6	8	1	88	

附表四 進港輪船航次

單位：航次

年(月)別 Year and Month	國內						
	總計 Total	小計 Sub Total	高雄 Kaohsiung	台中 Taichung	台北 Taipei	基隆 Keelung	其他 Others
2001	1,371	119	29	15	21	41	13
2002	1,764	201	45	34	64	17	41
2003	2,208	317	64	11	125	20	97
2004	2,476	473	106	18	75	26	248
2005	2,551	432	64	6	61	19	282
2006	2,480	244	42	5	81	18	98
2007	3,172	198	59	4	78	12	45
2008	3,025	99	36	1	34	8	20
2009	2,943	109	48	2	2	6	51
2010	2,869	138	65	4	7	28	34
2011	2,491	122	50	3	9	9	51
2012	2,437	119	55	2	4	5	53
2013	2,891	120	57	5	5	1	52
2014	2,920	112	40	10	4	-	58
2015	2,783	89	55	4	3	1	26
2016	2,784	77	31	11	1	1	33
2017	2,664	70	30	7	4	1	28
2018	2,680	71	12	11	2	-	46
一月(Jan.)	242	6	1	-	2	-	3
二月(Feb.)	228	8	1	4	-	-	3
三月(Mar.)	227	4	-	1	-	-	3
四月(Apr.)	216	6	1	-	-	-	5
五月(May)	229	6	3	-	-	-	3
六月(June)	227	5	1	1	-	-	3
七月(July)	194	8	1	2	-	-	5
八月(Aug.)	206	3	-	-	-	-	3
九月(Sep.)	217	8	1	1	-	-	6
十月(Oct.)	240	4	-	-	-	-	4
十一月(Nov.)	236	6	2	2	-	-	2
十二月(Dec.)	218	7	1	-	-	-	6

資料來源：麥寮工業區專用港管理股份有限公司



Table 4. Number of Incoming Vessels by Line of Navigation

Unit : Voyage Jnit : Voyage

小計	國					外				其他
	香港	日本	南韓	菲律賓	澳洲	沙烏地阿 拉伯	越南	中國		
Sub Total	Hong kong	Japain	Korea	Philippine	Australia	Saudiarabia	Vietnam	China	Others	
1,252	179	655	229	26	27	30	7		99	
1,563	400	551	304	24	31	31	20		202	
1,891	738	281	372	86	46	52	25	5	286	
2,003	669	268	426	140	88	86	20	15	291	
2,119	583	371	470	76	83	87	45	61	343	
2,236	589	399	445	87	93	120	57	60	386	
2,974	856	551	688	117	111	128	77	67	379	
2,926	951	482	604	111	114	180	94	57	333	
2,834	723	279	451	115	123	128	82	580	353	
2,731	591	140	371	119	122	152	50	866	320	
2,369	459	102	277	130	97	108	47	840	309	
2,318	305	59	245	128	92	107	53	1,078	251	
2,771	355	60	242	201	102	126	58	1,332	295	
2,808	188	96	252	210	89	105	55	1,497	316	
2,694	94	92	268	184	95	87	90	1,414	370	
2,707	81	123	405	232	109	68	86	1,164	439	
2,594	55	139	407	220	91	66	50	1,058	508	
2,609	44	147	482	140	81	63	76	1,053	523	
236	6	18	31	26	4	5	7	90	49	
220	6	17	29	10	5	6	11	94	42	
223	4	14	43	19	5	5	4	89	40	
210	4	9	45	12	7	6	8	83	36	
223	3	10	35	14	8	5	8	91	49	
222	4	15	31	11	8	6	10	88	49	
186	4	9	33	16	7	3	4	70	40	
203	4	10	38	8	7	6	6	88	36	
209	1	11	48	9	9	7	2	80	42	
236	3	11	60	7	6	5	8	91	45	
230	2	14	44	4	9	5	4	99	49	
211	3	9	45	4	6	4	4	90	46	

## 附表五 出 港 輪 船 航 次

單位：航次

年(月)別 Year and Month	國內						
	Domestic						
	總計	小計	高雄	台北	台中	基隆	其他
Total	Sub Total	Kaohsiung	Taipei	Taichung	Keelung	Others	
2001	1,374	1,035	3	3	11	21	997
2002	1,758	1,576	8	11	33	6	1,518
2003	2,210	569	79	96	4	1	389
2004	2,469	903	111	67	6	5	714
2005	2,549	488	69	67	5	2	345
2006	2,480	234	98	39	7	-	90
2007	3,176	206	91	67	2	5	41
2008	3,025	103	84	2	2	1	14
2009	2,937	122	79	3	3	8	29
2010	2,875	136	72	1	2	26	35
2011	2,483	115	60	-	2	1	52
2012	2,440	125	74	-	2	-	49
2013	2,893	108	67	2	2	-	37
2014	2,919	115	55	4	9	2	45
2015	2,784	105	79	1	2	1	22
2016	2,783	85	48	-	7	1	29
2017	2,663	74	31	7	4	-	32
2018	2,682	69	16	1	7	-	45
一月(Jan.)	245	6	2	-	-	-	4
二月(Feb.)	224	7	-	1	3	-	3
三月(Mar.)	232	5	-	-	-	-	5
四月(Apr.)	214	6	1	-	-	-	5
五月(May)	232	6	1	-	-	-	5
六月(June)	226	5	2	-	-	-	3
七月(July)	195	9	2	-	2	-	5
八月(Aug.)	205	3	1	-	-	-	2
九月(Sep.)	221	7	3	-	-	-	4
十月(Oct.)	239	5	1	-	2	-	2
十一月(Nov.)	230	3	1	-	-	-	2
十二月(Dec.)	219	7	2	-	-	-	5

資料來源：麥寮工業區專用港管理股份有限公司

**Table 5. Number of Outgoing Vessels by Line of Navigation**

Unit : Voyage

小計	國 外									其他
	日本	香港	南韓	新加坡	澳洲	菲律賓	越南	中國	沙烏地阿拉伯	
Sub Total	Japan	Hong kong	Korea	Singapore	Australia	Philippine	Vietnam	China	Saudi arabia	Others
339	186	52	59	16	4	2	2	-	2	16
182	16	89	31	15	-	6	5	-	7	13
1,641	108	726	296	65	49	101	26	-	63	207
1,566	226	509	279	63	74	121	25	8	80	181
2,061	318	693	338	160	81	97	53	40	67	214
2,246	306	801	364	193	78	87	74	41	81	221
2,970	430	1,067	546	219	83	114	76	81	102	252
2,922	398	1,146	401	247	79	117	75	129	148	182
2,815	265	769	333	251	95	155	90	496	121	240
2,739	207	487	320	280	115	125	72	745	137	251
2,368	158	322	230	335	96	157	75	677	96	222
2,315	108	192	168	337	106	156	110	803	106	229
2,785	59	274	187	400	106	222	111	1,066	112	248
2,804	61	120	199	430	107	227	117	1,198	93	252
2,679	69	46	211	367	116	218	124	1,145	78	305
2,698	116	20	304	279	112	273	105	1,064	45	380
2,589	131	19	282	300	90	218	77	1,042	52	378
2,613	147	28	372	476	81	133	94	1,058	21	203
239	17	4	25	41	4	22	8	94	4	20
217	19	4	19	38	4	10	12	90	4	17
227	13	3	38	35	7	18	6	92	4	11
208	9	1	36	31	5	13	9	84	1	19
226	10	-	32	39	9	14	9	91	1	21
221	14	5	21	45	8	11	10	86	1	20
186	14	1	26	36	8	10	4	75	1	11
202	8	2	35	38	8	8	8	84	1	10
214	10	1	38	43	9	7	4	83	-	19
234	15	2	43	47	7	5	9	90	2	14
227	8	3	28	46	7	8	6	96	1	24
212	10	2	31	37	5	7	9	93	1	17

附表六 進港輪船噸級與在港停泊時間

單位：艘次：噸

停泊時間 Mooring's Time	輪 船				
	合計Total	Classification of			
	艘次 No. of Vessels	未滿1000噸 Under1,000G.T.	1,000-4,999噸 1,000-4,999G.T.	5,000-9,999噸 5,000-9,999G.T.	10,000-19,999噸 10,000-19,999G.T.
24小時以內 Under 24hours	841	14	547	166	47
25-48小時 25-48hours	1,347	1	352	405	113
49-72小時 49-72hours	273		24	63	39
73-96小時 73-96hours	81		3	4	25
97-120小時 97-120hours	58			1	16
121-144小時 121-144hours	31				7
145-168小時 145-168hours	24		1		4
169-192小時 169-192hours	12			1	1
193小時以上 over193hours	15		2		1
年(月)別 Year and Month					
2001	1,371	69	628	196	174
2002	1,764	129	677	318	288
2003	2,208	243	870	284	352
2004	2,476	298	913	267	404
2005	2,551	238	939	364	393
2006	2,480	139	881	328	408
2007	3,172	82	1,368	576	334
2008	3,025	92	1,285	528	297
2009	2,943	72	1,079	619	331
2010	2,869	79	883	740	353
2011	2,491	66	718	628	361
2012	2,437	68	743	566	334
2013	2,891	61	877	751	370
2014	2,920	62	1,056	670	335
2015	2,783	38	1,022	624	267
2016	2,784	31	975	638	239
2017	2,664	25	884	613	248
2018	2,680	13	929	637	255
一月(Jan.)	242	-	78	58	23
二月(Feb.)	228	3	77	59	25
三月(Mar.)	227	-	83	57	22
四月(Apr.)	216	1	75	56	16
五月(May)	229	1	84	53	23
六月(June)	227	2	79	47	21
七月(July)	194	2	68	38	21
八月(Aug.)	206	-	70	50	19
九月(Sep.)	217	-	74	51	22
十月(Oct.)	240	3	79	63	20
十一月(Nov.)	236	1	80	54	25
十二月(Dec.)	218	-	82	51	18

資料來源：麥寮工業區專用港管理股份有限公司

**Table 6. Number of Incoming Vessels by Gross Tonnage And Time of Vessels Mooring in Port**

Unit : Vessels;Ton

噸 位 分 類 Vessels' Gross Tonnage				平均停泊時間(天) Average Mooring's Time(Day)
20,000-39,999噸 20,000-39,999G.T.	40,000-59,999噸 40,000-59,999G.T.	60,000-99,999噸 60,000-99,999G.T.	滿100,000噸以上 Over100,000G.T.	
49	10	8		0.77
272	100	41	63	1.43
44	50	28	25	2.40
4	15	25	5	3.50
3	4	33	1	4.55
3	3	17	1	5.44
	2	17		6.48
2	2	6		7.47
		12		10.47
159	75	47	23	1.67
170	63	70	49	1.36
237	71	86	65	1.21
341	87	91	75	1.24
361	80	88	88	1.30
463	94	82	85	1.25
463	139	115	95	1.27
450	183	100	90	1.28
456	186	102	98	1.31
413	186	129	86	1.33
364	161	120	73	1.54
360	142	137	87	1.49
411	163	170	88	1.42
343	180	185	89	1.46
385	172	179	96	1.55
496	157	144	104	1.51
449	180	173	92	1.60
375	187	188	96	1.63
43	20	12	8	1.69
24	14	20	6	1.60
30	12	14	9	1.55
34	11	14	9	1.54
28	14	17	9	1.61
35	18	15	10	1.70
22	21	15	7	1.58
28	15	15	9	1.73
29	16	17	8	1.73
39	17	14	5	1.39
34	16	19	7	1.74
29	13	16	9	1.68

附表七 進出港貨物國輪外輪承運量

單位：公噸

年 (月) 別	總 計			
	國 內		國 外	
	Domestic		Foreign	
	國輪	外輪	國輪	外輪
Year and Month	Domestic V.	Foreign V.	Domestic V.	Foreign V.
2001	697,005	69,885	102,428	25,450,728
2002	1,204,083	93,651	307,286	32,657,186
2003	2,406,163	3,626	665,865	40,111,760
2004	2,692,184	97,637	402,932	49,695,779
2005	2,681,181	2,695	198,222	55,259,819
2006	2,436,106	1,771	52,560	56,764,224
2007	1,880,616	65,620	7,771	67,939,596
2008	602,519	-	231,435	68,346,541
2009	479,961	46,009	167,193	69,698,054
2010	743,974	61,375	115,897	66,982,935
2011	618,654	151,808	87,321	59,487,365
2012	500,327	163,843	255,040	63,788,577
2013	243,416	328,690	1,108,102	68,746,693
2014	413,010	377,475	1,534,523	69,533,865
2015	617,735	199,368	2,068,879	70,420,807
2016	541,625	99,815	2,143,071	69,745,119
2017	460,980	198,606	2,090,730	68,637,358
2018	626,806	154,827	1,903,033	71,563,121
一月(Jan.)	41,324	32,934	161,897	6,209,140
二月(Feb.)	31,208	6,795	108,610	5,730,886
三月(Mar.)	40,681	33,464	199,910	5,769,375
四月(Apr.)	67,982	-	144,560	5,605,440
五月(May)	51,199	6,899	114,955	6,458,732
六月(June)	41,697	10,291	128,315	6,497,980
七月(July)	65,054	3,500	177,500	5,251,760
八月(Aug.)	53,196	-	174,715	6,242,064
九月(Sep.)	62,168	29,633	186,202	6,341,281
十月(Oct.)	33,148	24,311	174,455	5,163,655
十一月(Nov.)	70,463	3,500	159,640	6,148,539
十二月(Dec.)	68,686	3,500	172,274	6,144,269

資料來源：葵寮工業區專用港管理股份有限公司

**Table 7. Tonnage of Imports & Exports Carried by Domestic and Foreign Vessels**

Unit : M.T.

進 港				出 港			
Import				Export			
國內		國外		國內		國外	
Domestic		Foreign		Domestic		Foreign	
國輪	外輪	國輪	外輪	國輪	外輪	國輪	外輪
Domestic V.	Foreign V.	Domestic V.	Foreign V.	Domestic V.	Foreign V.	Domestic V.	Foreign V.
96,168	-	6,366	22,229,919	600,837	69,885	96,062	3,220,809
45,629	-	65,847	26,302,254	1,158,454	93,651	241,439	6,354,932
50,564	-	430,827	31,583,522	2,355,599	3,626	235,038	8,528,238
112,594	-	184,888	39,008,826	2,579,590	97,637	218,044	10,686,953
131,616	-	69,535	41,164,939	2,549,565	2,695	128,687	14,094,880
66,156	-	-	42,081,790	2,369,950	1,771	52,560	14,682,434
42,350	-	-	49,454,178	1,838,266	65,620	7,771	18,485,418
22,800	-	231,435	47,148,952	579,719	-	-	21,197,589
17,341	-	5,783	48,268,482	462,620	46,009	161,410	21,429,572
11,302	-	4,853	48,075,276	732,672	61,375	111,044	18,907,659
35,872	-	18,087	42,808,579	582,782	151,808	69,234	16,678,786
34,536	-	2,002	45,199,323	465,791	163,843	253,038	18,589,254
11,500	-	3,108	48,909,690	231,916	328,690	1,104,994	19,837,003
63,625	8,331	-	49,650,688	349,385	369,144	1,534,523	19,883,177
135,205	23,281	-	50,413,909	482,530	176,087	2,068,879	20,006,898
65,725	-	-	49,670,771	475,900	99,815	2,143,071	20,074,348
92,940	-	5,491	48,982,140	368,040	198,606	2,085,239	19,655,218
97,381	-	-	50,296,829	529,425	154,827	1,903,033	21,266,292
10,924	-	-	4,033,412	30,400	32,934	161,897	2,175,728
10,982	-	-	3,907,486	20,226	6,795	108,610	1,823,400
5,262	-	-	4,159,824	35,419	33,464	199,910	1,609,551
15,752	-	-	3,905,971	52,230	-	144,560	1,699,469
-	-	-	4,578,035	51,199	6,899	114,955	1,880,697
10,954	-	-	4,696,907	30,743	10,291	128,315	1,801,073
10,902	-	-	3,739,169	54,152	3,500	177,500	1,512,591
10,966	-	-	4,405,196	42,230	-	174,715	1,836,868
5,411	-	-	4,718,742	56,757	29,633	186,202	1,622,539
-	-	-	3,533,055	33,148	24,311	174,455	1,630,600
5,290	-	-	4,364,443	65,173	3,500	159,640	1,784,096
10,938	-	-	4,254,589	57,748	3,500	172,274	1,889,680

## 附表八 進 港 貨 物 （地區別）

單位：公噸

年 (月) 別 Year and Month	國 內					
	總 計	小 計	Domestic			
			花 蓮	蘇 澳	高 雄	其 他
	<u>Total</u>	<u>Sub Total</u>	<u>Hualien</u>	<u>Suauo</u>	<u>Kaohsiung</u>	<u>Others</u>
2001						
2002						
2003						
2004	39,039,900	112,594	112,405	-	189	-
2005	38,666,233	131,616	120,005	11,501	110	-
2006	42,147,951	66,156	65,906	-	250	-
2007	49,496,526	42,350	34,301	-	8,049	-
2008	47,403,187	22,800	22,800	-	-	-
2009	48,291,607	17,341	11,301	-	3,131	2,909
2010	48,091,430	11,302	11,302	-	-	-
2011	42,862,537	35,872	23,003	-	-	12,869
2012	45,235,863	34,536	34,536	-	-	-
2013	48,924,299	11,500	11,500	-	-	-
2014	49,722,645	71,956	11,501	-	54,707	5,748
2015	50,572,391	158,486	-	-	135,205	23,281
2016	49,736,498	65,725	-	-	65,725	-
2017	49,080,576	92,940	-	-	92,940	-
2018	50,394,205	97,381	-	-	97,381	-
一 月(Jan.)	4,044,335	10,924	-	-	10,924	-
二 月(Feb.)	3,918,467	10,982	-	-	10,982	-
三 月(Mar.)	4,165,085	5,262	-	-	5,262	-
四 月(Apr.)	3,921,722	15,752	-	-	15,752	-
五 月(May)	4,578,035	-	-	-	-	-
六 月(June)	4,707,862	10,954	-	-	10,954	-
七 月(July)	3,750,070	10,902	-	-	10,902	-
八 月(Aug.)	4,416,161	10,966	-	-	10,966	-
九 月(Sep.)	4,724,155	5,411	-	-	5,411	-
十月(Oct.)	3,533,055	-	-	-	-	-
十一月(Nov.)	4,369,732	5,290	-	-	5,290	-
十二月(Dec.)	4,265,526	10,938	-	-	10,938	-

資料來源：麥寮工業區專用港管理股份有限公司



**Table 8. Tonnage of Imports (by Region)**

Unit : M.T.

小計	Foreign									
	沙烏地阿拉伯	澳洲	科威特	中國大陸	伊朗	阿曼	阿拉伯聯合大公國	印尼	伊拉克	其他
Sub Total	Saudi arabia	Australia	Kuwait	China mainland	Iran	Oman	UAE	Indonesia	Iraq	Others
38,927,306	9,937,993	6,518,872	5,728,593	5,835,742	2,488,635	1,110,456	989,078	967,087	-	5,350,850
38,534,617	9,397,847	8,053,348	5,926,999	4,617,709	2,802,544	1,523,488	1,215,440	980,115	-	4,017,127
42,081,795	10,359,513	7,743,850	5,972,172	3,303,790	2,237,423	1,105,770	1,678,004	3,193,661	1,742,009	4,745,603
49,454,176	10,636,547	10,396,485	6,551,422	3,864,632	3,229,756	1,395,340	1,634,974	2,938,904	3,167,892	5,638,224
47,380,387	11,330,939	10,831,613	6,901,099	2,823,131	3,059,499	1,361,613	2,107,495	2,128,152	2,799,784	4,037,062
48,274,266	11,299,622	9,224,412	6,537,528	995,885	839,101	2,443,997	1,741,698	2,786,044	4,414,702	7,991,277
48,080,128	10,512,341	8,363,512	6,437,002	680,054	944,870	1,678,995	1,938,966	1,736,894	2,913,919	12,873,575
42,826,665	8,576,460	6,920,413	6,310,330	418,094	899,983	496,051	1,902,473	1,849,274	559,750	14,893,837
45,201,327	8,545,109	5,913,064	7,473,517	387,929	628,079	2,257,558	1,895,016	2,401,952	3,256,354	12,442,749
48,912,799	9,532,587	5,811,218	7,953,234	236,715	364,121	2,569,598	1,913,818	2,721,871	3,239,679	14,569,958
49,650,689	10,063,287	7,508,924	6,511,016	149,460	264,464	2,320,410	2,085,334	3,723,313	4,692,100	12,332,381
50,413,905	10,004,770	8,668,361	7,811,410	94,240	350,792	2,767,536	2,509,008	4,833,800	3,518,323	9,855,665
49,670,773	8,019,463	10,413,078	5,526,254	48,979	999,763	2,077,558	2,634,901	1,103,233	1,383,747	17,463,797
48,987,636	7,103,741	7,897,728	5,950,541	85,711	1,488,929	2,610,695	2,011,424	646,838	2,158,084	19,033,945
50,296,824	9,959,281	6,550,210	7,972,094	81,480	1,231,244	3,025,581	2,516,941	483,013	3,421,218	15,055,762
4,033,411	892,660	208,519	762,960	6,906	60,581	607,900	328,793	-	-	1,165,092
3,907,485	957,474	410,772	543,396	2,767	32,043	5,000	216,613	-	267,226	1,472,194
4,159,823	829,457	389,436	674,431	3,597	193,830	165,633	215,947	86,828	274,795	1,325,869
3,905,970	833,082	476,622	706,099	8,433	64,294	263,434	292,209	5,000	275,138	981,659
4,578,035	839,823	490,008	413,983	12,366	377,075	277,627	222,751	-	265,675	1,678,727
4,696,908	849,821	636,535	744,490	8,568	123,266	563,436	257,685	68,523	284,574	1,160,010
3,739,168	525,127	731,457	999,849	2,758	21,000	10,250	58,637	-	545,631	844,459
4,405,195	1,117,048	798,865	619,312	8,874	-	142,084	252,452	75,420	405,532	985,608
4,718,744	878,490	759,852	699,391	9,119	359,155	157,458	75,958	118,713	276,726	1,383,882
3,533,055	565,338	354,086	283,668	7,975	-	284,727	173,924	53,952	280,594	1,528,791
4,364,442	541,977	809,124	957,676	6,190	-	284,062	305,699	-	-	1,459,714
4,254,588	1,128,984	484,934	566,839	3,927	-	263,970	116,273	74,577	545,327	1,069,757

附表九 出 港 貨 物 (地區別)

單位：公噸

年 (月) 別 Year and Month	國 內						
	總 計	小 計	高 雄	台 北	蘇 澳	金 門	其 他
	<u>Total</u>	<u>Sub Total</u>	<u>Kaohsiung</u>	<u>Taipei</u>	<u>Suauo</u>	<u>Kin Men</u>	<u>Others</u>
2001							
2002							
2003							
2004	12,732,276	2,677,226	1,042,225	865,093	245,620	36,889	487,399
2005	16,238,493	2,544,987	1,745,019	552,503	117,365	44,994	85,106
2006	17,106,717	2,371,720	982,727	950,429	293,658	41,516	103,390
2007	20,397,075	1,903,888	191,066	1,371,077	207,043	11,106	123,596
2008	21,777,308	579,718	135,272	119,925	198,945	-	125,576
2009	22,099,608	508,627	138,788	13,531	178,803	-	177,505
2010	19,812,748	794,046	94,355	27,158	442,835	8,343	221,355
2011	17,482,609	734,589	118,674	16,099	435,112	-	164,704
2012	19,471,922	629,632	108,056	10,470	395,521	-	115,585
2013	21,502,598	560,607	107,961	14,570	239,882	-	198,194
2014	22,136,230	718,528	94,308	208,288	332,775	-	83,157
2015	22,734,392	658,618	129,827	132,267	336,029	-	60,495
2016	22,793,137	575,719	112,523	78,815	369,188	-	15,193
2017	22,307,097	566,644	95,960	150,889	286,775	-	33,020
2018	23,853,579	684,255	117,826	116,254	437,457	-	12,718
一 月(Jan.)	2,400,958	63,334	12,198	25,925	19,998	-	5,213
二 月(Feb.)	1,959,032	27,021	12,022	-	14,999	-	-
三 月(Mar.)	1,878,344	68,883	5,218	31,163	24,997	-	7,505
四 月(Apr.)	1,896,258	52,230	5,234	-	46,996	-	-
五 月(May)	2,053,751	58,099	17,105	-	40,994	-	-
六 月(June)	1,970,421	41,034	15,037	-	25,997	-	-
七 月(July)	1,747,742	57,652	8,655	-	48,997	-	-
八 月(Aug.)	2,053,814	42,231	5,237	-	36,994	-	-
九 月(Sep.)	1,895,131	86,390	15,261	29,633	41,496	-	-
十月(Oct.)	1,862,515	57,459	5,150	24,311	27,998	-	-
十一月(Nov.)	2,012,410	68,673	8,456	5,222	54,995	-	-
十二月(Dec.)	2,123,203	61,249	8,253	-	52,996	-	-

資料來源：麥寮工業區專用港管理股份有限公司

**Table 9. Tonnage of Exports (by Region)**

Unit : M.T. Unit : M.T.

小計	國				外					其他
	新加坡	中國大陸 China	菲律賓 Philippine	美國 United States	澳洲 Australia	印尼 Indonesia	香港 Hong kong	越南 Vietnam		
Sub Total	Singapore	mainland	Philippine	United States	Australia	Indonesia	Hong kong	Vietnam	Others	
10,055,050	1,607,450	2,321,149	1,545,807	968,526	586,238	60,360	1,166,288	-	1,799,232	
13,693,506	2,835,727	2,660,494	1,698,645	1,160,177	831,573	672,875	586,622	-	3,247,393	
14,734,997	3,046,986	2,950,357	1,082,112	849,629	1,305,700	642,518	663,592	1,556,389	2,637,714	
18,493,187	3,500,386	4,493,062	1,594,111	1,034,871	1,780,948	571,537	677,434	1,911,893	2,928,945	
21,197,590	4,033,206	6,639,235	1,173,748	729,939	1,482,649	809,143	348,332	1,979,365	4,001,973	
21,590,981	2,586,354	5,645,336	1,884,106	985,313	1,133,237	1,416,779	702,650	1,968,193	5,269,013	
19,018,702	2,911,250	5,420,436	1,850,026	677,894	972,573	1,655,019	545,449	1,179,653	3,806,402	
16,748,020	2,792,847	4,516,875	1,833,483	451,362	996,955	818,625	882,038	1,250,721	3,205,114	
18,842,290	4,424,542	4,677,789	3,139,983	462,303	889,843	691,498	805,829	1,305,396	2,445,107	
20,941,991	2,766,824	6,252,613	3,807,887	179,522	1,262,184	983,273	643,925	1,281,009	3,764,754	
21,417,702	3,352,735	6,234,205	4,202,815	472,689	1,235,974	343,656	755,310	1,129,670	3,690,648	
22,075,774	3,585,546	6,308,794	4,687,173	499,006	1,615,268	267,848	1,057,638	1,361,284	2,693,217	
22,217,418	3,333,923	6,418,943	6,416,732	314,692	1,271,564	198,787	572,861	665,815	3,024,101	
21,740,453	2,233,230	6,348,111	6,293,931	543,772	743,012	180,236	651,977	332,302	4,413,882	
23,169,324	2,377,832	6,304,879	4,555,463	545,819	1,025,524	260,635	678,415	448,236	6,972,521	
2,337,624	279,142	567,566	729,699	26,039	94,600	1,795	142,790	38,030	457,963	
1,932,011	115,751	543,397	647,353	74,321	63,010	1,669	63,807	45,204	377,499	
1,809,461	57,400	673,540	471,733	37,845	100,970	990	3,693	26,835	436,455	
1,844,028	102,201	511,523	482,831	73,316	81,447	990	42,275	51,060	498,385	
1,995,652	183,052	492,778	544,822	91,140	98,200	30,611	38,273	32,615	484,161	
1,929,387	349,545	466,048	453,600	20,991	96,970	990	112,135	35,645	393,463	
1,690,090	164,866	467,370	374,433	58,322	32,510	-	2,000	17,635	572,954	
2,011,583	216,696	468,888	286,506	36,210	55,600	89,008	107,541	53,547	697,587	
1,808,741	160,000	516,879	175,515	69,663	88,122	-	40,963	20,240	737,359	
1,805,056	253,849	518,098	84,267	32,000	124,600	89,144	3,509	42,603	656,986	
1,943,737	304,063	536,562	176,808	11,772	55,600	31,482	80,399	51,868	695,183	
2,061,954	191,267	542,230	127,896	14,200	133,895	13,956	41,030	32,954	964,526	

附表十 進 港 貨 物 分 類 (按 月)

單位：公噸

年 (月) 別	礦 產 品						
	總 計	Minerals					
Year and Month		煤	鐵 礦 砂	土、石、砂 礫	硫 磺	粗 鹽	其 他
	Total	Coal & Coke	Iron Ore	Clay, Stone, Sand &	Sulphur	Salt	Others
2001	21,862,645	9,550,636	-	-	-	809,479	-
2002	26,112,303	8,312,020	-	-	-	864,124	111,770
2003	30,726,933	9,186,476	-	25,486	-	1,057,068	46,253
2004	39,039,900	12,172,091	-	162,380	-	1,403,019	139,234
2005	38,666,233	11,994,071	-	164,738	-	1,237,660	156,379
2006	42,147,947	12,490,414	-	447,450	-	1,743,925	100,483
2007	49,496,527	15,240,616	-	578,233	-	1,699,685	72,198
2008	47,403,188	13,185,738	-	437,432	-	2,226,171	27,940
2009	48,291,606	13,340,191	-	352,208	-	1,632,852	21,692
2010	48,091,428	13,740,729	-	329,128	-	1,821,464	27,095
2011	42,862,538	12,922,261	-	260,799	-	1,722,395	17,543
2012	45,235,860	12,978,908	-	300,876	-	1,794,245	23,767
2013	48,924,296	13,991,618	-	142,666	-	1,794,218	27,496
2014	49,722,644	13,567,679	-	99,924	-	1,684,101	27,911
2015	50,572,394	13,558,793	-	52,552	-	1,731,127	28,878
2016	49,736,497	12,524,145	-	-	-	1,829,768	19,797
2017	49,080,573	12,541,556	-	-	-	1,827,372	24,711
2018	50,394,210	12,122,105	-	-	-	1,986,205	23,144
一 月(Jan.)	4,044,336	598,438	-	-	-	224,794	4,413
二 月(Feb.)	3,918,467	1,019,617	-	-	-	232,013	2,767
三 月(Mar.)	4,165,086	1,183,616	-	-	-	153,041	1,103
四 月(Apr.)	3,921,724	1,019,448	-	-	-	76,577	952
五 月(May)	4,578,035	1,260,336	-	-	-	229,228	1,304
六 月(June)	4,707,860	1,173,765	-	-	-	152,800	1,103
七 月(July)	3,750,071	960,288	-	-	-	76,451	2,758
八 月(Aug.)	4,416,162	1,124,917	-	-	-	226,993	1,404
九 月(Sep.)	4,724,154	1,308,450	-	-	-	158,342	2,207
十 月(Oct.)	3,533,055	587,646	-	-	-	74,401	-
十一月(Nov.)	4,369,733	1,094,500	-	-	-	227,660	3,699
十二月(Dec.)	4,265,527	791,084	-	-	-	153,905	1,434

資料來源：麥寮工業區專用港管理股份有限公司

**Table 10. Classification of Imports (by Month)**

Unit : M.T.

非金屬礦物製品 Non-metallic Mineral Products			
汽、柴、燃料油	原油	輕油	其他
Gasoline, Diesel, Fuel Oil	Grude Oil	Naphtha	Others
-	-	-	10,981,472
-	-	-	15,819,147
-	15,442,885	3,445,306	80,629
-	19,786,495	3,441,305	560,565
-	20,439,568	2,469,388	535,310
36,629	22,076,578	3,049,811	604,229
-	23,788,323	5,303,729	602,331
-	23,187,786	6,284,727	458,045
2,909	24,318,216	6,485,165	704,600
-	22,299,715	7,639,160	416,349
66,292	19,454,259	6,140,506	710,131
-	21,773,269	6,391,800	367,489
-	23,247,971	7,074,850	843,505
-	24,024,343	7,296,536	1,071,662
-	24,762,167	7,658,804	814,277
-	24,866,477	6,716,468	1,347,699
-	24,025,722	7,500,819	937,423
-	25,577,956	7,272,525	1,417,143
-	2,196,737	822,101	60,930
-	1,639,685	799,805	55,919
-	1,977,719	557,511	144,142
-	2,158,378	324,656	154,961
-	2,197,164	567,791	138,041
-	2,533,190	520,266	168,508
-	1,887,011	561,942	125,063
-	2,320,082	464,472	93,951
-	2,271,666	661,150	170,728
-	1,851,677	763,865	68,434
-	2,033,046	738,759	106,188
-	2,511,601	490,207	130,278

附表十 進 港 貨 物 分 類 (按 月) (續 完)

單位：公噸

年(月)別 Year and Month	化 學 品 Chemical Products			基 本 金 屬 Basic Metal	
	肥 料 Fertilizer	動 植 物 性 油 脂 Animal & Vegetable Grease	其 他 Others	鋼 鐵 Iron & Steel	廢 鐵 Iron & Steel Scrap
2001	-	-	494,438	-	-
2002	-	-	995,195	-	-
2003	-	-	1,442,304	-	-
2004	-	-	1,232,141	-	-
2005	-	-	1,378,237	-	-
2006	-	-	1,586,764	-	-
2007	-	-	2,142,588	-	-
2008	-	-	1,595,062	-	-
2009	-	-	1,416,932	-	-
2010	-	-	1,804,662	-	-
2011	-	-	1,470,673	-	-
2012	-	-	1,566,478	-	-
2013	-	-	1,789,997	-	-
2014	-	-	1,861,738	-	-
2015	-	-	1,501,093	-	-
2016	-	-	1,835,779	-	-
2017	-	-	1,776,030	-	-
2018	-	-	1,897,192	-	-
一 月(Jan.)	-	-	125,999	-	-
二 月(Feb.)	-	-	157,679	-	-
三 月(Mar.)	-	-	142,692	-	-
四 月(Apr.)	-	-	171,000	-	-
五 月(May)	-	-	184,171	-	-
六 月(June)	-	-	147,274	-	-
七 月(July)	-	-	125,097	-	-
八 月(Aug.)	-	-	173,377	-	-
九 月(Sep.)	-	-	146,200	-	-
十 月(Oct.)	-	-	187,032	-	-
十 一 月(Nov.)	-	-	160,591	-	-
十 二 月(Dec.)	-	-	176,080	-	-

資料來源：麥寮工業區專用港管理股份有限公司

**Table 10. Classification of Imports (by Month)**

Unit : M.T.

基本金屬 Basic Metal	金屬製品 Metal Products			其他什貨 General Merchandise
	其他 Others	機件 Grude Oil	電器機械器材 Electrical Machinery, Apparatus	
-	-	-	-	26,620
-	-	-	10,047	-
-	-	-	-	526
-	1,272	-	-	141,398
-	6,965	408	110	283,399
-	11,252	-	58	354
-	614	-	-	68,210
-	-	-	287	-
-	178	-	1,196	15,467
-	1,132	-	431	11,563
-	736	-	418	96,525
-	492	-	-	38,536
-	270	-	-	11,705
-	459	-	-	88,291
-	-	-	-	464,703
-	1,097	-	-	595,267
-	-	-	330	446,610
-	-	-	-	97,940
-	-	-	-	10,924
-	-	-	-	10,982
-	-	-	-	5,262
-	-	-	-	15,752
-	-	-	-	-
-	-	-	-	10,954
-	-	-	-	11,461
-	-	-	-	10,966
-	-	-	-	5,411
-	-	-	-	-
-	-	-	-	5,290
-	-	-	-	10,938

附表十一 進 港 貨 物 分 類 (按碼頭)

單位：公噸

年 (月)別 Year and Month	總 計 Total	礦 產 品 Minerals					
		煤 Coal & Coke	鐵 礦 砂 Iron Ore	土、石、砂 礫 Clay, Stone, Sand &	硫 磺 Sulphur	粗 鹽 Salt	其 他 Others
2001	21,862,645	9,550,636	-	-	-	809,479	-
2002	26,112,303	8,312,020	-	-	-	864,124	111,770
2003	30,726,933	9,186,476	-	25,486	-	1,057,068	46,253
2004	37,615,228	11,669,042	-	130,652	-	1,267,204	104,405
2005	41,992,805	12,321,245	-	197,997	-	1,317,494	120,406
2006	42,147,947	12,490,414	-	447,450	-	1,743,925	100,483
2007	49,496,527	15,227,086	-	578,233	-	1,699,685	72,198
2008	47,403,186	13,185,738	-	437,432	-	2,226,171	27,942
2009	48,291,606	13,340,191	-	352,208	-	1,632,852	21,692
2010	48,091,429	13,740,729	-	329,128	-	1,821,464	27,096
2011	42,862,538	12,922,261	-	260,799	-	1,722,395	17,543
2012	45,235,863	12,978,907	-	300,876	-	1,794,245	23,767
2013	48,924,299	13,991,618	-	142,666	-	1,794,218	27,496
2014	49,722,644	13,567,679	-	99,924	-	1,684,101	27,911
2015	50,572,395	13,558,793	-	52,552	-	1,731,127	28,878
2016	49,736,494	12,524,145	-	-	-	1,829,768	19,797
2017	49,080,572	12,541,556	-	-	-	1,827,372	24,711
2018	50,394,209	12,122,105	-	-	-	1,986,205	23,146
東1碼頭	21,102	-	-	-	-	-	20,544
東2碼頭	2,138,057	151,852	-	-	-	1,986,205	-
東3碼頭	5,956,353	5,956,353	-	-	-	-	-
東4碼頭	6,013,900	6,013,900	-	-	-	-	-
東5碼頭	2,602	-	-	-	-	-	2,602
東6碼頭	80,929	-	-	-	-	-	-
東7碼頭	476,554	-	-	-	-	-	-
東8碼頭	2,713,559	-	-	-	-	-	-
東9N/S碼頭	414,271	-	-	-	-	-	-
東10N/S碼頭	306,718	-	-	-	-	-	-
北1碼頭	635,200	-	-	-	-	-	-
北2碼頭	513,517	-	-	-	-	-	-
北5碼頭	-	-	-	-	-	-	-
北6碼頭	-	-	-	-	-	-	-
北7碼頭	59,320	-	-	-	-	-	-
西1碼頭	872,334	-	-	-	-	-	-
西2碼頭	9,251,403	-	-	-	-	-	-
西3碼頭	20,938,390	-	-	-	-	-	-

資料來源：葵寮工業區專用港管理股份有限公司



**Table 11. Classification of Imports (by Wharf)**

Unit : M.T.

非金屬礦物製品 Non-metallic Mineral Products			
汽、柴、燃料油	原油	輕油	其他
Gasoline, Diesel, Fuel Oil	Grude Oil	Naphtha	Others
-	-	-	10,981,472
-	-	-	15,819,147
-	15,442,885	3,445,306	80,629
-	19,256,748	3,395,226	559,611
-	23,411,864	2,632,987	490,109
36,629	22,076,578	3,049,811	604,229
-	23,647,080	5,227,816	602,331
-	23,187,783	6,284,726	458,045
2,909	24,318,216	6,485,164	704,600
-	22,299,714	7,639,159	416,349
66,291	19,454,260	6,140,507	710,130
-	21,773,270	6,391,802	367,489
-	23,247,973	7,074,852	843,505
-	24,024,343	7,296,537	1,071,662
-	24,762,166	7,658,803	814,278
-	24,866,478	6,716,467	1,347,696
-	24,025,721	7,500,819	937,424
-	25,577,954	7,272,527	1,417,141
-	-	-	-
-	-	-	-
-	-	-	-
-	-	-	-
-	-	-	-
-	-	-	-
-	-	-	-
-	-	-	-
-	-	376,858	99,696
-	71,389	1,401,676	1,240,494
-	-	-	15,382
-	-	-	-
-	-	-	-
-	-	-	-
-	-	-	-
-	-	-	-
-	-	-	-
-	-	-	-
-	-	810,765	61,569
-	7,715,475	1,535,928	-
-	17,791,090	3,147,300	-

附表十一 進 港 貨 物 分 類 (按碼頭) (續完)

單位：公噸

年 (月)別 Year and Month	化 學 品 Chemical Products			基 本 金 屬 Basic Metal	
	肥 料 Fertilizer	動 植 物 性 油 脂 Animal & Vegetable Grease	其 他 Others	鋼 鐵 Iron & Steel	廢 鐵 Iron & Steel Scrap
2001	-	-	494,438	-	-
2002	-	-	995,195	-	-
2003	-	-	1,442,304	-	-
2004	-	-	1,106,384	-	-
2005	-	-	1,473,730	-	-
2006	-	-	1,586,764	-	-
2007	-	-	2,142,587	-	-
2008	-	-	1,595,062	-	-
2009	-	-	1,416,933	-	-
2010	-	-	1,804,664	-	-
2011	-	-	1,470,673	-	-
2012	-	-	1,566,479	-	-
2013	-	-	1,789,996	-	-
2014	-	-	1,861,739	-	-
2015	-	-	1,501,093	-	-
2016	-	-	1,835,780	-	-
2017	-	-	1,776,029	-	-
2018	-	-	1,897,192	-	-
東1碼頭	-	-	-	-	-
東2碼頭	-	-	-	-	-
東3碼頭	-	-	-	-	-
東4碼頭	-	-	-	-	-
東5碼頭	-	-	-	-	-
東6碼頭	-	-	64,582	-	-
東7碼頭	-	-	-	-	-
東8碼頭	-	-	-	-	-
東9N/S碼頭	-	-	328,534	-	-
東10N/S碼頭	-	-	301,275	-	-
北1碼頭	-	-	635,200	-	-
北2碼頭	-	-	508,281	-	-
北5碼頭	-	-	-	-	-
北6碼頭	-	-	-	-	-
北7碼頭	-	-	59,320	-	-
西1碼頭	-	-	-	-	-
西2碼頭	-	-	-	-	-
西3碼頭	-	-	-	-	-

資料來源：麥寮工業區專用港管理股份有限公司

**Table 11. Classification of Imports (by Wharf)**

Unit : M.T.

基本金屬 Basic Metal		金屬製品 Metal Products			其他什貨
其他 Others	機件 Grude Oil	電器機械器材 Electrical Machinery, Apparatus	其他 Others	其他什貨 General Merchandise	
-	-	-	-	26,620	
-	-	-	10,047	-	
-	-	-	-	526	
-	-	-	-	125,956	
-	-	-	-	26,973	
-	11,252	-	58	354	
-	614	-	-	298,897	
-	-	-	287	-	
-	178	-	1,196	15,467	
-	1,132	-	431	11,563	
-	736	-	418	96,525	
-	492	-	-	38,536	
-	270	-	-	11,705	
-	459	-	-	88,289	
-	-	-	-	464,705	
-	1,097	-	-	595,266	
-	-	-	330	446,610	
-	-	-	-	97,939	
-	-	-	-	558	
-	-	-	-	-	
-	-	-	-	-	
-	-	-	-	-	
-	-	-	-	-	
-	-	-	-	-	
-	-	-	-	16,347	
-	-	-	-	-	
-	-	-	-	-	
-	-	-	-	70,355	
-	-	-	-	5,443	
-	-	-	-	-	
-	-	-	-	5,236	
-	-	-	-	-	
-	-	-	-	-	
-	-	-	-	-	
-	-	-	-	-	
-	-	-	-	-	

附表十二 出 港 貨 物 分 類 (按 月)

年 (月) 別	總 計	礦 產 品 Minerals		
		煤	鐵 礦 砂	土、石、砂 礫
Year and Month	Total	Coal & Coke	Iron Ore	Clay, Stone, Sand & Gravel
2001	4,179,533	-	-	-
2002	7,918,726	-	-	50
2003	10,670,493	-	-	-
2004	12,732,277	-	-	-
2005	16,238,492	-	-	-
2006	17,106,715	-	-	-
2007	20,397,076	-	-	-
2008	21,777,306	-	-	-
2009	22,099,608	-	-	-
2010	19,812,747	-	-	-
2011	17,482,614	-	-	-
2012	19,471,923	-	-	-
2013	21,502,603	-	-	-
2014	22,136,229	-	-	-
2015	22,734,392	-	-	-
2016	22,793,134	-	-	-
2017	22,307,096	-	-	-
2018	23,853,575	-	-	-
一 月(Jan.)	2,400,958	-	-	-
二 月(Feb.)	1,959,032	-	-	-
三 月(Mar.)	1,878,343	-	-	-
四 月(Apr.)	1,896,259	-	-	-
五 月(May)	2,053,751	-	-	-
六 月(June)	1,970,421	-	-	-
七 月(July)	1,747,743	-	-	-
八 月(Aug.)	2,053,813	-	-	-
九 月(Sep.)	1,895,129	-	-	-
十 月(Oct.)	1,862,515	-	-	-
十一月(Nov.)	2,012,408	-	-	-
十二月(Dec.)	2,123,203	-	-	-

資料來源：葵寮工業區專用港管理股份有限公司

**Table 12. Classification of Imports (by Month)**

單位：公噸					Unit : M.T.
礦 產 品 Minerals			非 金 屬 礦 物 製 品 Non-metalic Mineral Products		
硫 磺	粗 鹽	其 他	汽、柴、燃料油	其 他	
Sulphur	Salt	Others	Gasoline, Diesel, Fuel Oil	Others	
-	-	-	1,393,605	647,888	
65,426	-	-	3,987,163	1,267,453	
103,316	-	-	6,785,856	646,945	
188,950	-	-	9,192,127	518,246	
238,759	-	-	11,584,666	713,673	
260,700	-	-	11,773,715	690,876	
295,000	-	-	12,649,199	943,722	
334,460	-	-	12,890,872	1,171,169	
367,100	-	-	13,381,360	1,103,819	
272,305	-	-	10,973,773	1,313,684	
154,150	-	-	9,802,513	1,378,095	
234,700	-	-	11,144,210	1,569,148	
317,850	-	-	11,341,593	1,869,705	
318,250	-	-	10,027,812	1,996,026	
350,500	-	-	10,114,860	2,271,965	
349,235	-	-	10,078,384	2,179,049	
264,673	-	-	9,444,196	2,234,432	
268,989	-	-	10,693,057	2,246,278	
31,000	-	-	1,131,083	211,685	
31,500	-	-	825,952	205,704	
-	-	-	754,989	212,757	
47,000	-	-	855,721	168,141	
15,500	-	-	926,973	209,187	
16,498	-	-	983,881	190,208	
14,999	-	-	824,364	151,297	
32,997	-	-	968,119	185,008	
32,996	-	-	820,830	157,395	
16,496	-	-	662,441	199,410	
16,499	-	-	907,033	195,641	
13,504	-	-	1,031,671	159,845	

附表十二 出 港 貨 物 分 類 (按 月) (續 完)

單位：公噸

年 (月) 別 Year and Month	化 學 品 Chemical Products			基 本 金 屬 Basic Metal	
	肥 料	動 植 物 性 油 脂	其 他	鋼 鐵	廢 鐵
	Fertilizer	Animal & Vegetable Grease	Others	Iron & Steel	Iron & Steel Scrap
2001	-	-	2,128,272	-	-
2002	-	-	2,598,634	-	-
2003	-	-	3,128,210	-	-
2004	-	-	2,809,358	-	-
2005	-	-	3,663,692	-	-
2006	-	2,709	4,329,830	-	-
2007	-	3,226	6,201,806	-	-
2008	-	2,089	7,183,434	-	-
2009	-	155	7,097,754	-	-
2010	-	396	7,158,364	-	-
2011	-	92	6,028,802	-	-
2012	-	-	6,353,201	-	-
2013	-	262	7,336,868	-	-
2014	-	35	7,176,637	-	-
2015	-	-	7,148,852	-	-
2016	-	-	7,148,672	-	-
2017	-	-	7,369,691	-	-
2018	-	-	7,545,656	-	-
一 月(Jan.)	-	-	726,586	-	-
二 月(Feb.)	-	-	630,515	-	-
三 月(Mar.)	-	-	763,668	-	-
四 月(Apr.)	-	-	642,569	-	-
五 月(May)	-	-	620,681	-	-
六 月(June)	-	-	505,948	-	-
七 月(July)	-	-	540,977	-	-
八 月(Aug.)	-	-	575,454	-	-
九 月(Sep.)	-	-	553,821	-	-
十 月(Oct.)	-	-	699,252	-	-
十 一 月(Nov.)	-	-	629,463	-	-
十 二 月(Dec.)	-	-	656,722	-	-

資料來源：葵寮工業區專用港管理股份有限公司

**Table 12. Classification of Imports (by Month)**

Unit : M.T.

基本金屬 Basic Metal	金屬製品 Metal Products			其他什貨 General Merchandise
	其他 Others	機件 Grude Oil	電器機械器材 Electrical Machinery, Apparatus	
9,768	-	-	-	-
-	-	-	-	-
-	-	-	-	6,166
-	5,132	-	-	18,464
-	2,591	-	1,820	33,291
-	374	-	-	48,511
1,002	493	-	-	302,629
-	1,613	-	-	193,669
-	2,064	-	-	147,356
-	196	-	-	94,029
-	-	-	-	118,962
-	1,266	-	-	169,398
-	4,188	-	-	632,137
-	2,384	-	-	2,615,085
-	7,271	-	-	2,840,944
-	3,204	-	-	3,034,590
-	1,002	-	-	2,993,102
8,089	-	-	-	3,091,506
-	-	-	-	300,604
-	-	-	-	265,361
-	-	-	-	146,929
-	-	-	-	182,828
-	-	-	-	281,410
-	-	-	-	273,886
-	-	-	-	216,106
-	-	-	-	292,235
8,089	-	-	-	321,998
-	-	-	-	284,916
-	-	-	-	263,772
-	-	-	-	261,461

附表十三 出 港 貨 物 分 類 (按碼頭)

單位：計費噸

年 (月) 別 Year and Month	礦 產 品 Minerals						非金屬礦物製品 Non-metallic Mineral Products	
	總 計	煤	土、石、砂礫	硫 磺	粗 鹽	其 他	汽、柴、燃料油	其 他
	<b>Total</b>	Coal & Coke	Clay, Stone, Sand & Gravel	Sulphur	Salt	Others	Gasoline, Diesel, Fuel Oil	Others
2001	4,179,533	-	-	-	-	-	1,393,605	647,888
2002	7,918,726	-	50	65,426	-	-	3,987,163	1,267,453
2003	10,670,493	-	-	103,316	-	-	6,785,856	646,945
2004	13,893,900	-	-	172,921	-	-	9,719,518	317,376
2005	16,918,407	-	-	220,731	-	-	12,030,309	504,290
2006	17,106,715	-	-	260,700	-	-	11,773,715	690,876
2007	20,397,078	-	-	295,000	-	-	12,649,200	943,722
2008	21,777,307	-	-	334,460	-	-	12,890,870	1,171,168
2009	22,099,610	-	-	367,100	-	-	13,381,359	1,103,821
2010	19,812,747	-	-	272,305	-	-	10,973,772	1,313,685
2011	17,482,611	-	-	154,150	-	-	9,802,512	1,378,095
2012	19,471,927	-	-	234,700	-	-	11,144,213	1,569,147
2013	21,502,604	-	-	317,850	-	-	11,341,592	1,866,782
2014	22,136,235	-	-	318,250	-	-	10,027,813	1,996,027
2015	22,734,391	-	-	350,500	-	-	10,114,860	2,271,966
2016	22,793,136	-	-	349,235	-	-	10,078,386	2,179,049
2017	22,307,099	-	-	264,673	-	-	9,444,197	2,234,433
2018	23,853,576	-	-	268,990	-	-	10,693,056	2,246,279
東1碼頭	290,122	-	-	268,990	-	-	-	-
東2碼頭	348,600	-	-	-	-	-	-	-
東3碼頭	-	-	-	-	-	-	-	-
東4碼頭	-	-	-	-	-	-	-	-
東5碼頭	678,004	-	-	-	-	-	-	678,004
東6碼頭	2,439,340	-	-	-	-	-	61,843	176,112
東7碼頭	4,611,256	-	-	-	-	-	2,103,019	475,044
東8碼頭	3,143,099	-	-	-	-	-	2,504,396	161,776
東9N/S碼頭	1,349,787	-	-	-	-	-	2,426	398,548
東10N/S碼頭	1,141,916	-	-	-	-	-	-	124,184
北1碼頭	969,699	-	-	-	-	-	-	-
北2碼頭	906,019	-	-	-	-	-	-	69,020
北5碼頭	560,904	-	-	-	-	-	-	163,591
北6碼頭	85,556	-	-	-	-	-	-	-
北7碼頭	526,193	-	-	-	-	-	-	-
西1碼頭	3,750,789	-	-	-	-	-	3,602,181	-
西2碼頭	3,052,292	-	-	-	-	-	2,419,191	-
西3碼頭	-	-	-	-	-	-	-	-

資料來源：麥寮工業區專用港管理股份有限公司



**Table 13. Classification of Imports (by Wharf)**

Unit : Revenue Ton

化學品 Chemical Products			基本金屬 Basic Metal			金屬製品 Metal Products			其他什貨
肥料 Fertilizer	動植物性油脂 Animal & Vegetable Grease	其他 Others	鋼鐵 Iron & Steel	廢鐵 Iron & Steel Scrap	其他 Others	機件 Machinery	電器機械器材 Electrical Machinery, Apparatur	其他	General Merchandise
-	-	2,128,272	-	-	9,768	-	-	-	-
-	-	2,598,634	-	-	-	-	-	-	-
-	-	3,128,210	-	-	-	-	-	-	6,166
-	-	3,662,589	-	-	-	-	-	-	21,496
-	-	4,155,375	-	-	-	-	-	-	7,702
-	2,709	4,329,830	-	-	-	374	-	-	48,511
-	3,225	6,201,806	-	-	1,002	493	-	-	302,630
-	2,089	7,183,436	-	-	-	1,613	-	-	193,671
-	157	7,097,754	-	-	-	2,064	-	-	147,355
-	398	7,158,363	-	-	-	196	-	-	94,028
-	92	6,028,801	-	-	-	-	-	-	118,961
-	-	6,353,203	-	-	-	1,266	-	-	169,398
-	262	7,336,867	-	-	-	4,189	-	-	635,062
-	35	7,176,638	-	-	-	2,384	-	-	2,615,088
-	-	7,148,850	-	-	-	7,272	-	-	2,840,943
-	-	7,148,671	-	-	-	3,204	-	-	3,034,591
-	-	7,369,693	-	-	-	1,002	-	-	2,993,101
-	-	7,545,657	-	-	8,089	-	-	-	3,091,505
-	-	13,043	-	-	8,089	-	-	-	-
-	-	348,600	-	-	-	-	-	-	-
-	-	-	-	-	-	-	-	-	-
-	-	-	-	-	-	-	-	-	-
-	-	2,023,213	-	-	-	-	-	-	178,172
-	-	538,195	-	-	-	-	-	-	1,494,998
-	-	-	-	-	-	-	-	-	476,927
-	-	941,652	-	-	-	-	-	-	7,161
-	-	1,010,732	-	-	-	-	-	-	7,000
-	-	949,113	-	-	-	-	-	-	20,586
-	-	778,202	-	-	-	-	-	-	58,797
-	-	331,158	-	-	-	-	-	-	66,155
-	-	85,556	-	-	-	-	-	-	-
-	-	526,193	-	-	-	-	-	-	-
-	-	-	-	-	-	-	-	-	148,608
-	-	-	-	-	-	-	-	-	633,101
-	-	-	-	-	-	-	-	-	-

## 二、棧埠

### 附表十四 本港裝卸業者營運實績(依公司別)

單位：計費噸						
年(月)別	總計	台塑公司	南亞公司	台化公司	台塑石化	麥寮汽電
Year and Month	Total	Formosa Plastics Corp.	Nan Ya Plastics Corp.	Formosa Chemicals & Fiber Corp.	Formosa Petro Chemical Corp.	Mailiao Power Corp.
2001	26,041,428	1,734,837	361,460	846,347	13,299,008	9,570,802
2002	34,030,979	2,148,008	353,687	1,341,265	21,442,904	8,318,320
2003	41,397,426	2,674,789	512,050	1,276,821	31,976,683	4,264,920
2004	51,509,127	2,878,148	951,710	1,165,175	41,212,559	4,595,606
2005	58,911,212	3,300,788	969,961	1,748,139	47,116,736	4,931,050
2006	60,204,848	4,180,307	1,008,421	1,834,079	47,282,406	5,016,540
2007	68,374,622	4,233,728	1,554,613	2,997,363	53,313,822	5,289,865
2008	69,806,005	4,902,732	1,751,868	2,956,767	55,066,752	4,243,481
2009	70,159,727	4,154,754	1,672,748	2,806,740	55,677,975	5,130,831
2010	68,089,719	4,323,088	1,720,225	3,228,921	52,997,135	4,903,530
2011	60,375,984	3,786,476	1,467,225	2,582,020	46,714,988	4,876,760
2012	64,590,642	3,765,659	1,424,195	2,817,131	50,200,160	5,314,721
2013	70,293,571	3,856,530	1,540,390	3,693,834	55,097,906	4,785,828
2014	71,901,319	3,460,945	1,500,561	3,666,157	57,342,865	4,509,563
2015	73,379,445	3,551,263	1,633,504	3,211,487	57,913,494	5,630,413
2016	72,079,798	3,695,004	1,605,161	3,598,448	57,204,527	4,585,413
2017	71,361,993	4,181,042	1,708,389	3,392,048	55,607,842	5,109,640
2018	74,390,735	4,180,554	1,582,907	3,667,362	59,162,228	4,353,765
一月(Jan.)	7,587,981	568,108	104,895	313,767	5,974,078	475,329
二月(Feb.)	5,711,021	331,126	132,068	291,976	4,664,051	144,278
三月(Mar.)	6,130,280	526,884	160,880	358,526	4,466,326	489,576
四月(Apr.)	5,533,615	213,880	124,550	324,039	4,160,615	575,170
五月(May)	6,875,271	554,930	170,360	272,485	5,530,060	242,398
六月(June)	5,728,165	227,270	127,427	257,652	4,915,696	101,440
七月(July)	6,117,956	118,701	130,976	296,871	4,962,431	507,453
八月(Aug.)	6,611,156	405,826	103,938	276,695	4,931,001	777,705
九月(Sep.)	5,673,886	327,972	158,330	298,371	4,776,630	1,500
十月(Oct.)	6,783,973	336,939	130,152	295,199	5,403,307	482,618
十一月(Nov.)	6,325,380	304,223	119,986	336,697	5,147,465	308,626
十二月(Dec.)	5,312,051	264,695	119,345	345,084	4,230,568	247,672

資料來源：麥寮工業區專用港管理股份有限公司

## 二、Stevedoring & Warehousing

**Table 14. Volume of Cargoes Handled by Stevedoring & Warehousing Companies**

Unit : Revenue Ton								
中塑油品	大連化工	長春樹脂	南中石化	台塑重工	台塑旭纖	台灣醋酸	台塑光電	其他
Simosa Oil Corp. Ltd.	Dairen Chemical Corp.	Chang Chun Plastics Corp.	Nan Chung Petrochemical Corp.	Formosa Heavy Industries Corp.	Formosa Asahi Spandex CO. Ltd	Formosa Bp Chemicals Corp.	Formosa Plasma Display Corp.	Others
-	92,461	-	126,745	8,868	-	-	-	900
71,138	194,893	23,675	137,089	-	-	-	-	-
248,154	247,102	24,360	164,305	6,166	-	-	2,076	-
226,464	253,777	32,091	185,023	5,604	2,231	739	-	-
350,600	253,088	37,055	182,361	7,173	5,313	8,948	-	-
146,043	404,607	39,792	132,759	2,430	3,367	154,097	-	-
138,281	443,190	104,759	149,693	1,820	2,829	144,659	-	-
97,368	391,405	73,683	130,357	1,887	2,423	187,282	-	-
91,057	296,743	75,432	74,193	2,060	2,405	174,789	-	-
162,523	378,265	95,141	98,110	196	2,458	180,127	-	-
178,997	282,496	249,082	54,270	3,592	1,087	178,991	-	-
203,332	289,417	337,218	80,215	3,324	638	154,632	-	-
262,986	245,132	488,945	56,413	4,640	1,360	259,607	-	-
243,764	256,099	560,656	108,949	2,056	447	249,257	-	-
332,560	231,222	464,312	100,389	11,278	-	299,523	-	-
336,041	342,239	417,767	96,543	5,450	-	193,205	-	-
243,191	395,611	446,757	107,678	641	-	169,154	-	-
231,505	356,949	445,017	153,645	8,089	-	248,714	-	-
28,805	42,877	39,334	21,979	-	-	18,809	-	-
21,727	39,972	43,235	19,929	-	-	22,659	-	-
28,442	21,944	39,178	10,970	-	-	27,554	-	-
24,268	34,511	46,939	13,959	-	-	15,684	-	-
19,921	31,849	30,604	10,991	-	-	11,673	-	-
27,070	37,083	23,548	5,976	-	-	5,003	-	-
17,524	27,302	43,746	5,987	-	-	6,965	-	-
8,726	18,435	48,728	8,968	-	-	31,134	-	-
13,229	16,398	34,999	16,957	8,089	-	21,411	-	-
21,199	32,857	42,477	8,977	-	-	30,248	-	-
8,406	30,169	24,615	14,964	-	-	30,229	-	-
12,188	23,552	27,614	13,988	-	-	27,345	-	-

## 附表十五 裝卸貨物噸量

單位：計費噸

年(月)別 Year and Month	裝卸貨物							
	總計 Total	合計 Total	什貨 General Cargoes	管道 Pipe	貨櫃 Containers	散貨 Bulk Cargoes	其他散裝 Others in Bulk	其他 Others
2001	26,041,428	4,178,784	293,580	3,527,883	357,321	-	-	-
2002	34,030,979	7,918,677	224,834	6,774,926	853,491	65,426	-	-
2003	41,397,426	10,670,493	200,319	9,425,168	941,690	-	103,316	-
2004	51,509,126	13,893,898	78,055	12,605,891	1,037,031	-	172,921	-
2005	58,911,212	16,918,407	135,989	15,627,469	934,218	-	220,731	-
2006	60,204,848	17,501,588	172,710	16,172,854	882,627	-	273,397	-
2007	68,374,622	20,373,429	290,359	18,885,774	924,074	-	273,222	-
2008	69,806,005	21,665,723	406,906	20,187,051	624,626	-	447,140	-
2009	70,159,727	21,639,950	440,360	20,017,457	623,627	-	558,506	-
2010	68,089,719	19,843,095	515,846	18,270,920	589,240	-	467,089	-
2011	60,375,984	17,506,100	515,992	16,255,605	339,266	-	395,237	-
2012	64,590,642	19,151,873	373,823	18,042,618	280,487	-	454,945	-
2013	70,293,571	21,078,215	101,910	19,609,639	550,807	-	815,859	-
2014	71,901,319	21,705,929	7,056	20,813,240	129,552	-	756,081	-
2015	73,379,445	22,562,220	26,271	21,517,969	-	-	1,017,980	-
2016	72,079,798	22,759,464	15,399	21,851,918	-	-	892,147	-
2017	71,361,993	22,143,025	3,641	21,293,150	-	-	846,234	-
2018	74,390,735	23,766,132	23,824	22,805,580	-	-	936,728	-
一月(Jan.)	7,587,981	2,362,162	2,727	2,275,573	-	-	83,862	-
二月(Feb.)	5,711,021	1,951,815	-	1,863,721	-	-	88,094	-
三月(Mar.)	6,130,280	1,856,556	-	1,793,328	-	-	63,228	-
四月(Apr.)	5,533,615	1,902,868	-	1,794,206	-	-	108,662	-
五月(May)	6,875,271	2,016,031	-	1,945,981	-	-	70,050	-
六月(June)	5,728,165	2,031,883	-	1,973,657	-	-	58,226	-
七月(July)	6,117,956	1,725,013	-	1,647,825	-	-	77,188	-
八月(Aug.)	6,611,156	2,043,198	5,000	1,937,332	-	-	100,866	-
九月(Sep.)	5,673,886	1,862,051	13,094	1,784,163	-	-	64,794	-
十月(Oct.)	6,783,973	1,904,484	3,003	1,798,499	-	-	102,982	-
十一月(Nov.)	6,325,380	2,006,630	-	1,920,982	-	-	85,648	-
十二月(Dec.)	5,312,051	2,103,441	-	2,070,313	-	-	33,128	-

資料來源：麥寮工業區專用港管理股份有限公司

**Table 15. Volume of Cargoes Handled**

Unit : Revenue Ton

合 計	卸 貨						
	Unloading						
	散貨-工鹽	散貨-燃煤	其他散裝	管 道	什 貨	貨 櫃	其 他
Total	Salt	Coal	Other Cargoes in Bulk	Pipe	General Cargoes	Containers	Others
21,862,644	809,479	9,550,634	71,672	11,404,239	26,620	-	-
26,112,302	864,124	8,312,020	111,771	16,789,864	34,523	-	-
30,726,933	1,057,068	9,186,479	71,739	20,383,154	26,417	2,076	-
37,615,228	1,267,204	11,669,042	235,055	24,299,356	144,571	-	-
41,992,805	1,306,192	12,321,246	329,703	27,983,648	52,016	-	-
42,703,260	1,817,708	12,683,935	405,580	27,746,569	49,468	-	-
48,001,193	1,698,714	14,052,202	458,389	31,755,007	36,881	-	-
48,140,282	2,229,605	13,469,664	443,998	31,991,580	5,435	-	-
48,519,777	1,653,261	13,642,516	338,586	32,861,109	24,305	-	-
48,246,624	1,827,364	13,290,129	365,791	32,734,353	28,987	-	-
42,869,884	1,861,659	12,711,049	306,936	27,964,963	25,277	-	-
45,438,769	1,721,704	13,247,936	339,560	30,105,210	24,359	-	-
49,215,356	1,791,615	14,104,186	128,638	33,163,405	27,512	-	-
50,195,390	1,684,165	13,092,006	122,978	35,267,812	28,429	-	-
50,817,225	1,652,327	14,029,669	-	35,106,397	28,832	-	-
49,320,334	1,830,848	11,933,508	-	35,536,149	19,829	-	-
49,218,968	1,904,496	12,611,344	-	34,679,420	23,708	-	-
50,624,603	1,907,364	12,886,588	-	35,804,324	26,327	-	-
5,225,819	305,768	1,308,568	-	3,607,307	4,176	-	-
3,759,206	147,787	933,495	-	2,672,322	5,602	-	-
4,273,724	308,061	1,066,891	-	2,897,667	1,105	-	-
3,630,747	-	1,033,053	-	2,596,747	947	-	-
4,859,240	305,814	1,286,177	-	3,265,944	1,305	-	-
3,696,282	76,064	432,539	-	3,186,574	1,105	-	-
4,392,943	-	1,669,556	-	2,720,045	3,342	-	-
4,567,958	233,107	1,088,121	-	3,245,322	1,408	-	-
3,811,835	228,691	523,923	-	3,057,013	2,208	-	-
4,879,489	74,405	1,622,401	-	3,182,683	-	-	-
4,318,750	151,523	1,232,997	-	2,930,529	3,701	-	-
3,208,610	76,144	688,867	-	2,442,171	1,428	-	-

附表十六 裝卸貨物效率

年(月)別 Year and Month	合 計 Total		散 貨-工 鹽 Bulk Cargoes		散 貨-燃 煤 Bulk Cargoes		其 他 散 裝 Other Cargoes in Bulk	
	裝量/工時	卸量/工時	裝量/工時	卸量/工時	裝量/工時	卸量/工時	裝量/工時	卸量/工時
	V./H.	V./H.	V./H.	V./H.	V./H.	V./H.	V./H.	V./H.
2001	424	502	-	745	-	1,165	-	256
2002	445	573	-	839	-	1,463	-	255
2003	384	669	-	835	-	1,705	297	421
2004	319	591	-	800	-	1,698	279	223
2005	334	552	-	694	-	1,491	313	224
2006	313	549	-	705	-	1,511	278	216
2007	318	622	-	758	-	1,666	292	406
2008	321	714	-	757	-	1,849	274	423
2009	315	696	-	757	-	1,837	271	412
2010	320	674	-	762	-	1,770	258	371
2011	321	682	-	759	-	1,781	261	411
2012	318	694	-	760	-	1,800	268	396
2013	330	684	-	762	-	1,741	268	392
2014	450	800	-	759	-	1,783	272	383
2015	464	864	-	752	-	1,692	257	-
2016	479	852	-	765	-	1,590	256	-
2017	485	852	-	726	-	1,582	258	-
2018	491	855	-	757	-	1,630	270	-
一 月(Jan.)	458	828	-	751	-	1,620	260	-
二 月(Feb.)	506	833	-	742	-	1,649	261	-
三 月(Mar.)	509	832	-	749	-	1,633	258	-
四 月(Apr.)	502	853	-	-	-	1,610	259	-
五 月(May)	504	837	-	751	-	1,635	259	-
六 月(June)	501	837	-	755	-	1,629	263	-
七 月(July)	511	868	-	-	-	1,639	301	-
八 月(Aug.)	470	837	-	760	-	1,630	279	-
九 月(Sep.)	456	841	-	762	-	1,638	269	-
十月(Oct.)	469	1,012	-	759	-	1,625	280	-
十一月(Nov.)	502	837	-	770	-	1,619	268	-
十二月(Dec.)	505	842	-	768	-	1,638	277	-

資料來源：葵寮工業區專用港管理股份有限公司

**Table 16. Efficiency of Cargoes Handled**

管 道		什 貨		貨 櫃		其 他	
Pipe		General Cargoes		Containers		Others	
裝量/工時	卸量/工時	裝量/工時	卸量/工時	裝量/工時	卸量/工時	裝量/工時	卸量/工時
V./H.	V./H.	V./H.	V./H.	V./H.	V./H.	V./H.	V./H.
693	650	155	170	-	26	-	-
734	673	156	178	-	32	-	-
681	639	174	169	-	32	-	-
782	623	171	127	29	38	-	-
784	624	163	145	35	44	-	-
759	625	162	130	37	46	-	-
741	631	186	152	34	43	-	-
735	614	235	190	35	45	-	-
735	616	222	318	33	44	-	-
746	621	214	240	33	44	-	-
754	635	218	322	33	43	-	-
752	628	218	316	32	44	-	-
772	624	225	325	32	43	-	-
761	622	406	324	33	42	-	-
764	617	342	317	-	-	-	-
764	620	350	315	-	-	-	-
752	618	260	319	-	-	-	-
737	633	390	324	-	-	-	-
735	619	378	320	-	-	-	-
751	618	-	322	-	-	-	-
759	629	-	318	-	-	-	-
745	625	-	325	-	-	-	-
749	638	-	322	-	-	-	-
739	635	-	329	-	-	-	-
720	636	-	330	-	-	-	-
731	629	401	328	-	-	-	-
719	640	381	325	-	-	-	-
729	651	399	-	-	-	-	-
735	639	-	320	-	-	-	-
733	640	-	322	-	-	-	-

附表十七 貨櫃裝卸量

單位：貨櫃：個  
貨物：公噸

年 (月) 別 Year and Month	總計		進 口			
	Grand Total		合 計		20呎	
	櫃 數 No. of Container	TEU	Total		20 Ft.	
			實 櫃 Loaded Container	空 櫃 Empty Container	實 櫃 Loaded Container	空 櫃 Empty Container
2001	17,903	21,440	-	17,903	-	14,366
2002	39,471	47,070	-	39,471	-	31,872
2003	46,649	57,208	396	46,253	1	36,089
2004	48,670	59,576	-	48,670	-	37,764
2005	43,059	54,174	-	43,059	-	31,944
2006	42,729	53,306	-	42,729	-	32,152
2007	46,338	54,336	-	46,338	-	38,340
2008	30,808	36,672	-	30,808	-	24,944
2009	31,749	37,254	-	31,749	-	26,244
2010	29,096	34,848	-	29,096	-	23,344
2011	17,489	20,659	-	17,489	-	14,319
2012	13,923	16,457	-	13,923	-	11,389
2013	27,472	34,704	-	27,472	-	20,240
2014	5,549	7,326	-	5,549	-	3,772
2015	-	-	-	-	-	-
2016	-	-	-	-	-	-
2017	-	-	-	-	-	-
2018	-	-	-	-	-	-
一月(Jan.)	-	-	-	-	-	-
二月(Feb.)	-	-	-	-	-	-
三月(Mar.)	-	-	-	-	-	-
四月(Apr.)	-	-	-	-	-	-
五月(May)	-	-	-	-	-	-
六月(June)	-	-	-	-	-	-
七月(July)	-	-	-	-	-	-
八月(Aug.)	-	-	-	-	-	-
九月(Sep.)	-	-	-	-	-	-
十月(Oct.)	-	-	-	-	-	-
十一月(Nov.)	-	-	-	-	-	-
十二月(Dec.)	-	-	-	-	-	-

資料來源：麥寮工業區專用港管理股份有限公司。



**Table 17. Number of Containers Handled**

Cargo - M.T.

Incoming 貨櫃						貨物噸數	
35 呎 35 Ft.		40 呎 40 Ft.		45 呎 45 Ft.		Cargo	Tonnage
實櫃 Loaded Container	空櫃 Empty Container	實櫃 Loaded Container	空櫃 Empty Container	實櫃 Loaded Container	空櫃 Empty Container		
-	-	-	3,537	-	-	-	-
-	-	-	7,599	-	-	-	-
-	-	395	10,164	-	-	-	2,076
-	-	-	10,906	-	-	-	-
-	-	-	11,115	-	-	-	-
-	-	-	10,577	-	-	-	-
-	-	-	7,998	-	-	-	-
-	-	-	5,864	-	-	-	-
-	-	-	5,505	-	-	-	-
-	-	-	5,752	-	-	-	-
-	-	-	3,170	-	-	-	-
-	-	-	2,534	-	-	-	-
-	-	-	7,232	-	-	-	-
-	-	-	1,777	-	-	-	-
-	-	-	-	-	-	-	-
-	-	-	-	-	-	-	-
-	-	-	-	-	-	-	-
-	-	-	-	-	-	-	-
-	-	-	-	-	-	-	-
-	-	-	-	-	-	-	-
-	-	-	-	-	-	-	-
-	-	-	-	-	-	-	-
-	-	-	-	-	-	-	-
-	-	-	-	-	-	-	-
-	-	-	-	-	-	-	-
-	-	-	-	-	-	-	-
-	-	-	-	-	-	-	-
-	-	-	-	-	-	-	-
-	-	-	-	-	-	-	-
-	-	-	-	-	-	-	-
-	-	-	-	-	-	-	-
-	-	-	-	-	-	-	-
-	-	-	-	-	-	-	-
-	-	-	-	-	-	-	-
-	-	-	-	-	-	-	-
-	-	-	-	-	-	-	-
-	-	-	-	-	-	-	-
-	-	-	-	-	-	-	-
-	-	-	-	-	-	-	-
-	-	-	-	-	-	-	-
-	-	-	-	-	-	-	-
-	-	-	-	-	-	-	-
-	-	-	-	-	-	-	-
-	-	-	-	-	-	-	-
-	-	-	-	-	-	-	-

附表十七 貨櫃裝卸量(續完)

單位：貨櫃：個  
貨物：公噸

年 (月) 別 Year and Month	總計		出 口			
	Grand Total		合 計 Total		20 呎 20 Ft.	
	櫃 數 No. of Container	TEU	實 櫃	空 櫃	實 櫃	空 櫃
			Loaded Container	Empty Container	Loaded Container	Empty Container
2001	18,507	22,386	18,507	-	14,628	-
2002	44,282	52,638	44,282	-	35,926	-
2003	50,593	61,480	50,567	26	39,691	15
2004	52,876	64,790	52,803	73	40,934	28
2005	47,059	59,058	47,059	-	35,060	-
2006	45,430	55,804	45,046	384	34,813	243
2007	47,856	56,000	47,771	85	39,682	30
2008	31,908	38,113	31,855	53	25,662	41
2009	31,860	37,800	31,860	-	25,920	-
2010	30,463	36,761	30,463	-	24,165	-
2011	17,297	20,678	17,297	-	13,916	-
2012	13,958	16,317	13,958	-	11,599	-
2013	28,068	35,546	28,068	-	20,590	-
2014	6,434	8,531	6,434	-	4,337	-
2015	-	-	-	-	-	-
2016	-	-	-	-	-	-
2017	-	-	-	-	-	-
2018	-	-	-	-	-	-
一月(Jan.)	-	-	-	-	-	-
二月(Feb.)	-	-	-	-	-	-
三月(Mar.)	-	-	-	-	-	-
四月(Apr.)	-	-	-	-	-	-
五月(May)	-	-	-	-	-	-
六月(June)	-	-	-	-	-	-
七月(July)	-	-	-	-	-	-
八月(Aug.)	-	-	-	-	-	-
九月(Sep.)	-	-	-	-	-	-
十月(Oct.)	-	-	-	-	-	-
十一月(Nov.)	-	-	-	-	-	-
十二月(Dec.)	-	-	-	-	-	-

資料來源：麥寮工業區專用港管理股份有限公司。

**Table 17. Number of Containers Handled**

						Cargo - M.T.	
貨 櫃						貨物噸數	
Outgoing							
35 呎 35 Ft.		40 呎 40 Ft.		45 呎 45 Ft.			
實 櫃 Loaded Container	空 櫃 Empty Container	實 櫃 Loaded Container	空 櫃 Empty Container	實 櫃 Loaded Container	空 櫃 Empty Container		
-	-	3,879	-	-	-	357,320	
-	-	8,356	-	-	-	853,490	
-	-	10,876	11	-	-	941,690	
-	-	11,869	45	-	-	1,037,031	
-	-	11,999	-	-	-	934,218	
-	-	10,233	141	-	-	882,627	
-	-	8,089	55	-	-	924,074	
-	-	6,193	12	-	-	624,629	
-	-	5,940	-	-	-	623,627	
-	-	6,298	-	-	-	589,239	
-	-	3,381	-	-	-	339,264	
-	-	2,359	-	-	-	280,487	
-	-	7,478	-	-	-	550,806	
-	-	2,097	-	-	-	129,551	
-	-	-	-	-	-	-	
-	-	-	-	-	-	-	
-	-	-	-	-	-	-	
-	-	-	-	-	-	-	
-	-	-	-	-	-	-	
-	-	-	-	-	-	-	
-	-	-	-	-	-	-	
-	-	-	-	-	-	-	
-	-	-	-	-	-	-	
-	-	-	-	-	-	-	
-	-	-	-	-	-	-	
-	-	-	-	-	-	-	
-	-	-	-	-	-	-	
-	-	-	-	-	-	-	
-	-	-	-	-	-	-	
-	-	-	-	-	-	-	
-	-	-	-	-	-	-	

## 附表十八 倉儲業務狀況

單位：公噸

年(月)別	期末倉棧總量 (A) Total Volume of Warehouse at the End of Year	本期進倉量 (B) Receiving	本期進倉量 (C) (不包括存放 貨櫃場部份) Receiving (Excluding Volume of Cargoes Stored in Container Yard	本期出倉量 Delivery	期末進倉量 (D) Remaining
Year and Month	(噸) (Ton)	(噸) (Ton)	(噸) (Ton)	(噸) (Ton)	(噸) (Ton)
2001					
2002					
2003					
2004					
2005					
2006					
2007					
2008					
2009					
2010					
2011					
2012					
2013					
2014					
2015					
2016					
2017					
2018					
一月(Jan.)					
二月(Feb.)					
三月(Mar.)					
四月(Apr.)					
五月(May)					
六月(June)					
七月(July)					
八月(Aug.)					
九月(Sep.)					
十月(Oct.)					
十一月(Nov.)					
十二月(Dec.)					

資料來源：葵寮工業區專用港管理股份有限公司

**Table 18. Volume of Warehousing**

Unit : M.T.

本期延日存倉量( E ) (不包括存放露 置場及貨櫃場部份) Storage ( Including Volume of Cargoes Stored in Open Space)  (噸日) ( Ton - Day )	本期延日存倉量( F ) (不包括存放露 置場及貨櫃場部份) Storage ( Excluding Volume of Cargoes Stored in Open Space)  (噸日) ( Ton - Day )	倉棧平均使用率 E / (Ax當月天數)  %	貨物平均存倉日數 E / (前一期之D+B) Average Cargo Remaining Days Per Ton  (日) ( Day )	貨物裝卸量(不包括 管道、貨櫃裝 卸)(G) Volume of Cargoes Handled(Excludeing Pipe & Container Cargoes)  (噸) ( Ton )	貨物進倉比率 C / G Percentage of Cargoes Stored  %
---	---	----------------------------------	---	---	---

**三、航政監理**  
**附表十九 工業專用港區域海事案件**

單位：艘數

年(月)別 Year and Month	Vessels of Ship - Wreck									
	合計 Total	碰撞	觸礁 或 擱淺	失火	爆炸	洩漏	傾覆	機械 故障	非常 變故	其他
2001										
2002										
2003	2	-	-	-	-	-	-	1	-	1
2004	3	1	-	-	-	1	-	-	1	-
2005	8	6	-	-	-	-	-	-	-	2
2006	3	1	-	-	-	-	-	-	-	2
2007	5	-	1	-	-	-	-	2	-	2
2008	4	3	-	-	-	-	-	-	-	1
2009	7	2	1	-	-	1	-	-	-	3
2010	5	3	-	-	-	-	-	1	-	1
2011	8	4	-	-	-	1	-	1	2	-
2012	-	-	-	-	-	-	-	-	-	-
2013	1	1	-	-	-	-	-	-	-	-
2014	1	-	-	-	-	-	-	-	-	1
2015	5	2	-	-	-	-	-	-	-	3
2016	2	-	-	-	-	-	-	-	-	2
2017	-	-	-	-	-	-	-	-	-	-
2018	1	-	-	-	-	-	-	-	1	-
一月(Jan.)	1	-	-	-	-	-	-	-	1	-
二月(Feb.)	-	-	-	-	-	-	-	-	-	-
三月(Mar.)	-	-	-	-	-	-	-	-	-	-
四月(Apr.)	-	-	-	-	-	-	-	-	-	-
五月(May.)	-	-	-	-	-	-	-	-	-	-
六月(June.)	-	-	-	-	-	-	-	-	-	-
七月(July.)	-	-	-	-	-	-	-	-	-	-
八月(Aug.)	-	-	-	-	-	-	-	-	-	-
九月(Sep.)	-	-	-	-	-	-	-	-	-	-
十月(Oct.)	-	-	-	-	-	-	-	-	-	-
十一月(Nov.)	-	-	-	-	-	-	-	-	-	-
十二月(Dec.)	-	-	-	-	-	-	-	-	-	-

資料來源：麥寮工業區專用港管理股份有限公司

### 三、Supervising and Administering of navigation

#### Table 19. Ship - Wreck

Unit : Vessels

人 員 傷 亡 (人)								船 體 損 害	
Number of Casualties									
船 員 Seamen				旅 客 Casualties				船 損	船 沉
合 計 Total	負 傷	失 蹤 Missing	死 亡 Deae	合 計 Total	負 傷	失 蹤 Missing	死 亡 Deae		
2	-	-	2	-	-	-	-	-	-
1	-	-	1	-	-	-	-	2	-
-	-	-	-	-	-	-	-	4	-
3	3	-	-	-	-	-	-	1	-
-	-	-	-	-	-	-	-	3	-
3	2	1	-	-	-	-	-	2	-
1	-	-	1	-	-	-	-	4	-
-	-	-	-	1	1	-	-	5	-
2	2	-	-	-	-	-	-	4	-
-	-	-	-	-	-	-	-	-	-
-	-	-	-	-	-	-	-	1	-
-	-	-	-	-	-	-	-	1	-
3	1	-	2	-	-	-	-	3	-
-	-	-	-	-	-	-	-	1	-
-	-	-	-	-	-	-	-	-	-
-	-	-	-	-	-	-	-	1	-
-	-	-	-	-	-	-	-	1	-
-	-	-	-	-	-	-	-	-	-
-	-	-	-	-	-	-	-	-	-
-	-	-	-	-	-	-	-	-	-
-	-	-	-	-	-	-	-	-	-
-	-	-	-	-	-	-	-	-	-
-	-	-	-	-	-	-	-	-	-
-	-	-	-	-	-	-	-	-	-
-	-	-	-	-	-	-	-	-	-
-	-	-	-	-	-	-	-	-	-
-	-	-	-	-	-	-	-	-	-
-	-	-	-	-	-	-	-	-	-
-	-	-	-	-	-	-	-	-	-
-	-	-	-	-	-	-	-	-	-
-	-	-	-	-	-	-	-	-	-
-	-	-	-	-	-	-	-	-	-
-	-	-	-	-	-	-	-	-	-

**四、財務**  
**附表二十 營 業 總 收 入**

單位：新台幣元

年 (月) 別	7=5+6	5=1+2+3+4	1
Year and Month	總 計 Grand Total	營 業 收 入 Operating Revenue	港 灣 設 施 使 用 收 入 Facilities Usage Revenue
2001	1,713,532,506	1,503,529,918	678,921,665
2002	2,114,443,106	1,931,886,166	969,599,978
2003	2,480,584,209	2,417,832,652	1,227,143,023
2004	3,062,894,485	2,988,776,216	1,511,159,274
2005	3,356,493,634	3,285,882,302	1,666,146,703
2006	3,430,154,796	3,382,657,949	1,719,710,703
2007	4,209,976,723	3,993,368,414	1,982,687,717
2008	4,044,733,179	3,958,382,250	2,015,268,804
2009	4,141,160,700	3,954,892,930	2,017,722,074
2010	4,102,496,618	4,018,819,093	1,949,872,975
2011	3,666,667,917	3,570,620,369	1,732,244,013
2012	4,109,789,714	3,759,718,826	1,829,916,856
2013	4,801,184,935	4,360,961,096	2,045,579,769
2014	4,426,303,653	4,238,682,031	2,065,932,247
2015	4,378,523,111	4,146,516,023	2,100,720,458
2016	4,267,925,477	4,086,176,651	2,069,144,742
2017	4,242,551,206	4,089,213,341	2,033,036,319
2018	4,390,073,312	4,259,852,946	2,123,558,276
一 月(Jan.)	442,175,709	436,482,387	233,448,903
二 月(Feb.)	348,878,369	343,079,110	161,132,960
三 月(Mar.)	388,842,982	371,230,277	179,168,365
四 月(Apr.)	327,518,495	322,754,132	159,561,656
五 月(May.)	389,028,168	383,393,902	196,441,169
六 月(June.)	382,614,670	361,524,665	178,703,449
七 月(July.)	327,334,327	322,680,933	163,416,490
八 月(Aug.)	377,488,538	371,589,841	191,011,165
九 月(Sep.)	396,938,988	364,023,132	186,801,342
十 月(Oct.)	345,407,037	339,248,834	169,866,855
十一月(Nov.)	373,795,880	370,319,688	180,300,915
十二月(Dec.)	290,050,149	273,526,045	123,705,007

資料來源：麥寮工業區專用港管理股份有限公司



#### 四、Finance

**Table 20. Total Operating Revenue**

Unit : N T \$			
2	3	4	6
港灣業務收入 Port Revenue	棧埠業務收入 Stevedoring & Warehousing Revenue	租金收入 Rent Revenue of Operating Assets	營業外收入 Non - Operating Revenue
129,158,163	695,450,090	-	210,002,588
149,644,590	812,641,598	-	182,556,940
163,040,374	1,027,649,255	-	62,751,557
190,961,727	1,286,655,215	-	74,118,269
210,673,015	1,409,062,584	-	70,611,332
224,626,821	1,438,320,425	-	47,496,847
279,545,337	1,731,135,360	-	216,608,309
269,659,269	1,673,454,177	-	86,350,929
271,211,173	1,665,959,683	-	186,267,770
273,834,416	1,795,111,702	-	83,677,525
262,261,469	1,576,114,887	-	96,047,548
258,964,607	1,670,837,363	-	350,070,888
307,969,369	2,007,411,958	-	440,223,839
300,171,248	1,872,578,536	-	187,621,622
307,514,930	1,738,280,635	-	232,007,088
305,450,052	1,711,581,857	-	181,748,826
310,485,723	1,745,691,299	-	153,337,865
316,027,387	1,820,267,283	-	130,220,366
35,709,133	167,324,351	-	5,693,322
25,335,170	156,610,980	-	5,799,259
27,094,125	164,967,787	-	17,612,705
23,449,177	139,743,299	-	4,764,363
27,434,307	159,518,426	-	5,634,266
27,080,405	155,740,811	-	21,090,005
23,370,698	135,893,745	-	4,653,394
26,587,544	153,991,132	-	5,898,697
26,899,974	150,321,816	-	32,915,856
26,004,730	143,377,249	-	6,158,203
26,984,167	163,034,606	-	3,476,192
20,077,957	129,743,081	-	16,524,104

## 附表二十一 營 業 總 支 出

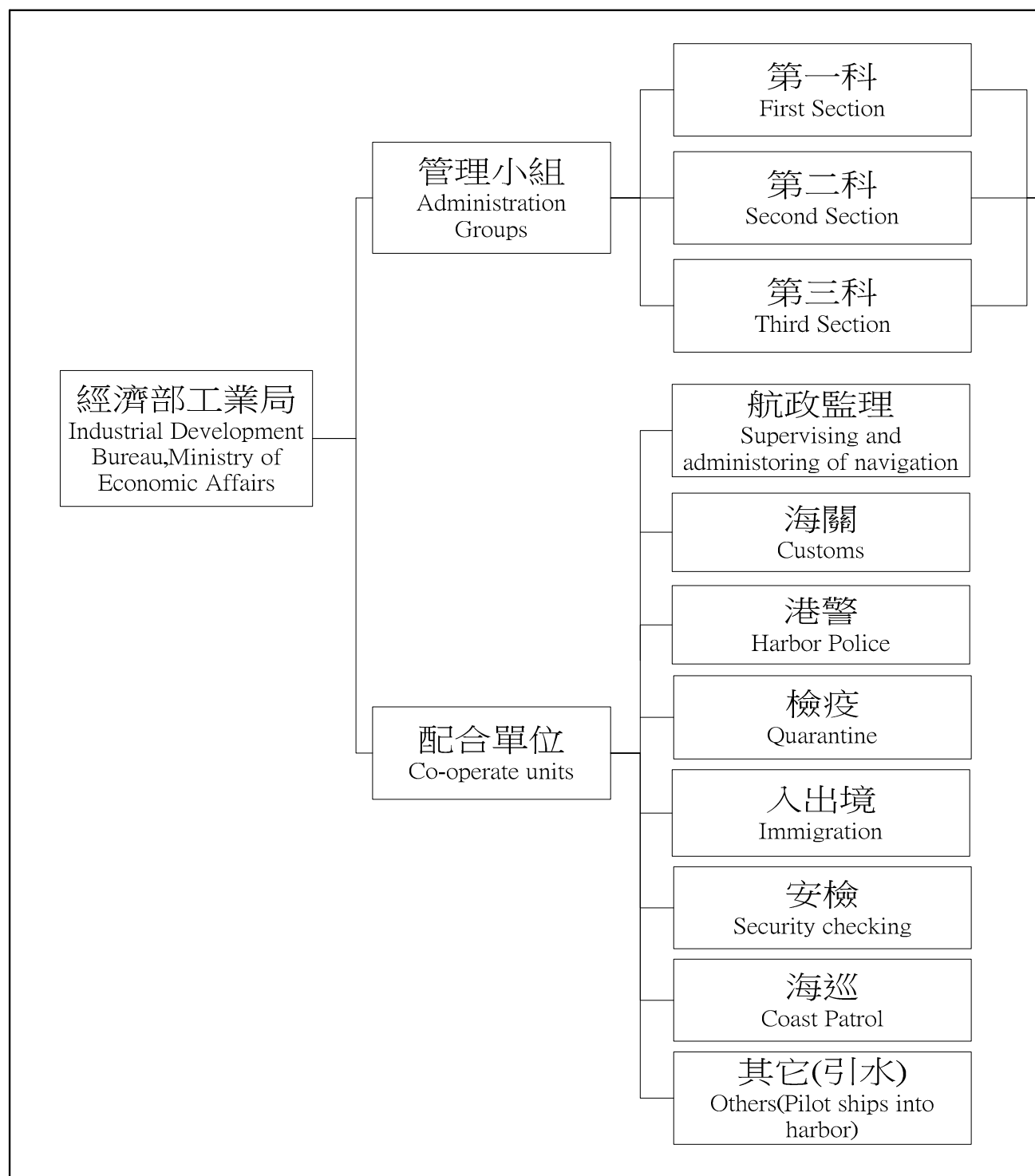
單位：新台幣元

年 (月) 別	17=15+16	15=8+9+10+11+12+13+14	8	9	10
Year and Month	總 計 Grand Total	營 業 支 出 Operating Expense	港 灣 費 用 Port Expense	棧 埠 費 用 Stevedoring & Warehousing Expense	維 持 費 用 Command Expense
2001	1,342,041,944	1,007,047,993	-	633,034,287	-
2002	1,513,072,746	1,253,395,970	-	724,907,262	-
2003	1,776,135,585	1,542,378,958	489,572,751	846,578,123	-
2004	2,057,280,740	1,685,344,858	543,550,653	925,211,062	-
2005	1,828,340,397	1,750,994,466	576,109,936	981,350,944	-
2006	2,401,306,693	2,111,193,224	905,062,669	989,089,755	-
2007	2,550,049,377	2,367,194,764	944,246,643	1,106,659,306	-
2008	2,465,699,176	2,267,819,359	732,746,796	1,200,196,316	-
2009	2,423,886,449	2,372,903,738	912,031,004	1,239,716,920	-
2010	2,512,559,966	2,428,173,744	966,475,610	1,248,012,352	-
2011	2,547,996,901	2,481,267,557	996,579,878	1,272,738,738	-
2012	2,914,175,058	2,864,363,418	1,224,506,903	1,381,281,548	-
2013	2,729,549,234	2,685,362,167	991,543,147	1,450,379,947	-
2014	3,061,981,529	2,900,317,680	1,423,064,706	1,261,589,471	-
2015	2,946,636,553	2,703,484,299	1,244,391,666	1,241,382,620	-
2016	2,919,498,495	2,878,092,618	1,445,436,583	1,199,662,620	-
2017	2,752,674,002	2,721,207,520	1,304,277,115	1,193,404,752	-
2018	2,977,683,356	2,921,897,835	1,545,517,045	1,156,423,229	-
一 月(Jan.)	264,219,571	261,488,421	152,465,383	91,994,938	-
二 月(Feb.)	260,202,477	259,067,873	144,793,935	94,692,583	-
三 月(Mar.)	284,038,686	282,877,654	165,028,631	100,119,998	-
四 月(Apr.)	257,354,511	254,681,525	144,852,724	93,502,641	-
五 月(May.)	294,662,178	254,727,405	144,017,897	93,222,626	-
六 月(June.)	277,745,896	276,582,738	172,200,691	86,373,449	-
七 月(July.)	224,841,381	223,651,858	112,772,545	93,189,582	-
八 月(Aug.)	253,095,887	251,766,530	129,047,116	104,514,869	-
九 月(Sep.)	240,757,428	239,542,203	123,086,622	97,932,310	-
十 月(Oct.)	239,713,976	238,815,838	122,080,713	98,059,867	-
十一月(Nov.)	195,725,409	194,581,506	77,499,976	98,012,909	-
十二月(Dec.)	185,325,956	184,114,284	57,670,812	104,807,457	-

資料來源：麥寮工業區專用港管理股份有限公司

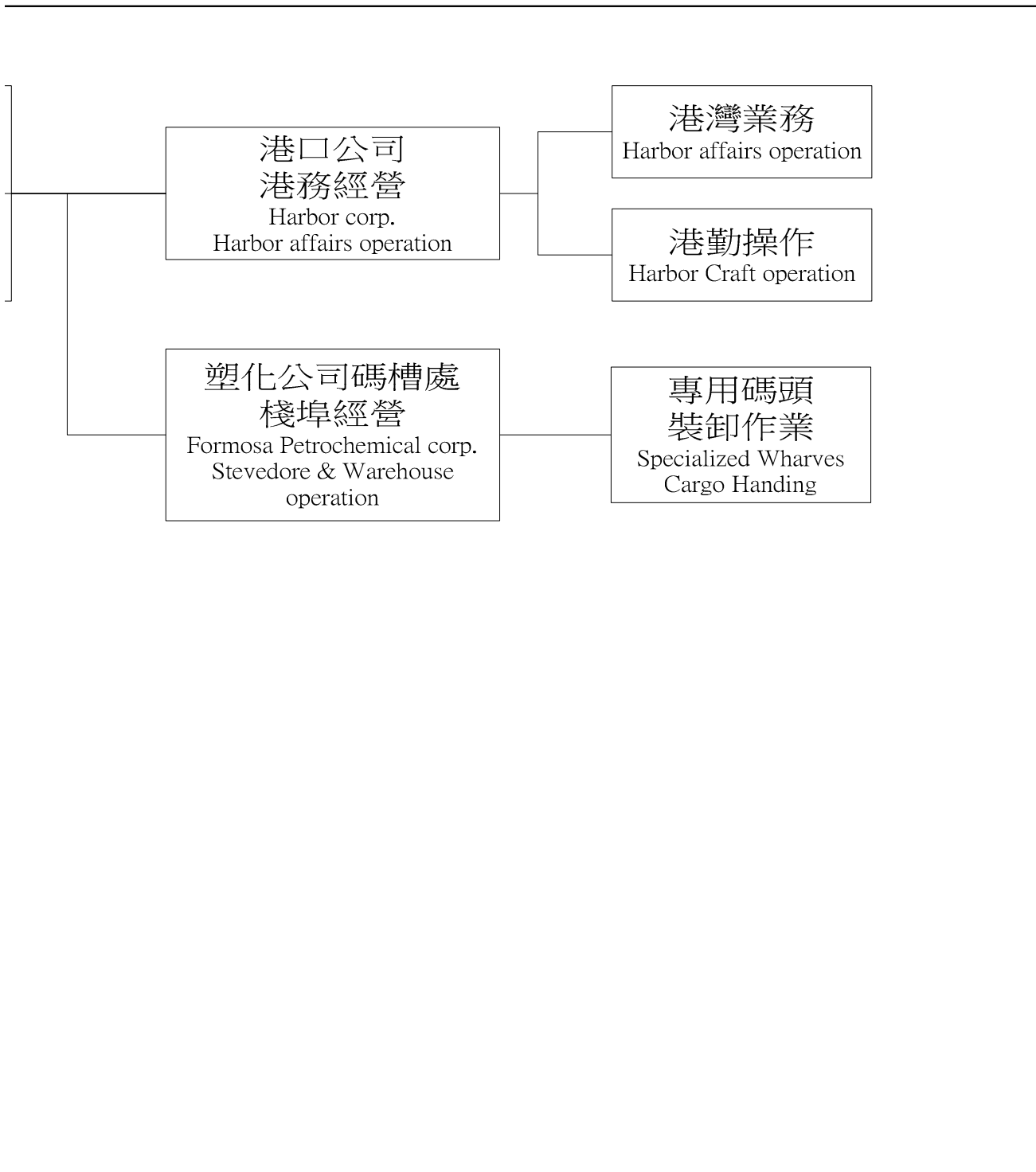
Unit : N T \$					
11	12	13	14	16	18=7-17
其他營業費用 Other Operating Expense	業務費用 Business Expense	管理費用 Administration Expense	土地租金 Rent Expense	營業外支出 Non - Operating Expense	盈餘 Surplus
-	295,506,644	78,507,062	-	334,993,951	371,490,562
-	382,578,274	145,910,434	-	259,676,776	601,370,360
107,508,794	-	98,719,290	-	233,756,627	704,448,624
96,915,734	-	119,667,409	-	371,935,882	1,005,613,745
68,003,627	-	102,325,331	23,204,628	77,345,931	1,528,153,237
61,356,778	20,059,866	112,419,528	23,204,628	290,113,469	1,028,848,103
150,551,995	-	142,532,192	23,204,628	182,854,613	1,659,927,346
146,131,160	-	165,540,459	23,204,628	197,879,817	1,579,034,003
75,257,373	-	122,693,813	23,204,628	50,982,711	1,717,274,251
53,041,412	-	137,439,742	23,204,628	84,386,222	1,589,936,652
48,003,391	-	140,740,922	23,204,628	66,729,344	1,118,671,016
49,479,058	-	185,891,281	23,204,628	49,811,640	1,195,614,656
47,853,475	-	172,380,970	23,204,628	44,187,067	2,071,635,701
29,820,010	-	162,638,865	23,204,628	161,663,849	1,364,322,124
32,296,886	-	162,208,499	23,204,628	243,152,254	1,431,886,558
54,300,391	-	155,488,396	23,204,628	41,405,877	1,348,426,982
28,052,164	-	158,346,257	37,127,232	31,466,482	1,489,877,204
13,819,067	-	169,011,262	37,127,232	55,785,521	1,412,389,956
-	-	13,934,164	3,093,936	2,731,150	177,956,138
1,564,563	-	14,922,856	3,093,936	1,134,604	88,675,892
1,621,456	-	13,013,633	3,093,936	1,161,032	104,804,296
-	-	13,232,224	3,093,936	2,672,986	70,163,984
1,544,274	-	12,848,672	3,093,936	39,934,773	94,365,990
1,540,465	-	13,374,197	3,093,936	1,163,158	104,868,774
1,386,444	-	13,209,351	3,093,936	1,189,523	102,492,946
1,141,568	-	13,969,041	3,093,936	1,329,357	124,392,651
1,154,124	-	14,275,211	3,093,936	1,215,225	156,181,560
1,335,364	-	14,245,958	3,093,936	898,138	105,693,061
1,260,036	-	14,714,649	3,093,936	1,143,903	178,070,471
1,270,773	-	17,271,306	3,093,936	1,211,672	104,724,193

五、組織與人事  
附表二十二 港內各作業組織系統表



## 五、 Organization and Personnel matters

Table 22. Organization Chart



附表二十三 港內作業人數（依組織別）

單位：人

年(底)別 End of Year	總計 Total		麥寮港管理小組 Mailiao Harbor Administration		民營事業 Harbor Operation Company	
	職員	工員	職員	工員	職員	工員
	Staff	Work Men	Staff	Work Men	Staff	Work Men
2001	402	6	4	6	38	-
2002	415	5	3	5	39	-
2003	455	5	2	5	39	-
2004	324	178	4	3	43	-
2005	313	191	10	-	43	-
2006	255	258	10	-	44	-
2007	279	268	9	-	41	-
2008	280	278	8	-	41	-
2009	249	316	8	-	42	-
2010	248	312	7	-	41	-
2011	272	328	7	-	41	-
2012	260	319	7	-	41	-
2013	252	350	7	1	40	-
2014	367	335	7	1	41	-
2015	377	281	6	1	41	-
2016	389	268	7	1	41	-
2017	385	308	7	1	41	-
2018	389	351	7	1	42	-

資料來源：麥寮工業區專用港管理股份有限公司

**Table 23. Number of Staff & Workmen of the Bureau and Branch Offices**

Unit : Person

港灣作業機構 Marine Service Org.		棧埠作業機構 Marine Terminal Org.		船舶機械修造工廠 Ship & Machinery Works	
職員	工員	職員	工員	職員	工員
Staff	Work Men	Staff	Work Men	Staff	Work Men
77	-	283	-	-	-
81	-	292	-	-	-
78	-	336	-	-	-
93	-	184	175	-	-
78	14	182	177	-	-
11	85	190	173	-	-
15	90	214	178	-	-
10	88	221	190	-	-
10	95	189	221	-	-
10	97	190	215	-	-
10	103	214	225	-	-
10	103	202	216	-	-
10	134	195	215	-	-
9	129	310	205	-	-
6	126	324	154	-	-
20	127	321	140	-	-
17	134	320	173	-	-
14	134	326	216	-	-

附表二十四 港內作業人員學歷（依組織別）

單位：人

年(底)別 End of Year	總計 Total		研究所 Graduate School		大學 Collage	
	男	女	男	女	男	女
	Male	Female	Male	Female	Male	Female
2001	397	11	7	-	38	3
2002	408	12	7	-	36	3
2003	446	14	7	-	35	4
2004	470	32	8	-	60	5
2005	466	38	6	1	57	8
2006	473	40	6	1	59	9
2007	501	46	6	1	59	9
2008	517	41	6	1	63	8
2009	525	40	7	2	66	7
2010	523	37	8	1	70	6
2011	563	37	10	-	74	6
2012	551	28	11	-	71	6
2013	577	25	13	-	85	6
2014	681	21	15	1	104	6
2015	639	19	15	1	113	6
2016	637	20	17	2	109	6
2017	666	27	19	2	112	6
2018	708	32	19	2	128	6
管理小組	5	3	2	1	2	2
民營事業	35	7	3	1	10	2
港灣作業機構	143	5	4	-	35	2
棧埠作業機構	525	17	10	-	81	-

資料來源：麥寮工業區專用港管理股份有限公司



**Table 24. Number of Staff by Education**

Unit : Person

專 科 Junior Collage		高 中 職 Senior High School		國 中 Junior High School		國 小 Primary School	
男	女	男	女	男	女	男	女
Male	Female	Male	Female	Male	Female	Male	Female
115	5	192	1	34	1	11	1
120	5	193	2	35	1	17	1
112	5	228	3	45	1	19	1
187	11	115	6	79	4	21	6
191	12	119	5	78	6	15	6
203	13	110	5	83	6	12	6
218	13	120	8	83	6	15	9
233	12	126	9	78	5	11	6
230	11	129	10	82	5	11	5
235	12	128	14	73	2	9	2
254	12	157	14	65	2	3	3
257	7	151	12	60	2	1	1
290	4	127	12	52	2	10	1
356	2	140	10	53	1	13	1
344	2	112	9	43	1	12	-
347	4	117	8	35	-	12	-
369	4	125	14	32	-	9	1
406	7	120	14	27	2	8	1
1	-	-	-	-	-	-	-
18	-	4	4	-	-	-	-
45	2	36	-	15	-	8	1
342	5	80	10	12	2	-	-

附表二十五 港內作業人員年齡（依組織別）

單位：人

年(底)別 End of Year	總計 Total		19歲以下 Age Under		20-24歲 Age		25-29歲 Age		30-34歲 Age		35-39歲 Age	
	男	女	男	女	男	女	男	女	男	女	男	女
	Male	Female	Male	Female	Male	Female	Male	Female	Male	Female	Male	Female
2001	397	11	-	-	38	2	136	8	96	-	66	1
2002	408	12	-	-	26	1	133	8	114	2	69	1
2003	446	14	-	-	41	1	143	9	121	3	73	1
2004	470	32	1	-	6	2	88	12	123	6	83	6
2005	466	38	1	-	6	2	85	12	116	10	76	7
2006	473	40	2	-	5	2	83	10	105	8	83	12
2007	501	46	1	-	4	2	88	11	107	9	92	13
2008	517	41	1	-	6	2	93	10	121	9	94	13
2009	525	40	1	-	4	2	93	9	125	8	93	13
2010	523	37	-	-	4	-	88	2	112	6	98	17
2011	563	37	-	-	13	-	108	2	122	5	96	15
2012	551	28	-	-	13	-	108	2	122	5	98	8
2013	577	25	-	-	13	-	115	4	125	4	106	9
2014	681	21	-	-	13	-	198	2	154	5	104	6
2015	639	19	-	-	6	-	179	1	133	5	99	7
2016	637	20	-	-	8	-	183	2	141	3	100	4
2017	666	27	-	-	18	4	195	3	145	3	103	6
2018	708	32	-	-	26	1	183	2	153	4	100	9
管理小組	5	3	-	-	-	-	-	-	-	1	5	1
民營事業	35	7	-	-	-	-	-	-	2	-	1	1
港灣作業機構	143	5	-	-	1	-	6	-	10	-	13	2
棧埠作業機構	525	17	-	-	25	1	177	2	141	3	81	5

資料來源：麥寮工業區專用港管理股份有限公司

**Table 25. Number of Staff by Age**

Unit : Person

40 - 44 歲 Age		45 - 49 歲 Age		50 - 54 歲 Age		55 - 59 歲 Age		60 - 64 歲 Age		65 歲以上 Age Over	
男	女	男	女	男	女	男	女	男	女	男	女
Male	Female	Male	Female	Male	Female	Male	Female	Male	Female	Male	Female
28	-	18	-	14	-	-	-	1	-	-	-
23	-	21	-	19	-	1	-	2	-	-	-
23	-	23	-	18	-	3	-	1	-	-	-
65	5	48	-	40	-	10	1	6	-	-	-
68	6	48	-	46	-	13	1	7	-	-	-
67	5	54	2	42	-	19	1	13	-	-	-
76	6	53	2	40	-	21	1	17	1	2	1
79	6	49	1	39	-	18	-	17	-	-	-
76	7	49	-	40	-	29	-	15	1	-	-
80	7	56	5	43	-	25	-	16	-	1	-
93	9	53	5	40	1	22	-	15	-	1	-
93	7	55	5	32	1	19	-	7	-	4	-
86	5	63	3	28	-	18	-	20	-	3	-
91	5	56	3	24	-	18	-	18	-	5	-
88	5	64	1	31	-	14	-	21	-	4	-
77	7	58	1	24	2	15	1	28	-	3	-
75	4	56	4	33	1	15	1	20	1	6	-
98	6	60	7	39	1	28	1	17	1	4	-
-	-	-	1	-	-	-	-	-	-	-	-
6	2	15	4	6	-	2	-	3	-	-	-
34	1	20	-	20	-	23	1	12	1	4	-
58	3	25	2	13	1	3	-	2	-	-	-

**六、港埠設施**  
**附表二十六 機具、車、船（依組織別）**

噸量單位：公噸  
總噸位單位：噸

年 (底) 別  End of Year	機									
	貨櫃起重機		跨載機		側跨機		貨櫃裝車機		貨櫃牽引機	
	Container Crane		Straddle Carrier		Lateral Straddle		Container Transfer Unit		Yard Tractor	
	台	噸量	台	噸量	台	噸量	台	噸量	台	噸量
	S.	Tonnage	S.	Tonnage	S.	Tonnage	S.	Tonnage	S.	Tonnage
2001	1	50	-	-	-	-	-	-	-	-
2002	1	50	-	-	-	-	-	-	-	-
2003	2	100	-	-	-	-	-	-	-	-
2004	2	100	-	-	-	-	-	-	-	-
2005	2	100	-	-	-	-	-	-	-	-
2006	2	100	-	-	-	-	-	-	-	-
2007	2	50	-	-	-	-	-	-	-	-
2008	2	50	-	-	-	-	-	-	-	-
2009	2	50	-	-	-	-	-	-	-	-
2010	2	50	-	-	-	-	-	-	-	-
2011	2	50	-	-	-	-	-	-	-	-
2012	2	50	-	-	-	-	-	-	-	-
2013	2	50	-	-	-	-	-	-	-	-
2014	2	50	-	-	-	-	-	-	-	-
2015	2	50	-	-	-	-	-	-	-	-
2016	-	-	-	-	-	-	-	-	-	-
2017	-	-	-	-	-	-	-	-	-	-
2018	-	-	-	-	-	-	-	-	-	-
管理小組	-	-	-	-	-	-	-	-	-	-
民營事業	-	-	-	-	-	-	-	-	-	-
港灣作業機構	-	-	-	-	-	-	-	-	-	-
棧埠作業機構	-	-	-	-	-	-	-	-	-	-

六、Harbor Facilities

Table 26. Mechanical, Vehicular & Marine Equipment

Tonnage Unit : M.T.  
Gross Tonnage : Ton.

具 Mechanical Equipment											
貨櫃吊運機 Container Transtainer		貨櫃車架 Container Chassis		貨櫃側載機 Container Side Loader		空櫃推高機 Empty C. Fork Lift		起重機 Mobile Crane		堆高機 Fork - Lift Truck	
台	噸量	台	噸量	台	噸量	台	噸量	台	噸量	台	噸量
S.	Tonnage	S.	Tonnage	S.	Tonnage	S.	Tonnage	S.	Tonnage	S.	Tonnage
2	40	-	-	-	-	1	8	-	-	1	2.5
2	40	-	-	-	-	1	8	1	40	1	2.5
4	80	-	-	-	-	2	16	1	40	1	2.5
4	80	-	-	-	-	2	16	1	40	6	38
4	80	-	-	-	-	2	16	1	40	14	39
4	80	-	-	-	-	2	16	1	40	14	39
4	80	-	-	-	-	2	16	3	46	15	20
4	80	-	-	-	-	2	16	3	46	15	20
4	80	-	-	-	-	2	16	1	40	15	20
4	80	-	-	-	-	2	16	1	40	14	15
4	80	-	-	-	-	2	16	1	40	14	15
4	80	-	-	-	-	2	16	1	40	14	15
4	80	-	-	-	-	2	16	1	40	14	15
4	80	-	-	-	-	2	16	1	40	14	15
4	80	-	-	-	-	-	-	-	-	14	15
-	-	-	-	-	-	-	-	-	-	14	15
-	-	-	-	-	-	-	-	-	-	17	15
-	-	-	-	-	-	-	-	-	-	16	20
-	-	-	-	-	-	-	-	-	-	-	-
-	-	-	-	-	-	-	-	-	-	1	5
-	-	-	-	-	-	-	-	-	-	-	-
-	-	-	-	-	-	-	-	-	-	15	15

附表二十六 機具、車、船（依組織別）（續完）

噸量單位：公噸  
總噸位單位：噸

年(底)別  End of Year	車輛 Vehicular Equipment									
	拖 車		拖 板		卡車、工程車、 清掃車		挖 泥 船		受 泥 船	
	Towing Tractor		Full Trailer		Truck		Dredger		Mud Boat	
	台 S.	噸量 Tonnage	台 S.	噸量 Tonnage	台 S.	噸量 Tonnage	艘 V.	總噸位 Tonnage	艘 V.	總噸位 Tonnage
2001	-	-	-	-	8	-	-	-	-	-
2002	-	-	-	-	8	-	-	-	-	-
2003	-	-	-	-	14	10	-	-	-	-
2004	13	39	10	35	20	7	-	-	-	-
2005	16	39	10	35	37	22	-	-	-	-
2006	16	39	10	35	29	33	4	5	-	-
2007	16	35	10	35	33	13	4	5	-	-
2008	16	35	10	35	31	11	4	5	-	-
2009	16	35	10	35	34	22	1	1,809	-	-
2010	16	35	10	35	32	15	1	1,809	-	-
2011	16	35	10	35	31	11	1	1,809	-	-
2012	16	35	10	35	31	11	1	1,809	-	-
2013	16	35	10	35	32	13	1	1,809	-	-
2014	16	35	10	35	38	29	-	-	-	-
2015	16	35	10	35	38	29	-	-	-	-
2016	-	-	-	-	37	28	-	-	-	-
2017	-	-	-	-	37	21	-	-	-	-
2018	-	-	-	-	41	19	-	-	-	-
管理小組	-	-	-	-	-	-	-	-	-	-
民營事業	-	-	-	-	-	-	-	-	-	-
港灣作業機構	-	-	-	-	6	15	-	-	-	-
棧埠作業機構	-	-	-	-	35	4	-	-	-	-

**Table 26. Mechanical, Vehicular & Marine Equipment**

Tonnage Unit : M.T.  
Gross Tonnage : Ton.

工 作 船 Marine Equipment											
拖 船		給 水 車		起 重 車		駁 船		交 通 船		什 用 船	
Tug Boat		Water Boat		Tug Boat		Brage		Traffic Boat		Miscellaneous Boat	
艘	總噸位	艘	總噸位	艘	總噸位	艘	總噸位	艘	總噸位	艘	總噸位
V.	Tonnage	V.	Tonnage	V.	Tonnage	V.	Tonnage	V.	Tonnage	V.	Tonnage
7	2,055	-	-	-	-	-	-	1	42	1	17
7	2,055	-	-	-	-	-	-	1	42	1	17
7	2,055	-	-	-	-	-	-	3	112	2	34
7	2,055	-	-	-	-	-	-	4	158	3	106
7	2,055	-	-	-	-	-	-	4	161	4	111
7	2,055	-	-	-	-	-	-	4	161	4	111
7	2,055	-	-	-	-	-	-	4	161	4	111
7	2,055	-	-	-	-	-	-	4	161	4	111
11	3,007	-	-	-	-	-	-	4	159	4	174
11	3,007	-	-	-	-	-	-	4	192	4	174
11	3,007	-	-	-	-	-	-	4	192	4	174
11	3,007	-	-	-	-	-	-	4	192	4	174
11	3,007	-	-	-	-	-	-	4	192	4	160
11	3,007	-	-	-	-	-	-	4	192	3	82
11	3,007	-	-	-	-	-	-	4	192	3	81
11	3,007	-	-	-	-	-	-	4	192	3	81
10	2,961	-	-	-	-	-	-	4	192	4	239
10	2,961	-	-	-	-	-	-	4	192	4	239
-	-	-	-	-	-	-	-	-	-	-	-
10	2,961	-	-	-	-	-	-	1	42	1	78
-	-	-	-	-	-	-	-	3	150	3	161
-	-	-	-	-	-	-	-	-	-	-	-

## 附表二十七 港埠工程

總長度單位：公尺  
有效容量單位：公噸  
繫泊能力單位：總噸  
堆儲量單位：公噸

年 (底) 別 End of Year	專 用 碼 頭 Wharves		倉 棧 Warehouse and Sheds		浮筒 Bouys	
	座 Set	總長度 T.L.	座 Set	總長度 T.L.	座 Set	總長度 T.L.
	2001	17	4,666	-	-	-
2002	17	4,666	-	-	-	-
2003	17	4,666	-	-	-	-
2004	17	4,666	-	-	-	-
2005	17	4,666	-	-	-	-
2006	17	4,666	-	-	-	-
2007	19	5,326	-	-	-	-
2008	19	5,326	-	-	-	-
2009	19	5,326	-	-	-	-
2010	20	5,701	-	-	-	-
2011	20	5,701	-	-	-	-
2012	20	5,701	-	-	-	-
2013	20	5,701	-	-	-	-
2014	20	5,701	-	-	-	-
2015	20	5,701	-	-	-	-
2016	20	5,701	-	-	-	-
2017	20	5,701	-	-	-	-
2018	20	5,701	-	-	-	-

資料來源：麥寮工業區專用港管理股份有限公司



**Table 27. Harbor Construction**

Total Length : M.  
 Storage Capacity : M.T.  
 Berthing Capacity : G.T.  
 Warehouse Unit : MT

堆貨場 Open Storage Yards		過港隧道 Cross Harbor Tunnel		公用碼頭 Public Wharves	
座 Set	總長度 T.L.	座 Set	總長度 T.L.	座 Set	總長度 T.L.
-	-	-	-	-	-
-	-	-	-	-	-
-	-	-	-	-	-
1	81,600	-	-	-	-
2	98,100	-	-	-	-
2	98,100	-	-	-	-
2	98,100	-	-	-	-
2	98,100	-	-	-	-
2	98,100	-	-	-	-
2	98,100	-	-	-	-
2	98,100	-	-	-	-
2	98,100	-	-	-	-
2	98,100	-	-	-	-
2	98,100	-	-	-	-
2	98,100	-	-	-	-
2	98,100	-	-	-	-
-	-	-	-	-	-
-	-	-	-	-	-



主管機關

經濟部工業局

台北市信義路三段 41-3 號

電話：(02)27541255 傳真：(02)27043757



管理單位

經濟部工業局麥寮工業專用港管理小組

雲林縣麥寮鄉中興村工業路 1535 號

電話：(05)6812533 傳真：(05)6812534



經營單位

麥寮工業區專用港管理股份有限公司

雲林縣麥寮鄉中興村台塑工業園區一號之一

電話：(05)6812766 傳真：(05)6812135